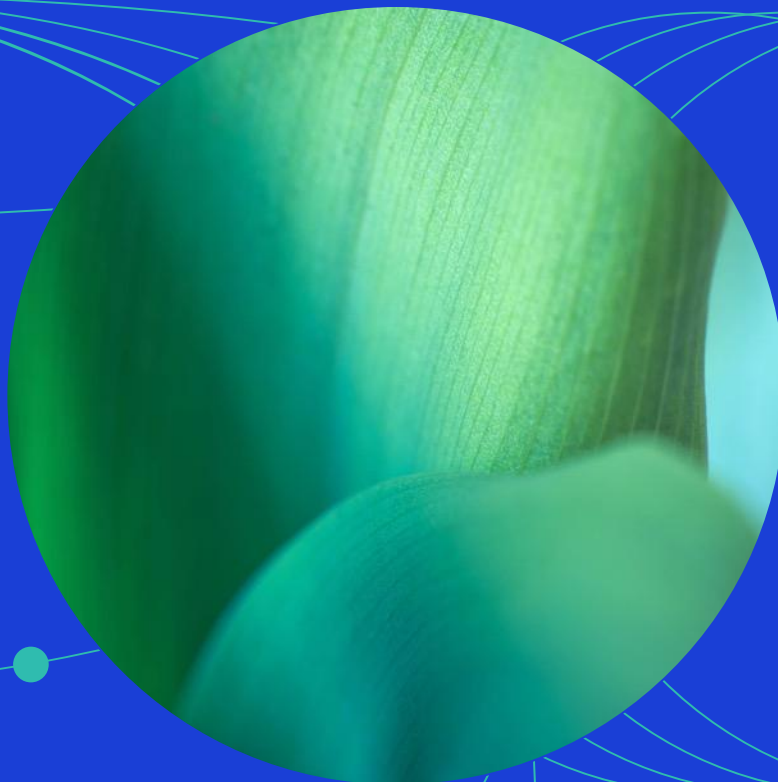




MSCI Sustainable Development Indexes Methodology



Contents

1. Introduction	3
2. Constructing the Indexes	4
2.1 Defining the Parent Index.....	4
2.2 Security Selection.....	4
2.3 Weighting Scheme	6
2.4 Treatment of Unrated Companies.....	6
3. Maintaining the Index.....	7
3.1 Quarterly Index Reviews	7
3.2 Minimum Number of Issuers	7
3.3 Monthly Updates on Basis of Controversies	7
3.4 Ongoing Event Related Changes.....	7
4. MSCI Solutions	9
4.1 MSCI ESG Ratings	9
4.2 MSCI Controversies	9
4.3 MSCI Business Involvement Screening Research.....	9
4.4 MSCI Impact Solutions: Sustainable Impact Metrics	9
Appendix I: Definition of Controversial Activities.....	20
Appendix II: Methodology Set.....	23
Appendix III: Changes to this Document.....	24
Contact Us.....	27
Notice and disclaimer	28

1. Introduction

The MSCI Sustainable Development Indexes (“Indexes”) are designed to identify listed companies whose core business addresses at least one of the world’s social and environmental challenges, as defined by the United Nations Sustainable Development Goals (UN SDGs). The Indexes select companies that contribute to the SDGs through the provision of products and services that can help address some of these challenges and meet minimum ESG standards for their operations¹.

¹ The Indexes are governed by a set of methodology and policy documents (“Methodology Set”), including the present index methodology document. Please refer to Appendix II for more details.

2. Constructing the Indexes

The Indexes use company ratings and research provided by MSCI Solutions LLC (“MSCI Solutions”)² for the Indexes construction.

The Indexes are constructed using the following steps:

- Defining the Parent Index
- Security Selection
- Weighting Scheme

The steps mentioned above are defined in detail in the subsequent sections.

2.1 Defining the Parent Index

The applicable universe includes all the existing constituents from the Parent Index..

The Indexes and their respective Parent Indexes are listed in the table below.

Index Name	Parent Index
MSCI ACWI Sustainable Development Index	MSCI ACWI Index
MSCI World Sustainable Development Index	MSCI World Index

2.2 Security Selection

To be eligible for inclusion in the Indexes, companies must meet all of the below criteria:

2.2.1 Sustainable Impact Sales Percentage

Companies must generate cumulatively at least 50% sales from one or more of the Sustainable Impact Metrics categories as defined by MSCI Sustainable Impact Metrics.

1. Alternative energy
2. Energy efficiency
3. Green building
4. Sustainable water
5. Pollution prevention and control
6. Sustainable Agriculture

² See Section 4 for further information regarding sustainability and climate data used in the Indexes that MSCI Limited and MSCI Deutschland GmbH source from MSCI Solutions LLC (“MSCI Solutions”), a separate subsidiary of MSCI Inc. MSCI Solutions is solely responsible for the creation, determination and management of such data as a provider to MSCI Limited and MSCI Deutschland GmbH. MSCI Limited and MSCI Deutschland GmbH are the benchmark administrators for the MSCI indexes.

7. Nutrition
8. Major disease treatments
9. Sanitation
10. Affordable Real Estate
11. SME Finance
12. Education

2.2.2 Minimum ESG Standards

Companies must maintain all of the following minimum ESG standards:

- **MSCI Controversies:** Companies must not have faced controversies as defined by an MSCI Controversies Score of 0, 1 and 2 respectively
- **MSCI ESG Ratings:** Companies must have an MSCI ESG Rating greater or equal to BB
- **Tobacco:** Companies must not generate more than 10% sales from tobacco production
- **Alcohol:** Companies must not generate more than 10% sales from alcohol production
- **Predatory lending:** Companies must not be involved in predatory lending practices. MSCI Solutions defines involvement in lending practices as those companies that provide products and services associated with certain controversial lending activities and those companies that have been subject of alleged lending controversies
- **Controversial Weapons:** Companies must not be involved in manufacture of Cluster munitions, Landmines, Blinding lasers, White phosphorus, Non-detectible fragments, Depleted uranium and Biological & chemical weapons
- **Nuclear Weapons:** Companies must not be involved in manufacture of nuclear weapons warheads & missiles, Intended use components, Nuclear exclusive delivery platforms and nuclear weapons support services
- **Conventional Weapons:** Companies must not generate more than 5% from conventional weapons and systems
- **Civilian Firearms:** Companies must not be involved in manufacture of semi-automatic civilian firearms or should not generate more than 5% revenue from civilian firearms production

Please refer to Appendix I for details on the above mentioned controversial activities

2.2.3 Minimum Number of Issuers

The Indexes are constructed with a minimum of 30 issuers. All securities from the issuer whose Sustainable Impact Sales Percentage is greater than 50% and meet minimum ESG standards as per 2.2.2 are included in the Indexes.

If the number of issuers selected is less than 30, remaining issuers are selected from those issuers that meet the minimum ESG Standards in decreasing order of Sustainable Impact Sales Percentage. If multiple eligible issuers have the same Sustainable Impact Sales Percentage, then the issuer having a higher weight in the Parent Index is given a higher rank.

2.3 Weighting Scheme

Securities are weighted on the basis of sustainable impact dollar sales, which are adjusted to reflect the ratio of Parent Index market capitalization of security to total market capitalization of issuer as well as the ratio of number of shares of security to total number of shares of issuer. Sustainable impact dollar sales are computed using product of the trailing 12-month sales and the cumulative percentage of sales from the sustainable impact categories.

$$\text{Security Weight} = \left(\text{Sustainable impact sales \%} \times \text{Trailing 12 month sales} \times \frac{\text{Parent Index market capitalization of security}}{\text{Total market capitalization of issuer}} \right) \times \frac{\text{Number of shares of security}}{\text{Total number of shares of issuer}}$$

The above weights are then normalized to 100%.

Additionally, the maximum weight of any sector in the Indexes is capped at 20%, while the maximum weight of any issuer is capped at 4%. After applying both sector and issuer capping, excess weights are distributed among remaining sectors in proportion of their existing sector weights in the Indexes. Within sectors that are allocated excess weights, the weights are distributed among constituents within the sector while meeting the issuer capping requirements.

Notes:

- For Financials companies, where trailing 12-month sales is not available, net interest income would be used to calculate security weight. For companies where net interest income is unavailable, earnings (net income from the continuing operations) would be used.

For more details on the MSCI definition of sales and earnings, please refer to MSCI Fundamental Data methodology at <https://www.msci.com/index-methodology>.

- The security's Parent Index market capitalization is the security free float-adjusted market capitalization times the security Index Inclusion Factor (IIF). An IIF may be applied in the Parent Index to include a security at a fraction of its free float-adjusted market capitalization, for example in the case of multiple step inclusion of securities.
- The issuer's total market capitalization is the sum of the full market capitalization for all the issuer's securities included in the Parent Index.

2.4 Treatment of Unrated Companies

Companies not assessed by MSCI Solutions on data for any of the following MSCI sustainability and climate products are not eligible for inclusion in the Indexes:

- MSCI ESG Ratings
- MSCI Controversies
- MSCI Climate Change Metrics
- MSCI Business Involvement Screening Research (BISR)

3. Maintaining the Indexes

3.1 Quarterly Index Reviews

The Indexes are reviewed on a quarterly basis to coincide with the Index Reviews of the Parent Index. The latest reported Sustainable Impact Sales percentage data would be used for the Index Review. Companies are evaluated for index eligibility as per security section rules defined in section 2.2. Existing constituents are retained in an Index as long as they meet minimum ESG standards and their Sustainable Impact Sales percentage does not fall below 40%. Deletions from the Parent Index at the time of the quarterly Index Reviews are simultaneously reflected in the Indexes.

Sector weights would be capped at 20% and issuer weights would be capped at 4% at each quarterly Index Review.

The pro forma of the Indexes are generally announced nine business days before the effective date.

In general, MSCI uses MSCI Solutions data (including MSCI ESG Ratings, MSCI Controversies, MSCI Business Involvement Screening Research and MSCI Impact Solutions) as of the end of the month preceding the Index Reviews. For some securities, such data may not be published by MSCI Solutions by the end of the month preceding the Index Review. For such securities, MSCI will use ESG data published after the end of month, when available.

3.2 Minimum Number of Issuers

At each quarterly Index Review, the Indexes are constructed with a minimum of 30 issuers.

If the number of issuers selected at a quarterly Index Review as per the index rebalancing rules mentioned in Section 3.1 is less than 30, remaining issuers are selected from those issuers that meet the minimum ESG Standards in decreasing order of Sustainable Impact Sales Percentage. If multiple eligible issuers have the same Sustainable Impact Sales Percentage, then the issuer having a higher weight in the Parent Index is given a higher rank.

3.3 Monthly Updates on Basis of Controversies

Index constituents would be reviewed on a monthly basis for the involvement in controversies. Existing constituents would be deleted if they face controversies as defined by Controversies Score of 0, 1 and 2⁴. The pro forma index is generally announced nine business days before the first business day of the month.

3.4 Ongoing Event Related Changes

The general treatment of corporate events in the Indexes aim to minimize turnover outside of Index Reviews. The methodology aims to appropriately represent an investor’s participation in an event based

⁴ Existing constituents not assessed by MSCI Solutions on MSCI Controversies are not considered for deletion.

on relevant deal terms and pre-event weighting of the index constituents that are involved. Further, changes in index market capitalization that occur as a result of corporate event implementation will be offset by a corresponding change in the Variable Weighting Factor (VWF) of the constituent.

Additionally, if the frequency of Index Reviews in the relevant Parent Index is greater than the frequency of Index Reviews in an Index, the changes made to the Parent Index during intermediate Index Reviews will be neutralized in such Index.

The following section briefly describes the treatment of common corporate events within the Indexes.

No new securities will be added (except where noted below) to the Indexes between Index Reviews. Parent Index deletions will be reflected simultaneously.

Event Type

Event Details

New additions to the Parent Index

A new security added to the Parent Index (such as IPO and other early inclusions) will not be added to the Index.

Spin-Offs

All securities created as a result of the spin-off of an existing Index constituent will not be added to the Index at the time of event implementation. Reevaluation for addition in the Index will occur at the subsequent Index Review.

Merger/Acquisition

For Mergers and Acquisitions, the acquirer’s post event weight will account for the proportionate amount of shares involved in deal consideration, while cash proceeds will be invested across the Index.

If an existing Index constituent is acquired by a non-Index constituent, the existing constituent will be deleted from the Index and the acquiring non-constituent will not be added to the Index.

Changes in Security Characteristics

A security will continue to be an Index constituent if there are changes in characteristics (country, sector, size segment, etc.) Reevaluation for continued inclusion in the Index will occur at the subsequent Index Review.

Further detail and illustration regarding specific treatment of corporate events pertaining to deletions that would be relevant to the Indexes can be found in the MSCI Corporate Events Methodology book under the sections detailing the treatment of events in Capped Weighted and Non-Market Capitalization Weighted indexes.

The MSCI Corporate Events methodology book is available at: <https://www.msci.com/index-methodology>.

4. MSCI Solutions

The Indexes are a product of MSCI Inc. that utilizes information such as company ratings and research produced and provided by MSCI Solutions LLC (“MSCI Solutions”), a subsidiary of MSCI Inc. In particular, the Indexes use the following MSCI sustainability and climate products: MSCI ESG Ratings, MSCI Controversies, and MSCI Business Involvement Screening Research and MSCI Impact Solutions: Sustainable Impact Metrics. MSCI Indexes are administered by MSCI Limited and MSCI Deutschland GmbH.

4.1 MSCI ESG Ratings

MSCI ESG Ratings aim to measure entities’ management of environmental, social and governance risks and opportunities. MSCI ESG Ratings use a weighted average key issue calculation that is normalized by industry to arrive at an industry-adjusted ESG score (0-10), which is then translated to a seven-point scale from ‘AAA’ to ‘CCC’, indicating how an entity manages relevant key issues relative to industry peers.

The MSCI ESG Ratings methodology can be found at:

<https://www.msci.com/legal/sustainability-and-climate-resources-and-disclosures>

4.2 MSCI Controversies

MSCI Controversies provide assessments of controversies concerning the potential negative environmental, social, and/or governance impact of company operations, products and services. The evaluation framework used in MSCI Controversies is designed to be consistent with international norms represented by the UN Declaration of Human Rights, the ILO Declaration on Fundamental Principles and Rights at Work, and the UN Global Compact. MSCI Controversies Score falls on a 0-10 scale, with “0” being the most severe controversy.

The MSCI Controversies methodology can be found at:

<https://www.msci.com/legal/sustainability-and-climate-resources-and-disclosures>

4.3 MSCI Business Involvement Screening Research

MSCI Business Involvement Screening Research (BISR) aims to enable institutional investors to manage environmental, social and governance (ESG) standards and restrictions reliably and efficiently.

The MSCI Business Involvement Screening Research methodology can be found at:

<https://www.msci.com/legal/sustainability-and-climate-resources-and-disclosures>

4.4 MSCI Impact Solutions: Sustainable Impact Metrics

MSCI Impact Solutions’ Sustainable Impact Metrics is designed to identify companies that derive revenue from products or services with positive impact on society and the environment. The Sustainable Impact Metrics are comprised of six Environmental Impact categories and seven Social Impact categories arranged by theme.

MSCI Sustainable Impact Metrics Taxonomy

Pillar	Themes	Categories
Environmental Impact	Climate Change	<ol style="list-style-type: none"> 1. Alternative energy 2. Energy efficiency 3. Green building
	Natural Capital	<ol style="list-style-type: none"> 4. Sustainable water 5. Pollution prevention and control 6. Sustainable agriculture
Social Impact	Basic needs	<ol style="list-style-type: none"> 7. Nutrition 8. Major disease treatments 9. Sanitation 10. Affordable real estate
	Empowerment	<ol style="list-style-type: none"> 11. SME finance 12. Education 13. Connectivity - Digital divide

Under each of the actionable social and environmental impact themes, MSCI Solutions has identified specific categories of products and services that it has determined companies can offer as potential solutions to environmental and social challenges.

For more details on MSCI Sustainable Impact Metrics, please refer to <https://www.msci.com/legal/sustainability-and-climate-resources-and-disclosures>

4.4.1 MSCI Sustainable Impact Metrics Categories

MSCI Solutions identifies companies involved in fossil fuel-related assets and activities including fossil fuel reserves, resource extraction, power generation and generation capacity, revenue from such assets and activities and capital investments in such assets and activities. The metrics are based on disclosed activities, disclosed revenue and estimates of revenue that are extrapolated from company disclosures and eligible third-party sources (such as NGOs).

Alternative Energy

This category includes products and services that support the transmission, distribution and generation of renewable energy and alternative fuels to reduce carbon and pollutant emissions in supporting affordable and clean energy to combat climate change.

Inclusions

- Renewable energy sources include wind, solar, geothermal, biomass, small scale hydro (25 MW), waste-to-energy and wave tidal.
- Alternative energy sources include biodiesel, biogas and cellulosic ethanol.
- Other alternative energy technologies include batteries & energy storage devices for alternative energy and fuel cells.

Examples of and services typically included under the Alternative Energy category

Products	Services
<ul style="list-style-type: none"> • Solar panels • Solar inverters • Wind mills • Wind Towers • Biofuel • Geothermal turbines • Tidal Turbines • Batteries supporting renewable energy 	<ul style="list-style-type: none"> • Electricity generation from geothermal power • Electricity generated from photovoltaic power plants • Construction of biomass plants • Transmission and distribution of renewable energy • Construction of waste incineration plants that generate electricity

Source: MSCI Solutions

Energy Efficiency

This category includes products and services that support the maximization of productivity in labor, transportation, power and domestic applications with minimal energy consumption to ensure universal access to affordable, reliable and modern energy services.

Inclusions

- Products and services that improve business and industrial operations and IT systems include energy-efficient industrial automation and IT optimization services and infrastructure.
- Technologies and systems that increase the efficiency of power usage include demand-side management, smart grid, LED and CFL lighting, insulation, superconductors and batteries & energy storage devices for other sustainable applications.
- Products that focuses on help reduce fuel consumption and improve transport infrastructure include hybrid/electric vehicles, charging stations for hybrid/electric vehicles and improved traffic systems.

Examples of products and services typically included under the Energy Efficiency category

Products	Services
<ul style="list-style-type: none"> • Building automation • LED lightbulbs • Electric and hybrid vehicle units 	<ul style="list-style-type: none"> • LED streetlight installation services • Railway installation and construction • Smart grid services

- | | |
|--|---|
| <ul style="list-style-type: none"> • Batteries for hybrid/electric vehicles • Solar and geothermal powered water heaters • Insulation building materials • Infrastructure as a Service (IaaS) • Platform as a Service (PaaS) | <ul style="list-style-type: none"> • Installation of insulating materials for homes • Telematics services • Provider of electric/hybrid car rental services. |
|--|---|

Source: MSCI Solutions

Green Building

This includes design, construction, redevelopment, retrofitting, or acquisition of green-certified properties to promote mechanisms for raising capacity for effective climate change mitigation and adaptation.

Inclusions

- Ownership of properties, facilities and buildings designed and built according to environmental or sustainable standards and certified by third parties.
- Construction of green or sustainable properties, facilities or buildings, which may also include retrofitting or redevelopment of non-certified properties to comply with green building standards.
- Provision of consultancy services that aid in the green building certification of properties, facilities, or building.

Examples of green building certifications

- | Green building certifications |
|---|
| • LEED (United States) |
| • BREEAM (United Kingdom) |
| • Green Star (Australia) |
| • Green Mark (Singapore) |
| • Energy Star (United States) |
| • Pearl Rating System for Estidama (United Arab Emirates) |
| • MINERGIE (Switzerland) |
| • Building-Housing Energy-Efficiency Labeling System (Japan) |
| • BEAM (Hong Kong) |
| • BEE (India) |
| • BOMA (Canada) |
| • CALENER (Spain) |
| • CASBEE (Japan) |
| • China Tree Star (China) |
| • Development Bank Japan (Japan) |
| • DGNB (Germany) |
| • Green Building Index (Malaysia) |
| • Green Garage Certification (United States) |
| • Green Globe (United States) |
| • Green Globes (Canada) |
| • Green Key (Denmark) |
| • Green Standard (Russia) |
| • Green Star (Australia) |
| • Green Star SA (South Africa) |
| • GRIHA (India) |
| • HQE (France) |

- **Homestar (New Zealand)**
- **IGBC (India)**
- **Living Building Challenge (United States)**
- **NABERS (Australia)**
- **Nordic Ecolabelling (Denmark, Finland, Iceland, Norway, Sweden)**
- **Qualiverde (Brazil)**
- **Superior Energy Performance (United States)**
- **Built Green (United States)**
- **GreenPoint (United States)**
- **Trakhees (United Arab Emirates)**

Source: MSCI Solutions

Sustainable Water

This includes products, services, infrastructure projects and technologies that resolve water scarcity and water quality issues, through minimizing and monitoring current water demand, improving the quality and availability of water supply to improve resource management in both domestic and industrial use.

Inclusions

- Products and projects that aim to address water supply and access include water infrastructure projects and distribution, water recycling technologies and smart metering devices.
- Technologies and services that use alternative water sources include desalination and rainwater harvesting systems.
- Products that improve the water efficiency and drought resiliency of agricultural operations include drought resistant seeds.

Examples of products and services typically included under the Sustainable Water category

Products	Services
<ul style="list-style-type: none"> • Specialized wastewater treatment chemicals • Smart metering devices • Drought resistant seeds • Waste water filters • Desalination equipment 	<ul style="list-style-type: none"> • Desalination services • Maintenance of current water distribution infrastructure • Construction of wastewater plants • Construction of stormwater systems

Source: MSCI Solutions

Pollution Prevention & Control

This category includes products, services, infrastructure projects and technologies that reduces volume of waste materials through recycling, minimizes introduction of toxic substances, and offers remediation of existing contaminants such as heavy metals and organic pollutants in various environmental media to significantly address pollution in all levels and its negative effects.

Inclusions

- Technologies and systems that aim to reduce pollution include conventional pollution control devices.

- Services and infrastructure projects that address the growing waste problem and environmental pollutants include recycling, environmental remediation and waste treatment.
- Sustainable alternative materials for buildings and homes include low toxicity/VOC products.

Examples of products and services typically included under the Pollution Prevention & Control category

Products	Services
<ul style="list-style-type: none"> • Diesel exhaust fluid • Selective catalytic reduction units • Low VOC paints and coating materials • Recycling units 	<ul style="list-style-type: none"> • Remediation services • Recycling services • Hazardous waste treatment • Construction of carbon adsorbers and electrostatic precipitators • Oil spill removal

Source: MSCI Solutions

Sustainable Agriculture

This category currently includes revenues from forest and agricultural products that meet environmental and organic certification requirements to address significantly biodiversity loss, pollution, land disturbance, and water overuse.

Inclusions

Production of agricultural and forestry products using certified sustainable or organic practices.

Examples of Sustainable Agriculture certifications

Sustainable agriculture certifications
<ul style="list-style-type: none"> • Bonsucro • Rountable for Responsible Soy • Better Cotton Initiative • Forest Stewardship Council • Programme for the Endorsement of Forest Certification • Sustainable Forest Initiative • UTZ • Rainforest Alliance • Good Agricultural Practices • Aqua Stewardship Council • United States Department of Agriculture Organic • National Association for Sustainable Agriculture Australia Organic • Australian Forestry Standard • Genesis GAP • Best Aquaculture Practice • Green Licenses • India Organic Certified • Malaysian Good Agricultural Practices

Nutrition

This category has been identified as a category deriving positive impact with the rationale that one of the ways in which companies can play a key role in addressing concerns of basic needs is through the provision of basic nutritious food products.

The aim of this category is to identify the percentage of revenues generated from the manufacture and sale of basic food products. This category includes products classified under the “basic products” category, as defined by Choices International ⁴, a science-based multi-stakeholder organization focused on nutrition.

According to Choices International, basic products refer to those products that contribute to the daily intake of essential nutrients while non basic are not needed to fulfill daily requirements. To qualify as “basic”, food products must also adhere to requirements laid out by Choices International regarding acceptable amounts of added sugars, salt, etc.

In 2019, Choices International provided a more specific guidance to qualifying nutritional content that includes sugar, sodium, and saturated fat content restrictions. These new criteria are now considered in addition to “basic” food definitions in the estimation of revenue for Nutrition category.

Inclusions

Products found within basic product groups contribute significantly to the daily intakes of essential nutrients.

Examples of basic food products typically included under the Nutrition category

Basic food products
<ul style="list-style-type: none"> • Fruits and vegetables • Beans and legumes • Sources of carbohydrates • Meat, fish, poultry, eggs, and meat substitutes • Dairy products • Oils, fats and fat-containing spreads • Nuts • Water • Main meals such as salads, sandwiches, pizza, pasta/ rice/ noodles, etc.

Source: Choices International, MSCI Solutions

Major Disease Treatments

Major Disease Treatments has been identified as a category deriving positive impact with the rationale that one of the ways in which companies can play a key role in addressing concerns of health is through the provision of products used to treat world’s major diseases.

The aim of this category is to identify the percentage of revenues generated from the manufacture and sale of products used to treat the world’s major diseases as defined by the World Health Organization (WHO).

⁴ For more information on Choices International refer to <http://www.choicesprogramme.org/public/criteria/international-product-criteria-2015-def.pdf>

Inclusions

Major diseases include those diseases with the highest daily adjusted life year (DALY)⁵, collectively accounting for approximately 50% of global disease mortality, as well as orphan diseases⁶ and neglected tropical diseases⁷, which are underserved by research and treatment options.

Examples of major diseases

Major diseases	Neglected diseases	Orphan diseases
<ul style="list-style-type: none"> • Ischaemic heart disease • Lower respiratory infections • Stroke • Preterm birth Complications • Diarrheal diseases • Chronic obstructive pulmonary disease • Diabetes mellitus • HIV/AIDS • Tuberculosis • Depressive disorders • Cirrhosis of the liver • Trachea, bronchus, lung cancers • Malaria • Kidney diseases • Neonatal sepsis and infections • Endocrine, blood, immune disorders • Alzheimer disease and other dementias • Asthma • Migraine • Anxiety disorders 	<ul style="list-style-type: none"> • Buruli ulcer • Chagas disease • Dengue and Chikungunya • Dracunculiasis (guinea-worm disease) • Echinococcosis • Foodborne trematodiasis • Human African trypanosomiasis (sleeping sickness) • Leishmaniasis • Leprosy (Hansen's disease) • Lymphatic filariasis • Mycetoma, chromoblastomycosis and other deep mycoses • Onchocerciasis (river blindness) • Rabies • Scabies and other ectoparasites • Schistosomiasis • Soil-transmitted helminthiasis • Snakebite envenoming • Taeniasis/Cysticercosis • Trachoma • Yaws (Endemic treponematoses) 	<ul style="list-style-type: none"> • Gaucher's disease • Pompe disease • Hodgkin's lymphoma • Multiple myeloma • Fabry's disease • Thrombocytopenia purpura • Wilson's disease

⁵ The WHO DALY represents the number of years of life lost due to poor health/disability and earlier death. The sum of these DALYs across the population represents the global burden of disease. More information on DALY can be found here: http://www.who.int/healthinfo/global_burden_disease/metrics_daly/en

⁶ Orphan drugs refer to treatments for orphan diseases which affect about 1 in 1500 people, as defined by the FDA. <http://www.fda.gov/ForIndustry/DevelopingProductsforRareDiseasesConditions/HowtoapplyforOrphanProductDesignation/default.htm>

⁷ More information on neglected diseases can be found here: http://www.who.int/neglected_diseases/diseases/en/

- **Meningitis**
- **Liver cancer**
- **Hepatitis B and C**

Source: WHO, MSCI Solutions

Products for the treatment of the major diseases of the world include drugs used for the treatment of these diseases and healthcare equipment used to help diagnose or treat patients with such diseases.

Examples of healthcare equipment for the treatment of major diseases

- Healthcare equipment**
- **Dialysis machine**
 - **Cardiopulmonary equipment such as heart-lung machine, extracorporeal life support**
 - **Stent**
 - **Blood pressure monitor**
 - **ECG machine**
 - **Insulin pump**

Source: MSCI Solutions

Sanitation

Sanitation has been identified as a category deriving positive impact with the rationale that one of the ways in which companies can play a key role in addressing concerns of basic hygiene and sanitary needs is through the provision of sanitation products.

The aim of this category is to identify the percentage of revenues generated from the manufacture and sale of basic sanitation products.

Inclusion

Personal hygiene products for basic hygienic needs and not simply for beauty/cosmetic applications or luxurious use.

Examples of basic sanitary products typically included under the Sanitation category

- Basic sanitary products**
- **Soaps and shampoos**
 - **Oral care products such as toothbrush, toothpaste and toothpowder**
 - **Sanitary napkins, toilet paper and tissues**
 - **Adult or infant diapers**
 - **Surface cleaners**
 - **Laundry and dishwashing detergent**
 - **Toilets**
 - **Washbasins**
 - **Faucets such as taps, shower heads, etc.**
 - **Insect repellent for home use**
 - **Water purifier**

Affordable Real Estate

As per the United Nations Development Programme, making cities sustainable means creating career and business opportunities, safe and affordable housing, and building resilient societies and economies.

Affordable Real Estate has been identified as a category deriving positive impact with the rationale that one of the ways in which companies can play a key role in addressing concerns of sustainable communities is through the provision of affordably priced real estate.

The aim of this category is to identify the percentage of revenues generated from the lease or sale of affordable commercial and residential real estate properties.

Inclusions

- Affordable residential properties take the form of units devoted to being managed under social rent, homes affordably priced for the low-income segment, and residences for the elderly. It also includes affordable student housing.
- Affordable commercial properties include commercial spaces for Small and Medium Enterprises (SMEs) as these are typically found to be sold/ leased at a lower price point.

SME Finance

SME Finance has been identified as a category deriving positive impact with the rationale that one of the ways in which companies can play a key role in empowering underserved populations is through the provision of loans to small and medium sized enterprises.

The aim of this category is to identify the percentage of revenues generated from providing loans to micro, small and medium-sized enterprises.

Inclusions

Direct lending to micro, small and medium-sized enterprises (MSMEs).

Education

Education has been identified as a category deriving positive impact with the rationale that one of the ways in which companies can play a key role in empowering underserved populations is through the provision of education products and services.

The aim of this category is to identify the percentage of revenues generated from education-related products and services used in a school environment.

Inclusions

Products and services that ensure quality education at all levels.

Examples of products and services typically included under the Education category

Educational products and services
<ul style="list-style-type: none"> • Educational books • Schools and institutes • Professional courses and trainings that entail a certification • Products and services in the domain of kindergarten, primary, secondary, undergraduate or postgraduate education • Provider of tutoring services to students appearing for undergraduate or postgraduate examinations • Provider of tutoring services, study material for non-degree exams such as TOEFL, GMAT, GRE, English language skills or other professional exams such as CFA.

Connectivity

This category currently includes companies that support telecommunication networks development to address the need for bridging digital divide and empowerment of underserved communities through better connectivity to information and communication. This new category currently includes access to internet communication but may be expanded in the future to address other types of infrastructure that enable societal connectivity.

The aim of this category is to identify the percentage of revenues generated from identified products and services that provide or support internet access for people in the Least Developed Countries (LDCs) as defined by the United Nations.

Inclusions

Products and services that help reduce digital divide in LDCs through development of telecommunications infrastructure.

Examples of products and services typically included under the Connectivity category

Connectivity products and services
<ul style="list-style-type: none"> • Internet service providers (ISPs): cable internet, DSL (digital subscriber line), fiber internet, BPL (broadband over power lines), satellite internet access, mobile broadband (3G+), WiMAX, and wireless internet service providers • Telecommunication equipment provided to internet service providers including transceiver stations, transmission lines, multiplexers, digital switches, communication satellites, etc. • Repair services for qualifying infrastructure/ service • Ethernet spine switches

Appendix I: Definition of Controversial Activities

Predatory lending

Predatory lending is defined as the “imposition of unfair and abusive loan terms on borrowers” by engaging in deception, fraud, or manipulation through aggressive sales tactics, and taking unfair advantage of a borrower’s lack of understanding about complicated transactions.

Examples of products and services associated with predatory lending include payday loans, installment loans, pawn loans, title loans, tax refund anticipation loans, doorstep loans, and check cashing.

Defense & Weapons:

The various types of involvement in defense and weapons are defined as below:

Types of Weapon	Definition
Cluster Munitions	Companies with any industry tie to cluster munitions.
Landmine	Companies that have any industry tie to the manufacture of landmines except for Safety, which is a positive indicator.
Blinding Lasers Weapons	Companies that manufacture weapons utilizing laser technology that causes permanent blindness to the target.
Incendiary Weapons	Companies that manufacture incendiary weapons using white phosphorus.
Non-Detectable Fragments	Companies that manufacture weapons that use non-detectable fragments to inflict injury to targets.
Depleted Uranium	Companies involved in the production of depleted uranium (DU) weapons, ammunition, and armor, including companies that manufacture armor piercing, fin stabilized, discarding sabot tracing rounds (APFSDS-T); Kinetic Energy Missiles made with DU penetrators; and DU-enhanced armor, including composite tank armor.
Biological-Chemical Components	Companies that manufacture key biological and chemical weapons components.
Biological-Chemical Systems	Companies that manufacture biological and chemical weapons, including weapons that use pathogens such as viruses, bacteria, and disease-causing biological agents, toxins, or chemical substances that have toxic properties to kill, injure, or incapacitate.

Types of Weapon	Definition
Nuclear Weapons - Warheads & Missiles	Companies that manufacture nuclear warheads and/or whole nuclear missiles. Includes assembly and integration of warhead and missile body. INCLUDES companies with contracts to operate/manage government-owned facilities that manufacture nuclear warheads and missiles.
Nuclear Weapons - Intended-use Components	Companies that manufacture components which were developed or are significantly modified for exclusive use in nuclear weapons (warheads and missiles). INCLUDES companies with contracts to operate/manage government-owned facilities that manufacture components for nuclear warheads and missiles, such as fissile materials, non-nuclear components, explosives, triggers and detonators, etc.
Nuclear Weapons – Exclusive Delivery Platforms	Companies that manufacture or assemble delivery platforms that were developed or significantly modified for the exclusive delivery of nuclear weapons.
Nuclear Weapons – Support Services	Companies that provide auxiliary services related to nuclear weapons, such as repairing and maintaining nuclear weapons, providing overhaul and upgrade services (including engineering), stockpiling and stewardship, R&D work, testing and simulations, etc. INCLUDES companies with contracts to operate/manage government-owned facilities that conduct R&D, testing, simulations, and other essential sciences on nuclear weapons.
Civilian Firearms – Semi – Automatic Producer	<p>Companies that manufacture firearms which automatically eject the cartridge case of a fired shot and load the next cartridge from the magazine allowing the gun user to fire one round of ammunition for every pull of the trigger.</p> <p>The research specifically targets semi-automatic firearms that possess cosmetic, ergonomic, or construction features of an assault rifle. For additional detail on specific features included, please refer to MSCI Solutions' Firearms Screen methodology.</p> <p>The research does not cover companies that cater to the military, government, and law enforcement markets.</p>
Conventional Weapons - Total Involvement	The recent-year percent of revenue, or maximum estimated percent, a company has derived from weapons systems, components, and support systems and services.
Civilian Firearms - Producer	The recent-year percent of revenue, or maximum estimated percent, a company has derived from manufacturing firearms and small arms ammunition for civilian markets.

For more details on controversial activities, please refer to the MSCI Solutions' Business Involvement Screening Research http://www.msci.com/resources/factsheets/MSCI_ESG_BISR.pdf

Appendix II: Methodology Set

The Indexes are governed by a set of methodology and policy documents (“Methodology Set”), including the present index methodology document as mentioned below:

- Description of methodology set – <https://www.msci.com/index/methodology/latest/ReadMe>
- MSCI Corporate Events Methodology – <https://www.msci.com/index/methodology/latest/CE>
- MSCI Fundamental Data Methodology – <https://www.msci.com/index/methodology/latest/FundData>
- MSCI Index Calculation Methodology – <https://www.msci.com/index/methodology/latest/IndexCalc>
- MSCI Index Glossary of Terms – <https://www.msci.com/index/methodology/latest/IndexGlossary>
- MSCI Index Policies – <https://www.msci.com/index/methodology/latest/IndexPolicy>
- MSCI Global Industry Classification Standard (GICS) Methodology – <https://www.msci.com/index/methodology/latest/GICS>
- MSCI Global Investable Market Indexes Methodology – <https://www.msci.com/index/methodology/latest/GIMI>
- ESG Factors In Methodology*

The Methodology Set for each of the Indexes can also be accessed from MSCI’s webpage <https://www.msci.com/index-methodology> in the section ‘Search Methodology by Index Name or Index Code’.

* ‘ESG Factors in Methodology’ contains the list of environmental, social, and governance factors considered, and how they are applied in the methodology (e.g., selection, weighting or exclusion). It can be accessed in the Methodology Set as described above.

Appendix III: Changes to this Document

The following sections have been modified as of May 2016:

Section 2.2: MSCI Controversies

- Changes made to bring alignment with MSCI Sustainable Impact Metrics

Section 2.4: MSCI Sustainable Impact Metrics

- Changes made to bring alignment with MSCI Sustainable Impact Metrics

Section 3.2.1: Sustainable Impact Sales Percentage

- Changes made to bring alignment with MSCI Sustainable Impact Metrics

Section 3.2.2: Minimum ESG Standards

- Changes made to bring alignment with MSCI Sustainable Impact Metrics

Section 3.2.2: Minimum ESG Standards

- Methodology enhancements due to changes in Controversies Score calculation

Appendix II: Definition of Controversial Activities

- Methodology enhancements due to changes in Controversies Score calculation

The following sections have been modified as of August 2016:

Section 4.1: Quarterly Index Reviews

- Same rules are applied for Quarterly and Annual Index Reviews so the Annual Index Review section was removed. The latest reported Sustainable Impact Sales percentage data would be used for all Quarterly Index Reviews
- Buffer rules have been added so that existing constituents continue to remain in the Index unless their Sustainable Impact Sales percentage falls below 40%

The following section has been modified as of June 2017:

The details on the Corporate Events treatment are now included in Section 4.4.

The following section has been modified as of September 2017:

Section 4.1: Quarterly Index Reviews

- Clarification on use of ESG data for securities whose data would be available after the end of the month preceding Index Review

The following section has been modified as of May 2019:

Section 3.3: Weighting Scheme

- Clarification on the calculation of security weights, including the treatment of securities with Index Inclusion Factor (IIF) applied in the Parent Index

The following sections have been modified as of February 2020:

Section 2.4: MSCI Sustainable Impact Metrics

Section 3.2.1: Sustainable Impact Sales Percentage

- Addition of 'Sustainable Agriculture' and 'Connectivity – Digital Divide' as new Sustainable Impact categories

The following section has been modified as of February 2021:

Section 2.4: MSCI Sustainable Impact Metrics

- Removed 'natural gas-powered combined heat and power' from the products and services included in the 'Alternative Energy' category
- Removed the list of exclusions for each category
- Removed section 2.4.2 'Research Process for MSCI Sustainable Impact Metrics'

The following section has been modified as of February 2022:

Section 3.3: Weighting Scheme

- Reworded section 3.3 to clarify the capping process

The following sections have been modified as of June 2023:

Section 3: Maintaining the MSCI ACWI Sustainable Impact Index

- Updated to reflect the transition of the MSCI Global Investable Market Indexes (GIMI) to Quarterly Comprehensive Index Reviews (all references to "Semi-Annual Index Reviews" and "Quarterly Index Reviews" of the MSCI GIMI were replaced with "Index Reviews")

Section 4: MSCI Solutions

- Moved that section after the Section 3 (Maintaining the MSCI ACWI Sustainable Impact Index)
- Updated the descriptions of MSCI sustainability and climate products

Appendix I: Definition of Controversy Severity

- Removed the appendix

The following sections have been modified as of January 2024:

- Section 2.4: Treatment of Unrated Companies
- New section detailing the treatment of companies with ratings and research not available from MSCI Solutions

Section 3.3: Monthly Updates on Basis of Controversies

- Added footnote on companies not assessed on MSCI Controversies

Appendix II: Methodology Set

- Added details on the Methodology Set for the Index.

The following section has been modified as of August 2024

Section 2.4: Treatment of Unrated Companies

- Added treatment of companies when business involvement screening research not available from MSCI Solutions

The following section has been modified as of February 2025

- The methodology name and index name were updated. As of February 3rd, 2025; MSCI ACWI Sustainable Impact Index will be renamed to MSCI ACWI Sustainable Development Index.

The following section has been modified as of March 2026

- The methodology book has been updated to reflect the incorporation of the MSCI World Sustainable Development Index.

Contact Us

About MSCI

MSCI is a leading provider of critical decision support tools and services for the global investment community. With over 50 years of expertise in research, data and technology, we power better investment decisions by enabling clients to understand and analyze key drivers of risk and return and confidently build more effective portfolios. We create industry-leading research-enhanced solutions that clients use to gain insight into and improve transparency across the investment process.

To learn more, please visit www.msci.com.
msci.com/contact-us

The process for submitting a formal index complaint can be found on the index regulation page of MSCI's website at: <https://www.msci.com/index-regulation>.

AMERICA

United States	+ 1 888 588 4567 *
Canada	+ 1 416 687 6270
Brazil	+ 55 11 4040 7830
Mexico	+ 52 81 1253 4020

EUROPE, MIDDLE EAST & AFRICA

South Africa	+ 27 21 673 0103
Germany	+ 49 69 133 859 00
Switzerland	+ 41 22 817 9777
United Kingdom	+ 44 20 7618 2222
Italy	+ 39 02 5849 0415
France	+ 33 17 6769 810

EUROPE, MIDDLE EAST & AFRICA

China	+ 86 21 61326611
Hong Kong	+ 852 2844 9333
India	+ 91 22 6784 9160
Malaysia	1800818185 *
South Korea	+ 82 70 4769 4231
Singapore	+ 65 67011177
Australia	+ 612 9033 9333
Taiwan	008 0112 7513 *
Thailand	0018 0015 6207 7181 *
Japan	+ 81 3 4579 0333

* toll-free

Notice and disclaimer

The data, data feeds, databases, reports, text, graphs, charts, images, videos, recordings, models, metrics, analytics, indexes, ratings, scores, cases, estimates, assessments, software, websites, products, services and other information and materials contained herein or delivered in connection with this notice (collectively, the "Information") are copyrighted, trade secrets (when not publicly available), trademarks and proprietary property of MSCI Inc. or its subsidiaries (collectively, "MSCI"), MSCI's licensors, direct or indirect suppliers and authorized sources, and/or any third party contributing to the Information (collectively, with MSCI, the "Information Providers"). All rights in the Information are reserved by MSCI and its Information Providers and user(s) shall not, nor assist others to, challenge or assert any rights in the Information.

Unless you contact MSCI and receive its prior written permission, you must NOT use the Information, directly or indirectly, in whole or in part (i) for commercial purposes, (ii) in a manner that competes with MSCI or impacts its ability to commercialize the Information or its services, (iii) to provide a service to a third party, (iv) to permit a third party to directly or indirectly access, use or resell the Information, (v) to redistribute or resell the Information in any form, (vi) to include the Information in any materials for public dissemination such as fund factsheets, market presentations, prospectuses, and investor information documents (e.g. KIIDs or KIDs), (vii) to create or as a component of any financial products, whether listed or traded over the counter or on a private placement basis or otherwise, (viii) to create any indexes, ratings or other data products, including in derivative works combined with other indexes or data or as a policy, product or performance benchmarks for active, passive or other financial products, (ix) to populate a database, or (x) to train, use as an input to, or otherwise in connection with any artificial intelligence, machine learning, large language models or similar technologies except as licensed and expressly authorized under MSCI's AI Contracting Supplement at <https://www.msci.com/legal/supplemental-terms-for-client-use-of-artificial-intelligence>.

The intellectual property rights of MSCI and its Information Providers may not be misappropriated or used in a competitive manner through the use of third-party data or financial products linked to the Information, including by using an MSCI index-linked future or option in a competing third-party index to provide an exposure to the underlying MSCI index or by using an MSCI index-linked ETF to create a financial product that provides an exposure to the underlying MSCI index without obtaining a license from MSCI.

The user or recipient of the Information assumes the entire risk of any use it may make, permit or cause to be made of the Information. NONE OF THE INFORMATION PROVIDERS MAKES ANY EXPRESS OR IMPLIED WARRANTIES OR REPRESENTATIONS WITH RESPECT TO THE INFORMATION (OR THE RESULTS TO BE OBTAINED BY THE USE THEREOF), AND TO THE MAXIMUM EXTENT PERMITTED BY APPLICABLE LAW, EACH INFORMATION PROVIDER EXPRESSLY DISCLAIMS ALL IMPLIED WARRANTIES (INCLUDING ANY IMPLIED WARRANTIES OF ORIGINALITY, ACCURACY, TIMELINESS, SUITABILITY, NON-INFRINGEMENT, COMPLETENESS, MERCHANTABILITY AND FITNESS FOR A PARTICULAR PURPOSE) WITH RESPECT TO ANY OF THE INFORMATION. Without limiting any of the foregoing and to the maximum extent permitted by applicable law, in no event shall MSCI or any other Information Provider have any liability arising out of or relating to any of the Information, including for any direct, indirect, special, punitive, consequential (including lost profits) or any other damages, even if notified of the possibility of such damages. The foregoing shall not exclude or limit any liability that may not by applicable law be excluded or limited.

The Information, including index construction, ratings, historical data, or analysis, is not a prediction or guarantee of future performance, and must not be relied upon as such. Past performance is not indicative of future results. The Information may contain back tested data. Back-tested performance based on back-tested data is not actual performance but is hypothetical. There are frequently material differences between back tested performance results and actual results subsequently achieved by any investment strategy. The Information may include "Signals," defined as quantitative attributes or the product of methods or formulas that describe or are derived from calculations using historical data. Signals are inherently backward-looking because of their use of historical data, and they are inherently inaccurate, not intended to predict the future and must not be relied upon as such. The relevance, correlations and accuracy of Signals frequently change materially over time.

The Information may include data relating to indicative prices, evaluated pricing or other information based on estimates or evaluations (collectively, "Evaluations") that are not current and do not reflect real-time traded prices. No evaluation method, including those used by the Information Providers, may consistently generate evaluations or estimates that correspond to actual "traded" prices of any relevant securities or other assets. Evaluations are subject to change at any time without notice and without any duty to update or inform you, may not reflect prices at which actual transactions or collateral calls may occur or have occurred. The market price of securities, financial instruments, and other assets can be determined only if and when executed in the market. There may be no, or may not have been any, secondary trading market for the relevant securities, financial instruments or other assets. Private capital, equity, credit and other assets and their prices may be assessed infrequently, may not be priced on a secondary market, and shall not be relied upon as an explicit or implicit valuation of a particular instrument. Any reliance on fair value estimates and non-market inputs introduces potential biases and subjectivity. Internal Rate of Return metrics are not fully representative without full disclosure of fund cash flows, assumptions, and time horizons.

The Information does not constitute, and must not be relied upon as, investment advice, credit ratings, or proxy advisory or voting services. None of the Information Providers, their products or services, are fiduciaries or make any recommendation, endorsement, or approval of any investment decision or asset allocation. Likewise, the Information does not represent an offer to sell, a solicitation to buy, or an endorsement of any security, financial product, instrument, investment vehicle, or trading strategy, whether or not linked to or in any way based on any MSCI index, rating, subcomponent, or other Information (collectively, "Linked Investments"). The Information should not be relied on and is not a substitute for the skill, judgment and experience of any user when making investment and other business decisions. MSCI is not responsible for any user's compliance with applicable laws and regulations. All Information is impersonal, not tailored to the needs of any person, entity or group of persons, not objectively verifiable in every respect, and may not be based on information that is important to any user.

It is not possible to invest in an index. Exposure to an asset class or trading strategy or other category represented by an index is only available through third party investable instruments (if any) based on that index. MSCI makes no assurance that any Linked Investments will accurately track index performance or provide positive investment returns. Index returns do not represent results of actual trading of investible assets/securities. MSCI maintains and calculates indexes but does not manage assets. The calculation of indexes and index returns may deviate from the stated methodology. Index returns do not reflect payment of any sales charges or fees an investor may pay to purchase securities underlying the index or Linked Investments. The imposition of these fees and charges would cause the performance of a Linked Investment to be different than the MSCI index performance.

Information provided by MSCI Solutions LLC and certain related entities ("MSCI Solutions"), including materials utilized in MSCI sustainability and climate products, have not been submitted to, nor received approval from any regulatory body. MSCI sustainability and climate offerings, research and data are produced by, and ratings are solely the opinion of MSCI Solutions. Other MSCI products and services may utilize information from MSCI Solutions, Barra LLC or other affiliates. More information can be found in the relevant methodologies on www.msci.com. MSCI Indexes are administered by MSCI Limited (UK) and MSCI Deutschland GmbH. No regulated use of any MSCI private real assets indexes in any jurisdiction is permitted without MSCI's express written authorization. The process for applying for MSCI's express written authorization can be found at: <https://www.msci.com/index-regulation>.

MSCI receives compensation in connection with licensing its indexes and other Information to third parties. MSCI Inc.'s revenue includes fees based on assets in Linked Investments. Information can be found in MSCI Inc.'s company filings on the Investor Relations section of msci.com. Issuers mentioned in MSCI Solutions materials or their affiliates may purchase research or other products or services from one or more MSCI affiliates, manage financial products such as mutual funds or ETFs rated by MSCI Solutions or its affiliates or are based on MSCI Indexes. Constituents of MSCI equity indexes are listed companies, which are included in or excluded from the indexes according to the application of the relevant index methodologies. Constituents of MSCI Inc. equity indexes may include MSCI Inc., clients of MSCI or suppliers to MSCI. MSCI Solutions has taken steps to mitigate potential conflicts of interest and safeguard the integrity and independence of its research and ratings.

MIFID2/MIFIR notice: MSCI Solutions does not distribute or act as an intermediary for financial instruments or structured deposits, nor does it deal on its own account, provide execution services for others or manage client accounts. No MSCI product or service supports, promotes or is intended to support or promote any such activity. MSCI Solutions is an independent provider of sustainability and climate data. All use of indicative prices for carbon credits must comply with any rules specified by MSCI. All transactions in carbon credits must be traded "over-the-counter" (i.e. not on a regulated market, trading venue or platform that performs a similar function to a trading venue) and result in physical delivery of the carbon credits.

You may not remove, alter, or obscure any attribution to MSCI or notices or disclaimers that apply to the Information. MSCI, Barra, RiskMetrics, and other MSCI brands and product names are the trademarks, service marks, or registered trademarks of MSCI or its subsidiaries in the United States and other jurisdictions. The Global Industry Classification Standard (GICS) was developed by and is the exclusive property of MSCI and S&P Dow Jones Indices. "Global Industry Classification Standard (GICS)" is a service mark of MSCI and S&P Dow Jones Indices. Terms such as including, includes, for example, such as and similar terms used herein are without limitation.

MSCI and its Information Providers may use automated technologies and artificial intelligence to help generate content and output incorporated in the Information.

Privacy notice: For information about how MSCI collects and uses personal data, please refer to our Privacy Notice at: <https://www.msci.com/privacy-pledge>. For copyright infringement claims contact us at dmca@msci.com. This notice is governed by the laws of the State of New York without regard to conflict of laws principles.