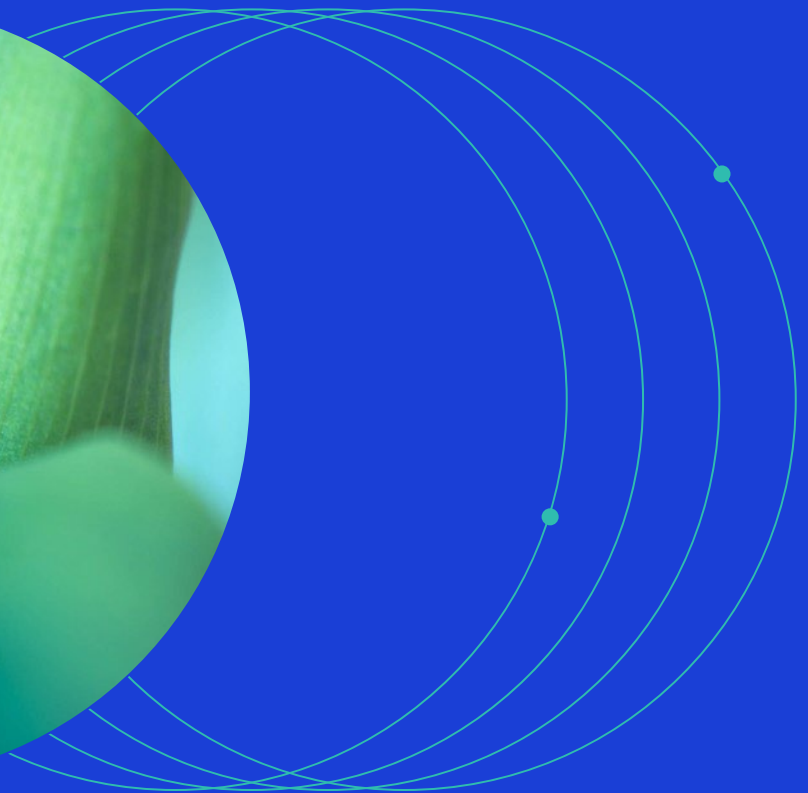
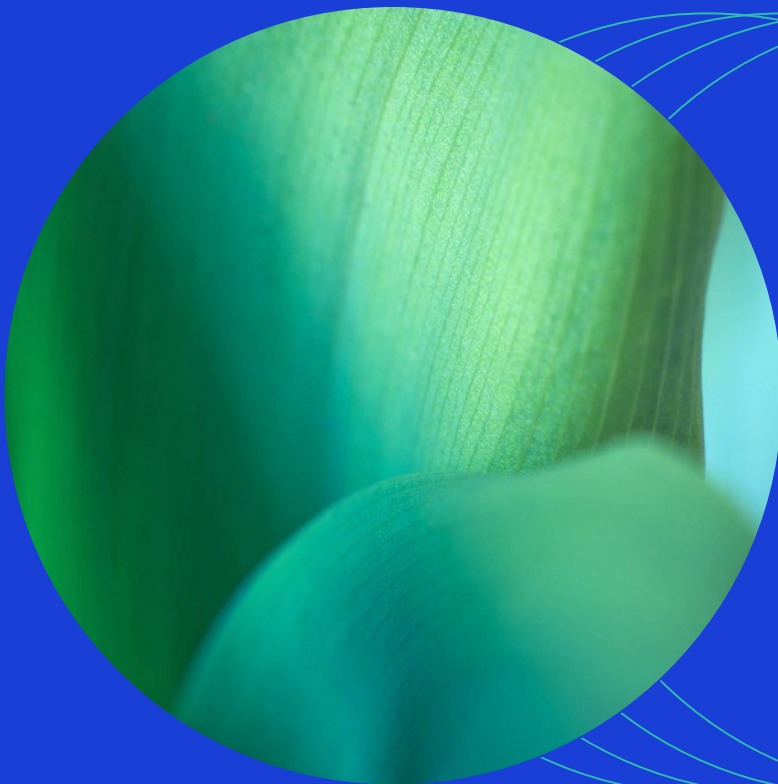




December 2025

MSCI Fixed Income Index Family – Benchmark Statement



Contents

1	Objective of the Indexes in the Family	3
2	Methodology and Index Guidelines and Reviews	5
3	Index Content Governance.....	6
4	Index Calculation and Discretion.....	7
5	Corrections	9
6	Consultations	10
7	Index Terminations	12
8	Index Usage	13
9	ESG Disclosures.....	14
10	Additional Information	15
	Appendix I: Key Terms.....	16

1 Objective of the Indexes in the Family

The MSCI fixed income index family is comprised of indexes whose aim is to accurately and objectively measure performance of a market or economic reality as represented by an investment opportunity set accessible to institutional investors based on a market universe, segment, theme, or investment strategy. MSCI's standard fixed income index methodologies are:

- MSCI Corporate Bond Indexes Methodology
- MSCI Government Bond Indexes Methodology
- MSCI EM Sovereign Bond Index Methodology
- MSCI EM Corporate Bond Index Methodology
- MSCI EM Government Bond Index Methodology

Other fixed income indexes within the family, including custom indexes, are in general derived and maintained based on the universe of securities defined by the MSCI's standard issuance-weighted fixed income index methodologies. Any exception to this rule would be highlighted in the respective fixed income index methodology books.

The fixed income universe from which MSCI constructs all its fixed income indexes is defined in the MSCI Fixed Income Data Methodology¹. A fixed income index representing a particular market universe, segment, theme, or investment strategy will reflect the relevant proportion of this universe.

The categorization of a particular market as developed or emerging is based on the MSCI Fixed Income Market Classification Framework.

MSCI fixed income indexes based on standard fixed income index methodologies serve as the parent index for other MSCI fixed income indexes that address specific investment themes such as MSCI ESG Indexes (including, MSCI Climate Indexes). MSCI ESG Indexes methodology may include screens, exclusion criteria or alternative weightings based on ESG factors.

A particular fixed income index will be governed by a number of methodology documents ("Methodology Set"), including the specific fixed income index methodology (or a parameter sheet if required), the MSCI Corporate Bond Index Methodology (or any other standard fixed income index methodologies), the MSCI Fixed Income Index Calculation Methodology, the MSCI Fixed Income Data Methodology and the MSCI Fixed Income Index Policies. In addition, Methodology Set for MSCI ESG Indexes includes a document 'ESG Factors in Methodology' that contains the list of environmental, social and governance factors considered, and how they are applied in the methodology (e.g., selection, weighting, or exclusion).

¹ MSCI Fixed Income Data Methodology is available at <https://www.msci.com/index-methodology>

The MSCI fixed income index family also includes custom indexes that may include specific screens, exclusion lists, or alternative weightings on parent indexes described above.

The MSCI fixed income index family contains only non-significant indexes as defined by Regulation (EU) 2016/1011 of the European Parliament and of the Council of 8 June 2016 on indexes used as benchmarks

2 Methodology and Index Guidelines and Reviews

MSCI indexes, regardless of index family, aim to accurately and objectively measure performance of a market or economic reality as represented by an investment opportunity set accessible to institutional investors based on a market universe, segment, theme, or investment strategy. MSCI indexes, regardless of index family, are constructed and maintained with the following prime objectives in mind:

- Representativeness
- Replicability
- Efficiency

The index design objectives of MSCI Fixed Income Indexes, including MSCI ESG Indexes, are achieved through the use of a transparent rules-based methodological approach to index construction and maintenance.

MSCI indexes are rebalanced on a regular schedule ranging from daily to annually. A rebalancing may also be triggered by conditions specified in the relevant methodology.

As part of the regular index rebalancing process, MSCI indexes are reviewed relative to the market or strategy they are designed to reflect. This assists in the evaluation of methodologies for both consistency and effectiveness and may highlight situations where changes in the methodology are warranted to reflect changes in the underlying market opportunity.

3 Index Content Governance

MSCI's Index Policy Committee ("IPC") and Fixed Income Index Committee ("FIIC") preside over content matters relating to its indexes, such as the development and interpretation of MSCI Fixed Income Index methodologies.

The FIIC is primarily responsible for supervising the design, development, approval, and interpretation of index methodologies. The FIIC's role is to ensure that the design of a given index aligns with the design objectives set forth in section 2 of this document that final decisions are consistent with the relevant index methodology, and that, in complex cases where different interpretations are possible, the right focus is applied. FIIC discussions may be informed by feedback from the investment community. Nonetheless, all decisions taken by the committees are the sole responsibility of its members.

Additionally, for the standard fixed income index methodologies and certain other designated methodologies, all results and analysis related to index reviews are reviewed, discussed, and approved by the FIIC.

The IPC serves as an escalation point for the FIIC. Relevant topics deemed to have material importance, as determined by the FIIC, are discussed, and decided by the IPC.

4 Index Calculation and Discretion

MSCI indexes in the MSCI fixed income index family are calculated using fixed income security prices provided by internationally recognized data vendors.

The return of the indexes is determined in several currencies including USD, EUR, GBP etc.

The MSCI fixed income indexes rely on the continued availability of prices from data vendors and permission for MSCI to use such data for determining the MSCI fixed income indexes. To the extent that such data is temporarily or permanently unavailable, MSCI fixed income indexes apply the fallback measures as described in the MSCI Fixed Income Index Calculation Methodology.

The rules for MSCI index construction, maintenance and calculation are contained in publicly available methodology books and complemented with internal guidelines and operating procedures. Each process is conducted by well-trained personnel according to the documented rules and operating procedures.

MSCI's rules-based index methodologies provide that discretion is not used in the production of the indexes except in unusual cases not effectively addressed by the methodology. These include, but may not be limited to:

- Corporate events not previously encountered or unusually complex in nature,
- Structural changes to the underlying markets,
- Geo-political events,
- Operational issues at data vendors
- Events beyond human control

Where there may be a need to take an action that is not prescribed in the methodology, senior members across the MSCI Index Research and Data Management departments will develop a proposed approach with the goal of remaining consistent with the goals of the methodology and ensuring timely calculation and distribution. These proposals are reviewed by the FIIC. In cases when time permits, and the cases are deemed material, MSCI may consult with clients on the proposed approach. MSCI will then announce the decided action to all market participants at the same time.

Typically, MSCI does not perform explicit ex-post analysis of decisions other than through its regular reviews of indexes and methodologies but always welcomes feedback from market participants on decisions made.

The framework described above eliminates the exercise of discretion by an individual and ensures any required exercise of discretion is managed through escalation to committees of experts. All

committees are governed by terms of reference, and all decisions are appropriately documented and archived. The IPC and FIIC currently each have at least 5 members respectively and decisions are reached by consensus.

5 Corrections

In the case of errors that occur in the determination or calculation of an index, regardless of the index family, if the impact of the error is below a documented threshold as defined in MSCI Fixed Income Index Policy document, no historical index restatement is made.

If the impact of the error on performance is above the threshold² as defined in MSCI Fixed Income Index Policy document, then indexes are restated historically.

In certain circumstances, such as errors in the list of index constituents (e.g., a security is unintentionally omitted), or the error that affects a large number of securities (e.g., a third of the prices in a particular market are in error), then MSCI may also correct and restate history, even if the aggregate performance impact is small.

MSCI applies a 12-month correction period for index errors. Errors discovered that are older than 12 months are generally not corrected.

Corrections related to regular index rebalancings, or corporate events are assessed on a case-by-case basis. MSCI typically considers the following factors in determining the most appropriate corrective action: index investability and replicability as well as potential reverse turnover.

All corrections are announced simultaneously to all market participants.

² Current threshold is 50 bps.

6 Consultations

MSCI indexes, regardless of the index family, are regularly reviewed and evaluated by the Index Research team. MSCI conducts consultations before making any material changes to a methodology.

A consultation typically begins with an announcement giving the highlights of the MSCI proposal(s) and indicating the location of the consultation document on MSCI's website. The announcement is widely distributed through multiple channels, including the MSCI website, Bloomberg, and Reuters, and directly to MSCI's clients. MSCI collects feedback from market participants in a variety of formats including but not limited to in-person meetings, calls, mails, surveys, etc. as deemed appropriate. These consultations provide relevant market participants the time and opportunity to comment on any potential changes to the concerned index methodology.

Once a consultation is closed and MSCI has gathered all required feedback, the FIIC and, if appropriate, the IPC, reviews the feedback and makes a decision. Any decision to implement changes is announced publicly prior to implementation.

The final decision, including the rationale that has led to it and high-level participation statistics are communicated publicly to all market participants at once. Most consultation participants request that their feedback remain confidential. MSCI may nevertheless publicly disclose feedback if specifically requested by respective market participants. In that case, the relevant feedback would be published together with the final results of the consultation.

If the final decision is to change the methodology, it will be part of the announcement, including the timeframe for the implementation of the change. Subsequently, MSCI will update the relevant methodology books.

The length of a consultation and lead time provided for implementation varies depending on the complexity of the topic, breadth of client impact as well as impact on the index composition and is clearly communicated as part of the consultation process. The length of a consultation needs to be sufficient for market participants to meaningfully review what is proposed and respond.

For custom indexes, changes to any client specifications are discussed directly with the relevant client.

In case of methodology changes that are not deemed as material³, MSCI may make such changes without launching a public consultation. In such cases, once the methodology changes are approved by the FIIC, they are announced by MSCI to all the market participants at the same time. MSCI considers prior feedback that may have been received on such topics, as part of its ongoing engagement with market participants. MSCI may also solicit views from its clients or other specific stakeholders on the consultation topic prior to making the changes.

³ The FIIC determines if a methodology change is material. This determination is made based on the analysis of the currently estimated or potential future impact of the methodology change on the index composition, measured by the changes in the selection and/or weights of the index constituents. Fundamental changes in the index construction principles would be generally considered as material.

7 Index Terminations

While terminations of MSCI indexes, regardless of index family, are rare, MSCI has clear written policies to address them. There may be certain circumstances where the methodology cannot be adapted in which case terminating the index may be required. These circumstances are generally not within MSCI's control and may include significant changes to the structure of underlying market, drastic changes to the market infrastructure, lack of access to necessary data, geo-political events, and regulatory changes. Additionally, factors such as methodology convergence or low usage may result in MSCI's proposal to terminate an index.

In all these cases if an index termination is proposed or required, MSCI would proceed as follows:

- The FIIC would review the appropriateness and impact of a potential termination.
- MSCI may perform a consultation including a discussion of possible alternatives, if any.
- MSCI would announce the termination of the index in advance.
- If practicable, MSCI would continue to calculate the index for an announced period of time to give users the opportunity to transition to another index or otherwise prepare for the termination of the MSCI index.
- In the event that an appropriate alternative MSCI index is established, the details of the methodology governing this index as well as the timing of the transition would be publicly announced in advance of the implementation.

Indexes may also be discontinued if fewer than the required minimum number of securities are eligible for inclusion when applying a given methodology to a market. In these cases, the index can no longer be calculated in compliance with the applicable methodology and it will simply stop. MSCI may resume calculation of such indexes if, over time, enough securities become eligible.

The termination of a custom index is handled in consultation with the relevant client.

8 Index Usage

MSCI indexes, regardless of index family, may be used for a variety of purposes, including for research or use as the basis for index-linked investment products. They may be used by a variety of market participants including but not limited to asset owners, portfolio managers, broker-dealers, and researchers. Not all uses are appropriate for all users. Market participants should use their judgment when selecting an index for a particular purpose.

MSCI indexes, and the effectiveness of index methodologies can be affected by several factors, most of which are beyond MSCI's control. These may include, but are not limited to, structural changes to the underlying market including decreases in the size and liquidity of the relevant market segment, infrastructure changes, geo - political events, and regulatory changes. These circumstances may result in a material change to the index methodology as a result. In rare cases, these circumstances may result in the termination of an index.

If financial product issuers or investment managers choose to use an MSCI index, regardless of index family, as the basis of an index-linked financial product or an investment fund, they should consider this possibility, including the potential need to terminate or modify the terms of a financial product resulting from the termination of the calculation of the index.

MSCI assumes no responsibility for potential use of its indexes, regardless of index family, for particular purpose by clients, whether that use is for research, benchmarking, the basis for an index-linked financial product or investment fund, or some other use. The effective representation of a market or strategy is the primary aim for MSCI.

9 ESG Disclosures

ESG disclosures are provided as per the following regulations that were published in the EU Official Journal on December 3, 2020:

- Commission Delegated Regulation (EU) 2020/1816 of 17 July 2020 supplementing Regulation (EU) 2016/1011 of the European Parliament and of the Council as regards the explanation in the benchmark statement of how environmental, social and governance factors are reflected in each benchmark provided and published.
- Commission Delegated Regulation (EU) 2020/1817 of 17 July 2020 supplementing Regulation (EU) 2016/1011 of the European Parliament and of the Council as regards the minimum content of the explanation on how environmental, social and governance factors are reflected in the benchmark methodology.

The ESG disclosures pertaining to Commission Delegated Regulation (EU) 2020/1816 for indexes in the MSCI fixed income benchmark family are published by MSCI at: <https://www.msci.com/index-profile>.

The ESG disclosures pertaining to Commission Delegated Regulation (EU) 2020/1817 of 17 July 2020 are provided together with the methodology documents governing a specific MSCI index in the MSCI fixed income benchmark family and can be accessed from MSCI's webpage www.msci.com/index-methodology/ in the section 'Search Methodology by Index Name or Index Code'. Methodology documents pertaining to MSCI ESG Indexes include 'ESG Factors in Methodology' that contains the list of ESG factors considered, and how they are applied in the ESG index methodology (e.g., selection, weighting, or exclusion). Potential limitations of ESG factors data being used in individual index methodologies are described in the corresponding index methodology books as appropriate. In general, for standard ESG indexes and Climate indexes, securities are deemed ineligible for inclusion in the index if the relevant ESG factor data used for screening is unavailable. MSCI also makes available custom indexes, for which the treatment of unavailable ESG factors data may differ depending upon the corresponding client preferences. The specific treatment for each index methodology is governed by the Methodology Set for the given index methodology.

The disclosures pertaining to Article 27(2a) of Regulation (EU) 2016/1011 as to whether or not, and to what extent, a degree of overall alignment with the target of reducing carbon emissions or the attainment of the objectives of the Paris Agreement is ensured for indexes in the MSCI fixed income benchmark family are published by MSCI at: <https://www.msci.com/index-profile>.

10 Additional Information

Detailed methodology and policy documents, a search function to find the methodology documents governing a specific MSCI index, regardless of index family, and vendor reference codes, if available, can be found on <http://www.msci.com/index-methodology/>

DATE OF PUBLICATION: December 31st, 2025

DATE OF LAST UPDATE: December 31st, 2025

Appendix I: Key Terms

Key term	Definition
Fixed Income Index Committee (FIIC)	The Fixed Income Index Committee (FIIC) is primarily responsible for the supervision of the design, development, approval, and interpretation of index methodologies. Decisions taken by the FIIC are the sole responsibility of its members. The committee is staffed strictly by MSCI employees.
Sustainability & Climate Indexes	Indexes that are designed to measure the performance accurately and objectively by an investment opportunity set that represents an investment strategy focused on Sustainability or Climate themes.
ESG Factors	Data pertaining to environmental, social and governance characteristics. ESG Indexes may use ESG factors for screening, defining exclusion criteria, and for alternative weighting of the constituents. Methodology Set of ESG indexes includes a document 'ESG Factors in Methodology' that contains the list of ESG factors considered, and how they are applied in the methodology (e.g., selection, weighting, or exclusion)
Index Policy Committee (IPC)	The Index Policy Committee (IPC) is responsible for final decisions with respect to market classifications and may be consulted on selected index terminations and is an escalation point for the FIIC. Relevant topics deemed to have material importance, as determined by the FIIC, are discussed, and decided by the IPC.
Methodology Set	Indexes are governed by a set of methodology and policy documents. The Methodology Set for the Indexes can be accessed from MSCI's webpage www.msci.com/index-methodology in the section 'Search Methodology by Name or Index Code'.

Contact Us

About MSCI

MSCI is a leading provider of critical decision support tools and services for the global investment community. With over 50 years of expertise in research, data and technology, we power better investment decisions by enabling clients to understand and analyze key drivers of risk and return and confidently build more effective portfolios. We create industry-leading research-enhanced solutions that clients use to gain insight into and improve transparency across the investment process.

To learn more, please visit www.msci.com.
msci.com/contact-us

The process for submitting a formal index complaint can be found on the index regulation page of MSCI's website at: <https://www.msci.com/index-regulation>.

AMERICA

United States	+ 1 888 588 4567 *
Canada	+ 1 416 687 6270
Brazil	+ 55 11 4040 7830
Mexico	+ 52 81 1253 4020

EUROPE, MIDDLE EAST & AFRICA

South Africa	+ 27 21 673 0103
Germany	+ 49 69 133 859 00
Switzerland	+ 41 22 817 9777
United Kingdom	+ 44 20 7618 2222
Italy	+ 39 02 5849 0415
France	+ 33 17 6769 810

EUROPE, MIDDLE EAST & AFRICA

China	+ 86 21 61326611
Hong Kong	+ 852 2844 9333
India	+ 91 22 6784 9160
Malaysia	1800818185 *
South Korea	+ 82 70 4769 4231
Singapore	+ 65 67011177
Australia	+ 612 9033 9333
Taiwan	008 0112 7513 *
Thailand	0018 0015 6207 7181 *
Japan	+ 81 3 4579 0333

* toll-free

Notice and Disclaimer

The data, data feeds, databases, reports, text, graphs, charts, images, videos, recordings, models, metrics, analytics, indexes, ratings, scores, cases, estimates, assessments, software, websites, products, services and other information and materials contained herein or delivered in connection with this notice (collectively, the "Information") are copyrighted, trade secrets (when not publicly available), trademarks and proprietary property of MSCI Inc. or its subsidiaries (collectively, "MSCI"), MSCI's licensors, direct or indirect suppliers and authorized sources, and/or any third party contributing to the Information (collectively, with MSCI, the "Information Providers"). All rights in the Information are reserved by MSCI and its Information Providers and user(s) shall not, nor assist others to, challenge or assert any rights in the Information.

Unless you contact MSCI and receive its prior written permission, you must NOT use the Information, directly or indirectly, in whole or in part (i) for commercial purposes, (ii) in a manner that competes with MSCI or impacts its ability to commercialize the Information or its services, (iii) to provide a service to a third party, (iv) to permit a third party to directly or indirectly access, use or resell the Information, (v) to redistribute or resell the Information in any form, (vi) to include the Information in any materials for public dissemination such as fund factsheets, market presentations, prospectuses, and investor information documents (e.g. KIDs or KIDs), (vii) to create or as a component of any financial products, whether listed or traded over the counter or on a private placement basis or otherwise, (viii) to create any indexes, ratings or other data products, including in derivative works combined with other indexes or data or as a policy, product or performance benchmarks for active, passive or other financial products, (ix) to populate a database, or (x) to train, use as an input to, or otherwise in connection with any artificial intelligence, machine learning, large language models or similar technologies except as licensed and expressly authorized under MSCI's AI Contracting Supplement at <https://www.msci.com/legal/supplemental-terms-for-client-use-of-artificial-intelligence>.

The intellectual property rights of MSCI and its Information Providers may not be misappropriated or used in a competitive manner through the use of third-party data or financial products linked to the Information, including by using an MSCI index-linked future or option in a competing third-party index to provide an exposure to the underlying MSCI index or by using an MSCI index-linked ETF to create a financial product that provides an exposure to the underlying MSCI index without obtaining a license from MSCI.

The user or recipient of the Information assumes the entire risk of any use it may make, permit or cause to be made of the Information. NONE OF THE INFORMATION PROVIDERS MAKES ANY EXPRESS OR IMPLIED WARRANTIES OR REPRESENTATIONS WITH RESPECT TO THE INFORMATION (OR THE RESULTS TO BE OBTAINED BY THE USE THEREOF), AND TO THE MAXIMUM EXTENT PERMITTED BY APPLICABLE LAW, EACH INFORMATION PROVIDER EXPRESSLY DISCLAIMS ALL IMPLIED WARRANTIES (INCLUDING ANY IMPLIED WARRANTIES OF ORIGINALITY, ACCURACY, TIMELINESS, SUITABILITY, NON-INFRINGEMENT, COMPLETENESS, MERCHANTABILITY AND FITNESS FOR A PARTICULAR PURPOSE) WITH RESPECT TO ANY OF THE INFORMATION. Without limiting any of the foregoing and to the maximum extent permitted by applicable law, in no event shall MSCI or any other Information Provider have any liability arising out of or relating to any of the Information, including for any direct, indirect, special, punitive, consequential (including lost profits) or any other damages, even if notified of the possibility of such damages. The foregoing shall not exclude or limit any liability that may not be applicable by law be excluded or limited.

The Information, including index construction, ratings, historical data, or analysis, is not a prediction or guarantee of future performance, and must not be relied upon as such. Past performance is not indicative of future results. The Information may contain back tested data. Back-tested performance based on back-tested data is not actual performance but is hypothetical. There are frequently material differences between back tested performance results and actual results subsequently achieved by any investment strategy. The Information may include "Signals," defined as quantitative attributes or the product of methods or formulas that describe or are derived from calculations using historical data. Signals are inherently backward-looking because of their use of historical data, and they are inherently inaccurate, not intended to predict the future and must not be relied upon as such. The relevance, correlations and accuracy of Signals frequently change materially over time.

The Information may include data relating to indicative prices, evaluated pricing or other information based on estimates or evaluations (collectively, "Evaluations") that are not current and do not reflect real-time traded prices. No evaluation method, including those used by the Information Providers, may consistently generate evaluations or estimates that correspond to actual "traded" prices of any relevant securities or other assets. Evaluations are subject to change at any time without notice and without any duty to update or inform you, may not reflect prices at which actual transactions or collateral calls may occur or have occurred. The market price of securities, financial instruments, and other assets can be determined only if and when executed in the market. There may be no, or may not have been any, secondary trading market for the relevant securities, financial instruments or other assets. Private capital, equity, credit and other assets and their prices may be assessed infrequently, may not be priced on a secondary market, and shall not be relied upon as an explicit or implicit valuation of a particular instrument. Any reliance on fair value estimates and non-market inputs introduces potential biases and subjectivity. Internal Rate of Return metrics are not fully representative without full disclosure of fund cash flows, assumptions, and time horizons.

The Information does not constitute, and must not be relied upon as, investment advice, credit ratings, or proxy advisory or voting services. None of the Information Providers, their products or services, are fiduciaries or make any recommendation, endorsement, or approval of any investment decision or asset allocation. Likewise, the Information does not represent an offer to sell, a solicitation to buy, or an endorsement of any security, financial product, instrument, investment vehicle, or trading strategy, whether or not linked to or in any way based on any MSCI index, rating, subcomponent, or other Information (collectively, "Linked Investments"). The Information should not be relied on and is not a substitute for the skill, judgment and experience of any user when making investment and other business decisions. MSCI is not responsible for any user's compliance with applicable laws and regulations. All Information is impersonal, not tailored to the needs of any person, entity or group of persons, not objectively verifiable in every respect, and may not be based on information that is important to any user.

It is not possible to invest in an index. Exposure to an asset class or trading strategy or other category represented by an index is only available through third party investable instruments (if any) based on that index. MSCI makes no assurance that any Linked Investments will accurately track index performance or provide positive investment returns. Index returns do not represent results of actual trading of investible assets/securities. MSCI maintains and calculates indexes but does not manage assets. The calculation of indexes and index returns may deviate from the stated methodology. Index returns do not reflect payment of any sales charges or fees an investor may pay to purchase securities underlying the index or Linked Investments. The imposition of these fees and charges would cause the performance of a Linked Investment to be different than the MSCI index performance.

Information provided by MSCI Solutions LLC and certain related entities ("MSCI Solutions"), including materials utilized in MSCI sustainability and climate products, have not been submitted to, nor received approval from any regulatory body. MSCI sustainability and climate offerings, research and data are produced by, and ratings are solely the opinion of MSCI Solutions. MSCI India Domestic ESG Ratings are produced by MSCI ESG Ratings and Research Private Limited and offered domestically in India. Other MSCI products and services may utilize information from MSCI Solutions, Barra LLC or other affiliates. More information can be found in the relevant methodologies on www.msci.com. MSCI Indexes are administered by MSCI Limited (UK) and MSCI Deutschland GmbH. No regulated use of any MSCI private real assets indexes in any jurisdiction is permitted without MSCI's express written authorization. The process for applying for MSCI's express written authorization can be found at: <https://www.msci.com/index-regulation>.

MSCI receives compensation in connection with licensing its indexes and other Information to third parties. MSCI Inc.'s revenue includes fees based on assets in Linked Investments. Information can be found in MSCI Inc.'s company filings on the Investor Relations section of msci.com. Issuers mentioned in MSCI Solutions materials or their affiliates may purchase research or other products or services from one or more MSCI affiliates, manage financial products such as mutual funds or ETFs rated by MSCI Solutions or its affiliates or are based on MSCI Indexes. Constituents of MSCI equity indexes are listed companies, which are included in or excluded from the indexes according to the application of the relevant index methodologies. Constituents in MSCI Inc. equity indexes may include MSCI Inc., clients of MSCI or suppliers to MSCI. MSCI Solutions has taken steps to mitigate potential conflicts of interest and safeguard the integrity and independence of its research and ratings.

MIFID2/MIFIR notice: MSCI Solutions does not distribute or act as an intermediary for financial instruments or structured deposits, nor does it deal on its own account, provide execution services for others or manage client accounts. No MSCI product or service supports, promotes or is intended to support or promote any such activity. MSCI Solutions is an independent provider of sustainability and climate data. All use of indicative prices for carbon credits must comply with any rules specified by MSCI. All transactions in carbon credits must be traded "over-the-counter" (i.e. not on a regulated market, trading venue or platform that performs a similar function to a trading venue) and result in physical delivery of the carbon credits.

You may not remove, alter, or obscure any attribution to MSCI or notices or disclaimers that apply to the Information. MSCI, Barra, RiskMetrics, and other MSCI brands and product names are the trademarks, service marks, or registered trademarks of MSCI or its subsidiaries in the United States and other jurisdictions. The Global Industry Classification Standard (GICS) was developed by and is the exclusive property of MSCI and S&P Dow Jones Indices. "Global Industry Classification Standard (GICS)" is a service mark of MSCI and S&P Dow Jones Indices. Terms such as including, includes, for example, such as and similar terms used herein are without limitation.

MSCI and its Information Providers may use automated technologies and artificial intelligence to help generate content and output incorporated in the Information.

Privacy notice: For information about how MSCI collects and uses personal data, please refer to our Privacy Notice at: <https://www.msci.com/privacy-pledge>. For copyright infringement claims contact us at dmca@msci.com. This notice is governed by the laws of the State of New York without regard to conflict of laws principles.