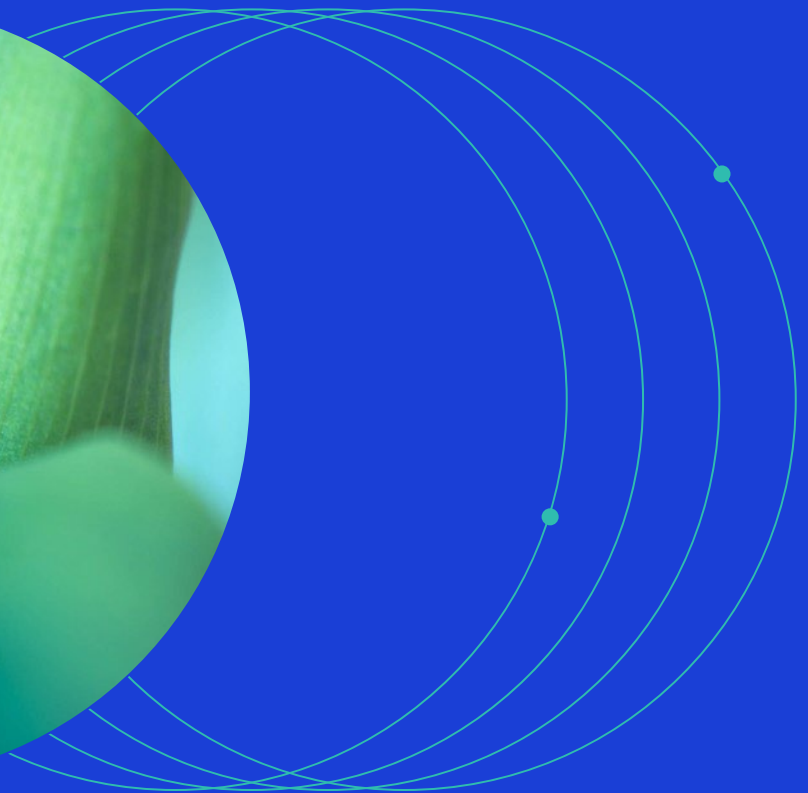
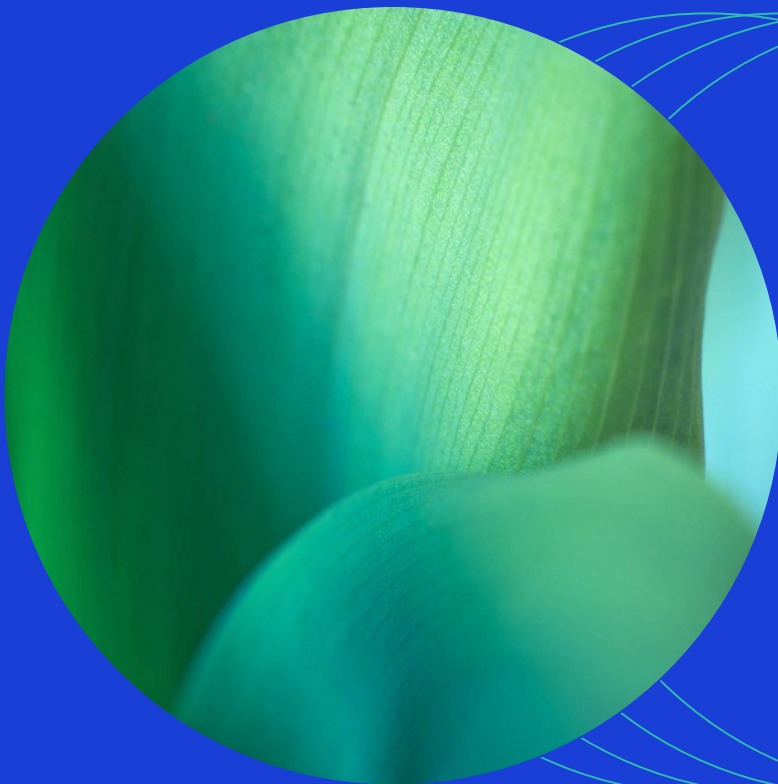




December 2025

MSCI Fixed Income Glossary



Contents

1.	Introduction	3
2.	Constituent Level Terminology	4
3.	Index Level Terminology	10

1. Introduction

MSCI Fixed Income Index - Glossary of Terms aims to provide a general outline of the terminology used in MSCI Fixed Income Index methodologies.

Please refer to MSCI Fixed Income Index Calculation Methodology for precise details on index calculation and event handling. Further refer to MSCI Fixed Income Data Methodology document for granular details on input data points like fixed income security prices, yield, spread, duration, convexity etc.

2. Constituent Level Terminology

Term	Description
144A bond	144A bond is a privately placed bond that is not subject to 2-year minimum holding period requirement and is traded among Qualified Institutional Buyers under the SEC rule 144A.
Accrued Interest	Accrued interest is the amount of interest as a percentage of par that accrues between the last coupon date and the current date.
Ask Price / Offer Price	Ask price / Offer price is the price at which a market participant is prepared to sell a security.
Bid Price	Bid price is the price at which a market participant is prepared to purchase a security.
Bullet bond	Bullet bond is a non-callable bond with a fixed maturity where the entire principal is paid all at once on the maturity date, as opposed to amortizing the bond over its lifetime.
Call	Call is an action taken to pay the principal amount prior to the stated maturity date, in accordance with the provisions for "call" stated in the bond indenture.
Call Date	Call date is the date at which a bond is redeemable by the issuer prior to the maturity date.
Call Price	Call price is the specified price at which a bond may be redeemed or called prior to the maturity date.
Callable Bond	Callable bond is a bond with an embedded option for the issuer to redeem the bond prior to the maturity date, at the call price.
Clean Price	Clean price is the price of a bond excluding accrued interest.
Convertible bond	Convertible bond is a bond with an option allowing the bondholder to exchange the bond for a specified number of shares or common stock.
Convexity	Convexity of a bond is the second derivative of the bond price with respect to yield. It measures the change of duration for a percentage change in yield.
Corporate Bond	Corporate bond is a bond issued by a private corporation.

Term	Description
Coupon	Coupon is the interest rate a bond's issuer promises to pay to the bondholder until maturity, or other redemption event, generally expressed as an annual percentage of the bond's face value.
Coupon Frequency	Coupon frequency is the frequency with which a bond pays interest (e.g., quarterly, semi-annually, yearly).
Coupon Income	Coupon Income is the sum of income derived from regular interest payments received on the face value of bond and accrued interest.
Credit Rating	Credit rating is an evaluation of the credit risk of a prospective issuer, predicting the issuer's ability to pay back the debt, and is an implicit forecast of the likelihood of the issuer defaulting.
CUSIP	The Committee on Uniform Security Identification Procedures (CUSIP) was established by the American Bankers Association to develop a uniform method of identifying securities. CUSIP numbers are unique nine-character alphanumeric identifiers assigned to each series of securities. CUSIPs are assigned by CUSIP Global Services (CGS), the overarching entity representing all CUSIP global identification offerings. CGS is managed on behalf of the American Bankers Association (ABA) by Standard & Poor's CUSIP Service Bureau.
Dirty Price	Dirty price is the price of a bond including accrued interest.
Dual Currency Bond	Dual currency bond is a bond which has coupon payments in one currency and the principal payment in another currency.
Duration to Worst	Duration to Worst is the duration of a bond computed using the nearest call date or maturity, whichever comes first.
Effective Convexity	Effective convexity is measure of a bond's convexity which takes into account its embedded options.
Effective Duration	Effective duration is measure of a bond's duration which takes into account its embedded options.
Equity Clawbacks	Equity Clawbacks allow the bond issuer to refinance a certain amount of the outstanding bonds with proceeds from an equity offering.
Fixed to Floating Rate Bond	Fixed to floating rate bond is a bond where coupon rate changes from fixed rate to floating rate on pre-determined date in future.
Floating Rate Bond	Floating rate bond is a bond with variable coupon rate.

Term	Description
Fungible Bonds	Fungible bonds are new bonds that are issued as separate tranches but are eventually merged or 'funged' into existing bonds of the same issuer, with which they share the same characteristics.
Hybrid Bond	Hybrid bond is bond which combines both debt and equity characteristics. The most common type of hybrid bond is a convertible bond.
Income Return	Income Return of a bond represents part of total return that is attributable to change in the accrued interest, as well as it accounts for cash inflow from coupon payments and income from principal redemption.
Investment Grade	Investment grade is a broad credit designation given to bonds which have a high probability of being paid and minor, if any, speculative features. Bonds rated Baa3 and higher by Moody's Investors Service or BBB- and higher by Standard & Poor's are deemed by those agencies to be "investment grade."
Inflation Protected Bond	Inflation protected bond is a bond that is indexed to inflation and pays investors a fixed interest rate on the bond's par value adjusted for inflation.
ISIN	An International Securities Identification Number (ISIN) uniquely identifies a security. Its structure is defined in International Standard for Organization 6166. Securities for which ISINs are issued include bonds, commercial paper, equities and warrants. The ISIN code is a 12-character alpha-numerical code that does not contain information characterizing financial instruments but serves for uniform identification of a security at trading and settlement.
Market Value	Market Value of a bond is defined as the product of its amount outstanding and dirty price.
Market Value with Cash	Market Value with Cash of a bond is defined as sum of its market value and its total cumulative cash balance.
Maturity Date	Maturity date is the date when the principal amount of the bond is due to be repaid and interest payments stop.
Modified Duration	Modified duration of a bond is the first derivative of the bond price with respect to yield. It measures the change of price for a percentage change in yield.
Amount Outstanding	Amount outstanding is the principal amount outstanding of the bond.

Term	Description
OAS (Option Adjusted Spread)	OAS is the spread over the benchmark zero coupon curve that is realized if the bond is held until maturity. Its calculation considers the interest rate volatility for the embedded option in the bond.
Payment-In-Kind bond	Payment-in-kind bond is a type of bond that defers complete or partial coupon payment by delivering more bonds in the form of additional amount outstanding to the bondholder.
Perpetual bond	Perpetual bond is a bond with no maturity date.
Preferred Stock	Preferred stock is stock that pays a fixed dividend. In a company's capital structure it has preference over common stocks, but is behind debt in the case of bankruptcy.
Price Income	Price income is the income generated due to change in clean price of bond due to market movements.
Price Return	Price return of a bond represents part of total return that is attributable to change in the clean price of a bond.
Private Placement Bond	Private placement bond is a bond sold directly to an investor.
Puttable Bond	Puttable bond is a bond that gives the holder the right to force the issuer or the issuer's agent to repurchase the bond at a predetermined price, at a predetermined date or dates, prior to the final stated maturity date.
Redemption Income	Redemption Income is income generated from redemption of principal at a price which is either at a premium or discount compared to bond's closing market price on the day.
Regulation S (Reg S)	Regulation S – often referred to as 'Reg S', provides an SEC compliant way for US and non-US companies to raise capital outside the United States.
Senior Bond	Senior bond holds senior debt which is considered lower risk than subordinated debt. Although senior debt holders must be repaid before other unsecured creditors in a bankruptcy event, the securities are backed only by the credit of the issuer and its ability to service the debt.
SIFMA US Holidays	The Securities Industry and Financial Markets Association (SIFMA) is a United States industry trade group representing securities firms, banks, and asset management companies. On behalf of financial markets participants, SIFMA recommends a holiday schedule for financial markets in the U.S., U.K. and Japan. All SIFMA holiday recommendations apply to the trading of U.S. dollar-denominated government securities, mortgage-

Term	Description
	and asset-backed securities, over-the-counter investment-grade and high-yield corporate bonds, municipal bonds and secondary money market trading in bankers' acceptances, commercial paper and Yankee and Euro certificates of deposit.
Sinkable bond	Sinkable bond is a bond backed by a fund that sets aside money at a pre-defined rate and according to a pre-defined schedule, to ensure principal and interest payments.
Step-down coupon bond	Step-down coupon bond is a bond in which coupon decreases over time at pre-determined rates and dates in the future.
Step-up coupon bond	Step-up coupon bond is a bond in which coupon increases over time at pre-determined rates and dates in the future.
Strippable Bond	Strippable bond is a bond in which regular coupon and the principal are divided and sold separately.
Subordinated Bond	Subordinated bond holds subordinated debt which is any type of loan that's paid after all other corporate debts and loans are repaid, in the event of a borrower's bankruptcy.
Sukuk Bond	A sukuk bond is a financial product whose terms and structures comply with the sharia law. It is issued with an intent to create returns similar to those of conventional bonds. However, unlike a conventional bond which represents the debt obligation of the issuer, a sukuk technically represents an interest in an underlying funding arrangement structured according to the sharia which entitles the holder to a proportionate share of the returns generated by such arrangement at a defined future date.
Time to Maturity	Time to maturity is calculated as the number of years between the current date and the maturity date.
Total cumulative cash balance	Total cumulative cash balance of the bond is the sum of cash accrued from its interest payments and principal redemption since the last rebalancing date. Total cumulative cash balance of the security is reset to zero on the rebalancing date.
Total Return	Total return is the sum of the Income return and the Price return of a bond.
Warrant	Warrant attached to bond entitles the holder to buy the underlying stock of the issuing company at a fixed price called exercise price until the expiry date.

Term	Description
Yield to Maturity	Yield to maturity is an annual rate of return expected on a bond based on its current price and the assumption that it will be held till the maturity date.
Yield to Worst	Yield to worst represents the lowest potential yield that an investor would receive on a bond if provisions like prepayment, call etc. are used by the issuer.
Zero Coupon bond	Zero coupon bond is a bond which does not pay any coupon.

3. Index Level Terminology

Term	Description
Announcement Date	Announcement date is the date on which results of index review are disseminated publicly.
Annual FI Market Classification Review	Annual cycle aiming to review the classification of Fixed Income Markets into Developed & Emerging. The results of each annual cycle are announced in June.
Base date (decarbonization)	Reference date relative to which the decarbonization trajectory is calculated, in accordance with the concept of "base year" defined by the EU Commission's Delegated Act containing the minimum technical requirements for the EU Climate Transition Benchmarks and EU Paris-aligned Benchmarks (https://eur-lex.europa.eu/legal-content/EN/TXT/PDF/?uri=CELEX:32020R1818&from=EN)
Base date of the index	The date where the index has its base value and against which the performance of the index is measured.
Capping	The process of limiting the maximum weight of a security in an index, typically to avoid concentration risk.
Controversial Business Involvement Criteria	Criteria used to identify companies that are involved in certain business activities, based on products of MSCI Solutions such as (but not limited to) the MSCI Business Involvement Screening Research and MSCI Climate Change Metrics.
Cut-off Date	Cut-off date is the date whereby, data as of close of that date is considered in the index rebalancing.
Daily Index Return	Daily Index Return is day-over-day change in index levels.
Controversies	<p>A product of MSCI Solutions named "MSCI Controversies", that provides assessments of controversies concerning the potential negative environmental, social, and/or governance impact of company operations, products, and services. MSCI Controversies Score is integer-valued using a 0-10 scale, with "0" being the most severe controversy.</p> <p>The MSCI Controversies methodology can be found at: https://www.msci.com/esg-and-climate-methodologies</p>
ESG Rating	A factor produced by MSCI Solutions and named "MSCI ESG Rating", that aims to measure entities' management of environmental, social and governance risks and opportunities. MSCI ESG Ratings are translated from the MSCI ESG Score into a seven-point scale from 'AAA' to 'CCC',

Term	Description
	<p>indicating how an entity manages relevant key issues relative to industry peers.</p> <p>The MSCI ESG Ratings methodology can be found at: https://www.msci.com/esg-and-climate-methodologies</p>
Fixed Index Methodologies	Methodology documents containing construction and maintenance rules for the MSCI Fixed Income Indexes. Any index family is governed by a number of documents: the specific index methodology, the MSCI Corporate Bond Indexes, the MSCI Government Bond Indexes, the MSCI Index Calculation methodology, the MSCI Fundamental Data methodology and the MSCI Index Policies
GICS Structure	GICS is designed with four levels of classifications, starting with sectors on the top, branching into industry groups, industries and finally the sub-industries at the grass root level
GICS Structure Review	Annual Review of the GICS Structure to ensure that the GICS structure remains relevant and current to the investment community.
Global Industry Classification Standard (GICS)	<p>Standard developed by MSCI and S&P Dow Jones Indices used to classify companies within the Global Investable Equity Universe to an industry based on its principal business activity.</p> <p>The Global Industry Classification Standard (GICS) was developed by and is the exclusive property of MSCI and S&P Global Market Intelligence. "Global Industry Classification Standard (GICS)" is a service mark of MSCI and S&P Global Market Intelligence.</p>
Index Rebase	Changes to the base date and base value of an index.
Index Review	Regular index maintenance process performed at the frequency defined by the relevant index methodologies. Many indexes, including the MSCI Corporate Bond Indexes and the MSCI Government Bond Indexes are reviewed on a monthly basis. Other indexes may be reviewed at a different frequency, e.g., monthly, semi-annually, or annually.
Income Return Index Level	Income Return Index level represents cumulative performance of index relative to its base value, due to income return of constituent securities.
Index Average Amount Outstanding	Index average amount outstanding is the simple average of the outstanding principal of all the securities in the index.
Index Average Clean Price	Index average clean price is the amount outstanding weighted average of the clean price of all the bonds in the index.

Term	Description
Index Average Convexity	Index average convexity is market value weighted average of the convexity of all the bonds in the index.
Index Average Coupon	Index average coupon is the amount outstanding weighted average of the coupon of all the bonds in the index.
Index Average Credit Rating	Index average credit rating is the market value weighted average of the credit rating of all the bonds in the index.
Index Average Dirty Price	Index average dirty price is the amount outstanding weighted average of the dirty price of all the bonds in the index.
Index Average Effective Convexity	Index average effective convexity is the market value weighted average of the effective convexity of all the bonds in the index.
Index Average Effective Duration	Index average effective duration is the market value weighted average of the effective duration of all the bonds in the index.
Index Average Modified Duration	Index average modified duration is the market value weighted average of the modified duration of all the fixed income securities in the index.
Index Average OAS	Index average OAS is the market value weighted average of the option adjusted spread of all the bonds in the index.
Index Average Time to Maturity	Index average time to maturity is the market value weighted average of the time to maturity of all the bonds in the index.
Index Average Yield to Maturity	Index average yield to maturity is the market value weighted average of the yield to maturity of all the bonds in the index.
Index Average Yield to Worst	Index average yield to worst is the market value weighted average of the yield to worst of all the bonds in the index.
Index Base Value	Index base value is starting value (e.g. 1000) of an index against which ongoing calculations are done and performance of the index is measured.
Index Constituent Count	Index constituent count is the number of bonds in the index.
Index Income Return	Index income return is market value weighted average of constituent level income return of bonds in the index.

Term	Description
Index Level	Index level is value of an index relative to its base value.
Index Price Return	Index price return is market value weighted average of constituent level price return of bonds in the index.
Index Total Return	Index total return is market value weighted average of constituent level total return of bonds in the index.
MSCI Solutions	A short name for MSCI Solutions LLC, a subsidiary of MSCI Inc. that produces and provides information such as company ratings and research that are used by MSCI Inc. for the construction and maintenance of MSCI Indexes.
Parent Index	MSCI index used as the universe for the construction of any derived index. For example: MSCI USD IG Core Corporate Bond Index is the parent index for MSCI USD IG Core Universal Corporate Bond Index.
Price Return Index Level	Price Return Index level represents cumulative performance of index relative to its base value, due to price return of constituent securities.
Rebalancing	Rebalancing of an index is the application of the index methodology rules which generally results in additions, deletions and weight changes of the underlying securities in the index.
Rebalancing date	Rebalancing date is date when the changes to the index published on the announcement date become effective.
Replicability and Investability of a benchmark	Level of accessibility of index constituents by a target investor group enabling passive replication of a benchmark
Representativeness of a benchmark	Ability of a benchmark to reflect an investment process it aims to represent.
Restrictiveness level (framework)	Framework designed by MSCI Solutions to define significant involvement in controversial activities. According to this framework, there are four restrictiveness levels: Most Restrictive, Highly Restrictive, Moderately Restrictive, Least Restrictive. The framework and the corresponding restrictiveness levels are used to screen certain controversial activities from the MSCI Indexes.
Settlement Date	Settlement date is date on which the trade settles i.e. securities must be paid for (purchase) or securities must be delivered (sale).

Term	Description
Strategy Indexes	Indexes that are based on alternative weighting schemes and introduce a tilt towards certain variables (for example: Factors, ESG, Climate, Themes, etc.) intended to capture systematic risk premia or other fundamental characteristics.
Sustainable Impact	A product of MSCI Solutions named "MSCI Impact Solutions: Sustainable Impact Metrics", designed to identify companies that derive revenue from products or services with positive impact on society and the environment. The MSCI Sustainable Impact Metrics are comprised of Environmental Impact and Social Impact categories.
Total Return Index Level	Total Return Index level represents cumulative performance of index relative to its base value, due to total return of constituent bonds.
Turnover	Turnover is the measure of the index composition shift using the market value of securities entering and exiting the index.

Contact Us

About MSCI

MSCI is a leading provider of critical decision support tools and services for the global investment community. With over 50 years of expertise in research, data and technology, we power better investment decisions by enabling clients to understand and analyze key drivers of risk and return and confidently build more effective portfolios. We create industry-leading research-enhanced solutions that clients use to gain insight into and improve transparency across the investment process.

To learn more, please visit www.msci.com.
msci.com/contact-us

The process for submitting a formal index complaint can be found on the index regulation page of MSCI's website at: <https://www.msci.com/index-regulation>.

AMERICA

United States	+ 1 888 588 4567 *
Canada	+ 1 416 687 6270
Brazil	+ 55 11 4040 7830
Mexico	+ 52 81 1253 4020

EUROPE, MIDDLE EAST & AFRICA

South Africa	+ 27 21 673 0103
Germany	+ 49 69 133 859 00
Switzerland	+ 41 22 817 9777
United Kingdom	+ 44 20 7618 2222
Italy	+ 39 02 5849 0415
France	+ 33 17 6769 810

EUROPE, MIDDLE EAST & AFRICA

China	+ 86 21 61326611
Hong Kong	+ 852 2844 9333
India	+ 91 22 6784 9160
Malaysia	1800818185 *
South Korea	+ 82 70 4769 4231
Singapore	+ 65 67011177
Australia	+ 612 9033 9333
Taiwan	008 0112 7513 *
Thailand	0018 0015 6207 7181 *
Japan	+ 81 3 4579 0333

* toll-free

Notice and Disclaimer

The data, data feeds, databases, reports, text, graphs, charts, images, videos, recordings, models, metrics, analytics, indexes, ratings, scores, cases, estimates, assessments, software, websites, products, services and other information and materials contained herein or delivered in connection with this notice (collectively, the "Information") are copyrighted, trade secrets (when not publicly available), trademarks and proprietary property of MSCI Inc. or its subsidiaries (collectively, "MSCI"), MSCI's licensors, direct or indirect suppliers and authorized sources, and/or any third party contributing to the Information (collectively, with MSCI, the "Information Providers"). All rights in the Information are reserved by MSCI and its Information Providers and user(s) shall not, nor assist others to, challenge or assert any rights in the Information.

Unless you contact MSCI and receive its prior written permission, you must NOT use the Information, directly or indirectly, in whole or in part (i) for commercial purposes, (ii) in a manner that competes with MSCI or impacts its ability to commercialize the Information or its services, (iii) to provide a service to a third party, (iv) to permit a third party to directly or indirectly access, use or resell the Information, (v) to redistribute or resell the Information in any form, (vi) to include the Information in any materials for public dissemination such as fund factsheets, market presentations, prospectuses, and investor information documents (e.g. KIDs or KIDs), (vii) to create or as a component of any financial products, whether listed or traded over the counter or on a private placement basis or otherwise, (viii) to create any indexes, ratings or other data products, including in derivative works combined with other indexes or data or as a policy, product or performance benchmarks for active, passive or other financial products, (ix) to populate a database, or (x) to train, use as an input to, or otherwise in connection with any artificial intelligence, machine learning, large language models or similar technologies except as licensed and expressly authorized under MSCI's AI Contracting Supplement at <https://www.msci.com/legal/supplemental-terms-for-client-use-of-artificial-intelligence>.

The intellectual property rights of MSCI and its Information Providers may not be misappropriated or used in a competitive manner through the use of third-party data or financial products linked to the Information, including by using an MSCI index-linked future or option in a competing third-party index to provide an exposure to the underlying MSCI index or by using an MSCI index-linked ETF to create a financial product that provides an exposure to the underlying MSCI index without obtaining a license from MSCI.

The user or recipient of the Information assumes the entire risk of any use it may make, permit or cause to be made of the Information. NONE OF THE INFORMATION PROVIDERS MAKES ANY EXPRESS OR IMPLIED WARRANTIES OR REPRESENTATIONS WITH RESPECT TO THE INFORMATION (OR THE RESULTS TO BE OBTAINED BY THE USE THEREOF), AND TO THE MAXIMUM EXTENT PERMITTED BY APPLICABLE LAW, EACH INFORMATION PROVIDER EXPRESSLY DISCLAIMS ALL IMPLIED WARRANTIES (INCLUDING ANY IMPLIED WARRANTIES OF ORIGINALITY, ACCURACY, TIMELINESS, SUITABILITY, NON-INFRINGEMENT, COMPLETENESS, MERCHANTABILITY AND FITNESS FOR A PARTICULAR PURPOSE) WITH RESPECT TO ANY OF THE INFORMATION. Without limiting any of the foregoing and to the maximum extent permitted by applicable law, in no event shall MSCI or any other Information Provider have any liability arising out of or relating to any of the Information, including for any direct, indirect, special, punitive, consequential (including lost profits) or any other damages, even if notified of the possibility of such damages. The foregoing shall not exclude or limit any liability that may not be applicable by law be excluded or limited.

The Information, including index construction, ratings, historical data, or analysis, is not a prediction or guarantee of future performance, and must not be relied upon as such. Past performance is not indicative of future results. The Information may contain back tested data. Back-tested performance based on back-tested data is not actual performance but is hypothetical. There are frequently material differences between back tested performance results and actual results subsequently achieved by any investment strategy. The Information may include "Signals," defined as quantitative attributes or the product of methods or formulas that describe or are derived from calculations using historical data. Signals are inherently backward-looking because of their use of historical data, and they are inherently inaccurate, not intended to predict the future and must not be relied upon as such. The relevance, correlations and accuracy of Signals frequently change materially over time.

The Information may include data relating to indicative prices, evaluated pricing or other information based on estimates or evaluations (collectively, "Evaluations") that are not current and do not reflect real-time traded prices. No evaluation method, including those used by the Information Providers, may consistently generate evaluations or estimates that correspond to actual "traded" prices of any relevant securities or other assets. Evaluations are subject to change at any time without notice and without any duty to update or inform you, may not reflect prices at which actual transactions or collateral calls may occur or have occurred. The market price of securities, financial instruments, and other assets can be determined only if and when executed in the market. There may be no, or may not have been any, secondary trading market for the relevant securities, financial instruments or other assets. Private capital, equity, credit and other assets and their prices may be assessed infrequently, may not be priced on a secondary market, and shall not be relied upon as an explicit or implicit valuation of a particular instrument. Any reliance on fair value estimates and non-market inputs introduces potential biases and subjectivity. Internal Rate of Return metrics are not fully representative without full disclosure of fund cash flows, assumptions, and time horizons.

The Information does not constitute, and must not be relied upon as, investment advice, credit ratings, or proxy advisory or voting services. None of the Information Providers, their products or services, are fiduciaries or make any recommendation, endorsement, or approval of any investment decision or asset allocation. Likewise, the Information does not represent an offer to sell, a solicitation to buy, or an endorsement of any security, financial product, instrument, investment vehicle, or trading strategy, whether or not linked to or in any way based on any MSCI index, rating, subcomponent, or other Information (collectively, "Linked Investments"). The Information should not be relied on and is not a substitute for the skill, judgment and experience of any user when making investment and other business decisions. MSCI is not responsible for any user's compliance with applicable laws and regulations. All Information is impersonal, not tailored to the needs of any person, entity or group of persons, not objectively verifiable in every respect, and may not be based on information that is important to any user.

It is not possible to invest in an index. Exposure to an asset class or trading strategy or other category represented by an index is only available through third party investable instruments (if any) based on that index. MSCI makes no assurance that any Linked Investments will accurately track index performance or provide positive investment returns. Index returns do not represent results of actual trading of investible assets/securities. MSCI maintains and calculates indexes but does not manage assets. The calculation of indexes and index returns may deviate from the stated methodology. Index returns do not reflect payment of any sales charges or fees an investor may pay to purchase securities underlying the index or Linked Investments. The imposition of these fees and charges would cause the performance of a Linked Investment to be different than the MSCI index performance.

Information provided by MSCI Solutions LLC and certain related entities ("MSCI Solutions"), including materials utilized in MSCI sustainability and climate products, have not been submitted to, nor received approval from any regulatory body. MSCI sustainability and climate offerings, research and data are produced by, and ratings are solely the opinion of MSCI Solutions. MSCI India Domestic ESG Ratings are produced by MSCI ESG Ratings and Research Private Limited and offered domestically in India. Other MSCI products and services may utilize information from MSCI Solutions, Barra LLC or other affiliates. More information can be found in the relevant methodologies on www.msci.com. MSCI Indexes are administered by MSCI Limited (UK) and MSCI Deutschland GmbH. No regulated use of any MSCI private real assets indexes in any jurisdiction is permitted without MSCI's express written authorization. The process for applying for MSCI's express written authorization can be found at: <https://www.msci.com/index-regulation>.

MSCI receives compensation in connection with licensing its indexes and other Information to third parties. MSCI Inc.'s revenue includes fees based on assets in Linked Investments. Information can be found in MSCI Inc.'s company filings on the Investor Relations section of msci.com. Issuers mentioned in MSCI Solutions materials or their affiliates may purchase research or other products or services from one or more MSCI affiliates, manage financial products such as mutual funds or ETFs rated by MSCI Solutions or its affiliates or are based on MSCI Indexes. Constituents of MSCI equity indexes are listed companies, which are included in or excluded from the indexes according to the application of the relevant index methodologies. Constituents in MSCI Inc. equity indexes may include MSCI Inc., clients of MSCI or suppliers to MSCI. MSCI Solutions has taken steps to mitigate potential conflicts of interest and safeguard the integrity and independence of its research and ratings.

MIFID2/MIFIR notice: MSCI Solutions does not distribute or act as an intermediary for financial instruments or structured deposits, nor does it deal on its own account, provide execution services for others or manage client accounts. No MSCI product or service supports, promotes or is intended to support or promote any such activity. MSCI Solutions is an independent provider of sustainability and climate data. All use of indicative prices for carbon credits must comply with any rules specified by MSCI. All transactions in carbon credits must be traded "over-the-counter" (i.e. not on a regulated market, trading venue or platform that performs a similar function to a trading venue) and result in physical delivery of the carbon credits.

You may not remove, alter, or obscure any attribution to MSCI or notices or disclaimers that apply to the Information. MSCI, Barra, RiskMetrics, and other MSCI brands and product names are the trademarks, service marks, or registered trademarks of MSCI or its subsidiaries in the United States and other jurisdictions. The Global Industry Classification Standard (GICS) was developed by and is the exclusive property of MSCI and S&P Dow Jones Indices. "Global Industry Classification Standard (GICS)" is a service mark of MSCI and S&P Dow Jones Indices. Terms such as including, includes, for example, such as and similar terms used herein are without limitation.

MSCI and its Information Providers may use automated technologies and artificial intelligence to help generate content and output incorporated in the Information.

Privacy notice: For information about how MSCI collects and uses personal data, please refer to our Privacy Notice at: <https://www.msci.com/privacy-pledge>. For copyright infringement claims contact us at dmca@msci.com. This notice is governed by the laws of the State of New York without regard to conflict of laws principles.