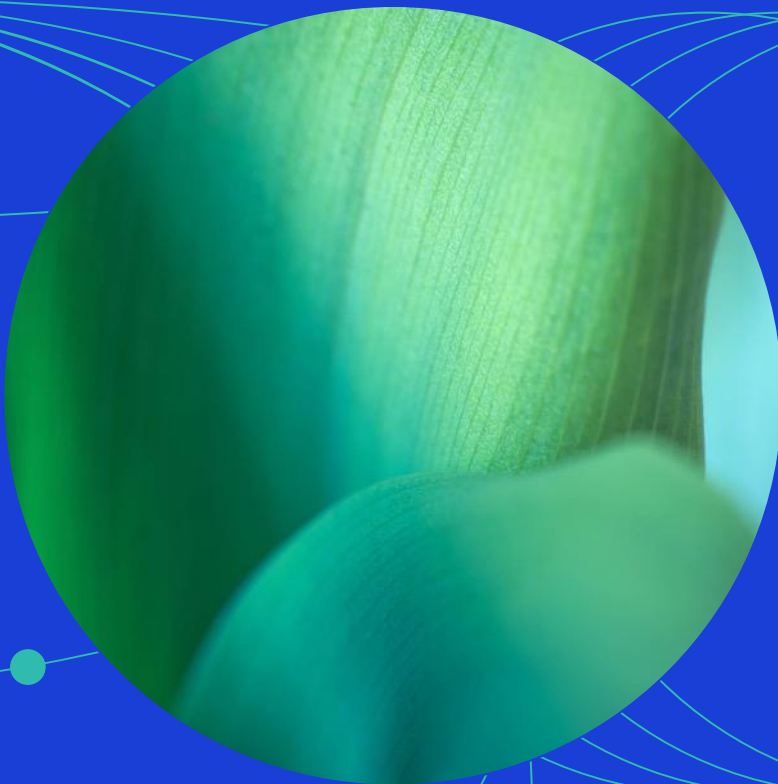




December 2025

MSCI ESG Selection P-Series 5% Issuer Capped Indexes Methodology



Contents

1	Introduction	4
2	Constructing the Indexes	5
2.1	Eligible Universe	5
2.1.1	ESG Ratings Eligibility.....	6
2.1.2	Controversies Score Eligibility	6
2.1.3	Controversial Business Involvement Criteria	6
2.2	Index Construction	7
2.3	Issuer Capping	8
2.4	Treatment of Unrated Companies	9
3	Maintaining the Indexes	10
3.1	Index Review	10
3.1.1	Updating the Eligible Universe	10
3.1.2	Ranking of Eligible Securities	10
3.1.3	Selection of Eligible Securities	11
3.2	Index Reviews	11
3.3	Monthly Review of Controversies	12
3.4	Capping Frequency	12
3.5	Ongoing Event Related Changes	12
4	MSCI Solutions.....	14
4.1	MSCI ESG Ratings.....	14
4.2	MSCI Controversies.....	14
4.3	MSCI Business Involvement Screening Research.....	14
4.4	MSCI Climate Change Metrics	14
4.4.1	Fossil Fuels and Power Generation Metrics	15
	Appendix I: Guidelines on Achieving the Target Sector Coverage of 50%	16
	Appendix II: Controversial Business Involvement Criteria for all Indexes except MSCI Latin America Selection 20/35 Capped Index.....	17
	Appendix III: Methodology Transitions.....	21

Appendix IV: Controversial Business Involvement Criteria for the MSCI Latin America Selection 20/35 Capped Index	23
Appendix V: Capping for the MSCI Latin America Selection 20/35 Index	26
Appendix VI: Capping Mechanism	27
Appendix VII: Methodology Set	28
Appendix VII: Changes to this Document	29
Contact Us	32

1 Introduction

The MSCI ESG Selection P-Series 5% Issuer Capped Indexes and the MSCI Latin America Selection 20/35 Index (the 'Indexes')¹ are designed to represent the performance of companies that are selected from an underlying index based on Environmental, Social and Governance (ESG) criteria. These criteria exclude constituents based on involvement in specific business activities, as well as ESG ratings and exposure to controversies. The Indexes are derived from underlying MSCI indexes ("Parent Indexes") and aim to achieve sector weights that reflect the sector weights of the corresponding Parent Indexes. The Index construction targets 50% free float-adjusted market capitalization coverage of each Global Industry Classification Standard (GICS®)² sector by selecting constituents primarily based on criteria including the ESG rating and the company's industry-adjusted ESG score.

All Indexes except the MSCI Latin America Selection 20/35 Index apply an issuer cap to avoid excess concentration. This cap aims to limit an issuer's weight to either 5% or its weight in the respective Parent Index (whichever is greater).

The MSCI Latin America Selection 20/35 Index is capped according to the 20/35 capping rules defined in the MSCI Capped Indexes methodology.

¹ The Indexes are governed by a set of methodology and policy documents ("Methodology Set"), including the present index methodology document. Please refer to Appendix VII for more details.

² GICS is the global industry classification standard jointly developed by MSCI and S&P Global Market Intelligence

2 Constructing the Indexes

The Indexes use company ratings and research provided by MSCI Solutions³ to determine eligibility for Index inclusion.

The Indexes and their corresponding Parent Indexes are listed in the table below. The MSCI Latin America Selection 20/35 Index is constructed with the same rules as the other Indexes except it applies different controversial business screens as detailed in Appendix IV and capping as detailed in Appendix V.

Index Name	Parent Index
MSCI World ESG Selection P-Series 5% Issuer Capped Index	MSCI World Index
MSCI USA ESG Selection P-Series 5% Issuer Capped Index	MSCI USA Index
MSCI Europe ESG Selection P-Series 5% Issuer Capped Index	MSCI Europe Index
MSCI EM ex China ESG Selection P-Series 5% Issuer Capped Index	MSCI EM ex China Index
MSCI China ESG Selection P-Series 5% Issuer Capped Index	MSCI China Index
MSCI AC Far East ex Japan ESG Selection P-Series 5% Issuer Capped Index	MSCI AC Far East ex Japan Index
MSCI Europe ex Switzerland ESG Selection P-Series 5% Issuer Capped Index	MSCI Europe ex Switzerland Index
MSCI Europe ex EMU ESG Selection P-Series 5% Issuer Capped Index	MSCI Europe ex EMU Index
MSCI EMU ESG Selection P-Series 5% Issuer Capped Index	MSCI EMU Index
MSCI EM ESG Selection P-Series 5% Issuer Capped Index	MSCI Emerging Markets Index
MSCI Latin America Selection 20/35 Capped Index ⁴	MSCI Latin America Index

2.1 Eligible Universe

The Eligible Universe is defined by applying exclusions based on the eligibility criteria provided below.

Please refer to Section 4 for further information regarding the ESG and climate data used in the Indexes that MSCI Limited sources from MSCI Solutions LLC, a separate subsidiary of MSCI Inc. MSCI Solutions is solely responsible for the creation, determination, and management of such data. MSCI Limited and MSCI Deutschland GmbH are the benchmark administrators for the MSCI indexes.

⁴ Please refer to Appendix IV for more details on the controversial business involvement criteria for the MSCI Latin America Selection 20/35 Capped Index.

2.1.1 ESG Ratings Eligibility

The Indexes use MSCI ESG Ratings to identify companies that have demonstrated an ability to manage their ESG risks and opportunities. Companies are required to have an MSCI ESG Rating of 'BB' or above to be eligible for inclusion in the Indexes.

2.1.2 Controversies Score Eligibility

The Indexes use MSCI Controversies Scores to identify companies that are involved in very serious controversies involving the environmental, social, or governance impact of their operations and/or products and services. Companies are required to have an MSCI Controversies Score of 3 or above to be eligible for inclusion in the Indexes.

2.1.3 Controversial Business Involvement Criteria

The Indexes use MSCI Business Involvement Screening Research and MSCI Climate Change Metrics to identify companies that are involved in the following business activities. Companies that meet the business involvement criteria are excluded from the Indexes. For all Indexes other than the MSCI Latin America Selection 20/35 Index, please refer to Appendix II for further details. For the MSCI Latin America Selection 20/35 Index please refer to Appendix IV for further details.

- Controversial Weapons
- Nuclear Weapons
- Civilian Firearms
- Alcohol
- Conventional & Aggregate Weapons
- Gambling
- Nuclear Power
- Unconventional Oil & Gas
- Tobacco
- Palm Oil
- Arctic Oil & Gas
- Thermal Coal
 - Thermal Coal Mining
 - Thermal Coal Distribution
 - Thermal Coal Power Generation
 - Thermal Coal Reserves
- Fossil Fuels Power Generation
- Oil & Gas Activities

2.2 Index Construction

The Indexes select eligible constituents targeting 50% of the free float-adjusted market capitalization within each Global Industry Classification Standard (GICS®) sector of the underlying Parent Index as detailed in Appendix I.

The MSCI USA ESG Selection P-Series 5% Issuer Capped Index, and MSCI China ESG Selection P-Series 5% Issuer Capped Index and MSCI Latin America Selection 20/35 Index are constructed by applying the above methodology on their respective Parent Indexes.

The MSCI World ESG Selection P-Series 5% Issuer Capped Index, MSCI EM ex China ESG Selection P-Series 5% Issuer Capped Index and MSCI EM ESG Selection P-Series 5% Issuer Capped Index are constructed by applying the above methodology at the regional level of their corresponding Parent Indexes, and the regions are then aggregated together.

The following regions are used to construct the MSCI World ESG Selection P-Series 5% Issuer Capped Index:

Region	Regional Parent Index
Developed Asia Pacific	MSCI Pacific Index
Developed Europe & Middle East	MSCI Europe & Middle East Index
Canada	MSCI Canada Index
USA	MSCI USA Index

The following regions are used to construct the MSCI EM (Emerging Markets) ESG Selection P-Series 5% Issuer Capped⁵ Index:

Region	Regional Parent Index
Emerging Asia	MSCI Emerging Markets Asia Index
Emerging Europe, Middle East & Africa	MSCI Emerging Markets Europe, Middle East & Africa Index
Emerging Latin America	MSCI Emerging Markets Latin America Index

The following regions are used to construct the MSCI EM ex China ESG Selection P-Series 5% Issuer Capped Index:

⁵ The MSCI Emerging Markets ESG Selection P-Series Issuer Capped Index started applying the Selection P-Series 5% Issuer Capped methodology as of the February 2024 Index Review,

Region	Regional Parent Index
Emerging Asia ex China	MSCI Emerging Markets Asia ex China Index
Emerging Europe, Middle East & Africa	MSCI Emerging Markets Europe, Middle East & Africa Index
Emerging Latin America	MSCI Emerging Markets Latin America Index

The constituents of the MSCI Europe ESG Selection P-Series 5% Issuer Capped Index, MSCI Europe ex Switzerland ESG Selection P-Series 5% Issuer Capped Index, and MSCI Europe ex EMU ESG Selection P-Series 5% Issuer Capped Index are determined by selecting securities from the corresponding region in the MSCI World ESG Selection P-Series 5% Issuer Capped Index.

In order to construct the MSCI AC Far East ex Japan ESG Selection P-Series 5% Issuer Capped Index, at each index review, the following three MSCI ESG Selection P-Series 5% Issuer Capped Indexes are combined and then constituents of MSCI AC Far East ex Japan P-Series 5% Issuer Capped Index are determined by selecting securities that belong to the MSCI AC Far East ex Japan Index:

- World
- EM ex China
- China

2.3 Issuer Capping

The final step in the construction of the Indexes is the application of issuer capping, as outlined below:

- At each Quarterly index Review, issuer capping is based on the following two conditions:
Issuer Capping = Max (5%, Issuer Weight in the Parent Indexes)
- Within each GICS sector, the combined excess weight of all capped issuers is redistributed to uncapped issuers across the GICS sectors in the Eligible Universe. The redistribution is applied to all uncapped issuers in proportion of their free float market capitalization, adjusted by the issuer capping described above.
- The mechanism for achieving the Issuer capping along with excess weight re-distribution is highlighted in Appendix VI.

This step aims to reduce active sector weights by aligning sector weights in the Indexes with their corresponding regional Parent Index.

The above issuer capping is not applied for the MSCI Latin America Selection 20/35 Index. The capping for the MSCI Latin America 20/35 Index is described in Appendix V.

2.4 Treatment of Unrated Companies

Companies not assessed by MSCI Solutions on data for any of the following MSCI sustainability and climate products are not eligible for inclusion in the Indexes.

- MSCI ESG Ratings
- MSCI Controversies
- MSCI Business Involvement Screening Research
- MSCI Climate Change Metrics

3 Maintaining the Indexes

3.1 Index Review

The Indexes are reviewed on an annual basis in May to coincide with the May Index Review of the Parent Index ("Annual Index Review"), and the changes are implemented at the end of May. In general, the pro forma Indexes are announced nine business days before the effective date.

In general, MSCI uses MSCI Solutions data⁶ (including MSCI ESG Ratings, MSCI Controversies Scores, MSCI Business Involvement Screening Research and MSCI Climate Change Metrics) as of the end of the month preceding the Index Reviews for the rebalancing of the Indexes. For some securities, such data may not be published by MSCI Solutions by the end of the month preceding the Index Review. For such securities, MSCI will use ESG data published after the end of month, when available, for the rebalancing of the Indexes.

At each Annual Index Review, the Eligible Universe is updated, and the composition of the Index is reassessed in order to target 50% free float-adjusted cumulative market capitalization of each sector of the Parent Index.

3.1.1 Updating the Eligible Universe

The Eligible Universe is updated during each Annual Index Review.

Companies that are currently not constituents of the Indexes are evaluated using the same eligibility criteria described in Section 2.1

Existing constituents of the Indexes are maintained in the Eligible Universe if they meet all the following conditions:

- MSCI ESG Rating of 'BB' or above
- MSCI Controversies Score of 1 or above
- Not screened by the business involvement criteria described in Section 2.1.3

3.1.2 Ranking of Eligible Securities

For each sector, eligible securities of the regional Parent Index as described in Section 2.2 are ranked based on the following criteria:

- ESG Rating
- Current Index membership (existing constituents above non-constituents of the Indexes)
- Industry-adjusted ESG scores
- Decreasing free float-adjusted market capitalization

See Section 4 for details of data sourced from MSCI Solutions used in the Indexes.

3.1.3 Selection of Eligible Securities

For each sector, eligible securities of the regional Parent Index are then selected from the ranked Eligible Universe in the following order until the target 50% coverage by cumulative free float-adjusted market capitalization is reached:

- Securities in the top 35% cumulative free float-adjusted market capitalization coverage of the ranked universe, including the first security that increases the cumulative coverage above 35%
- 'AAA' rated securities in the top 50% cumulative free float-adjusted market capitalization coverage of the ranked universe, including the first security that increases the cumulative coverage above 50%
- Current Index constituents in the top 65% cumulative free float-adjusted market capitalization coverage of the ranked universe, including the first security that increases the cumulative coverage above 65% if that security is a current index constituent
- Remaining eligible securities in the ranked universe

Please see Appendix I for additional details on the ranking and selection rules.

3.2 Index Reviews

The Indexes are also reviewed on a quarterly basis in February, August and November to coincide with the regular Index Reviews of the Parent Indexes. The changes are implemented at the end of February, August and November. The pro forma Indexes are in general announced nine business days before the effective date.

For the Quarterly Index Reviews, MSCI ESG Ratings, MSCI Controversies Score assessments and MSCI BISR data are taken as of the end of the month preceding the Index Reviews, i.e., January, July and October. For some securities, this data may not be published by MSCI Solutions by the end of the month preceding the Index Review. For such securities, MSCI will use ESG data published after the end of month, when available, for the rebalancing of the Indexes.

At the Quarterly Index Reviews, existing constituents are deleted from the Indexes if they do not meet the eligibility criteria described in Section 2.1.1. Existing constituents that meet the eligibility criteria are retained in the index.

Additions, from the eligible securities as per Section 2.1, are made only to those sectors where the current market capitalization coverage is less than 45%, until the 50% target is reached.

Market price movements may cause small deviations in the sector coverage between two Index Reviews. Therefore, in order to minimize turnover, a buffer of 10% is used on the target coverage of 50% to define under-representation.

3.3 Monthly Review of Controversies

Index constituents are reviewed on a monthly basis for the involvement in controversies⁷. Existing constituents will be deleted if they are assessed as having involvement in controversies that are classified as Red Flags (MSCI Controversies Score of 0). A Red Flag indicates an ongoing, Very Severe controversy implicating a company directly through its actions, products, or operations. Existing Index constituents with missing MSCI Controversies Scores are not deleted during Monthly Review of Controversies.

MSCI uses MSCI Controversies data as of the end of the month preceding the review (e.g., end of June data for the July monthly review). For some securities, such data may not be published by MSCI Solutions by the end of the month preceding the review. For such securities, MSCI will use ESG data published after the end of month, when available, for the monthly review of the Index.

The pro forma indexes are generally announced nine business days before the effective date.

3.4 Capping Frequency

For all Indexes apart from the MSCI Latin America Selection 20/35 Index, Issuer capping of 5% is applied, where applicable, in the February, May, August and November, coinciding with the index reviews of the MSCI Global Investable Market Indexes. For further details on Issuer capping for the MSCI Latin America Selection 20/35 Index please refer to Appendix V.

3.5 Ongoing Event Related Changes

The following section briefly describes the treatment of common corporate events within the Indexes.

No new securities will be added (except where noted below) to the Index between Index Reviews. For cases where additions are noted below, securities will be added to the index only if added to the Parent Index.

Parent Index deletions will be reflected simultaneously.

There are no deletions from the Indexes between Index Reviews on account of a security becoming ineligible because of MSCI ESG Rating downgrade and/or decrease in MSCI Controversies Score and/or change in the controversial business involvement screens.

Event Type

New additions to the Parent Index

Event Details

New securities added to the Parent Index (such as IPOs, other early inclusions and migrations from a different size-segment) will be added to the Indexes on the date of security inclusion only if they meet the eligibility criteria described in Section 2.1 and the market capitalization

⁷ The monthly review of controversies was implemented effective November 1, 2023 and the proforma indexes were announced nine business days before the effective date.

Spin-Offs

coverage of the sector to which the security belongs is less than 45%.

All securities created as a result of the spin-off of an existing Index constituent will not be added to the Index at the time of event implementation if the spin-off security is also added to the Parent Index. Reevaluation for inclusion in the Index will occur at the subsequent Index Review.

Merger/Acquisition

If an existing Index constituent is acquired by a non-Index constituent, the existing constituent will be deleted from the Index and the acquiring non-constituent will not be added to the Index.

Changes in Security Characteristics

A security will continue to be an Index constituent if there are changes in characteristics (country, sector, size segment, etc.). Reevaluation for continued inclusion in the Index will occur at the subsequent Index Review.

Further detail and illustration regarding specific treatment of corporate events relevant to this Index can be found in the MSCI Corporate Events Methodology book.

The MSCI Corporate Events methodology book is available at: <https://www.msci.com/index-methodology>.

4 MSCI Solutions

The Indexes are products of MSCI Inc. that utilize information such as company ratings and research produced and provided by MSCI Solutions LLC (MSCI Solutions), a subsidiary of MSCI Inc. In particular, the Indexes use the following MSCI sustainability and climate products: MSCI ESG Ratings, MSCI Controversies, MSCI Business Involvement Screening Research and MSCI Climate Change Metrics. MSCI Indexes are administered by MSCI Limited and MSCI Deutschland GmbH.

4.1 MSCI ESG Ratings

MSCI ESG Ratings aim to measure entities' management of environmental, social and governance risks and opportunities. MSCI ESG Ratings use a weighted average key issue calculation that is normalized by industry to arrive at an industry-adjusted ESG score (0-10), which is then translated to a seven-point scale from 'AAA' to 'CCC', indicating how an entity manages relevant key issues relative to industry peers.

The MSCI ESG Ratings methodology can be found at: <https://www.msci.com/legal/disclosures/esg-disclosures>.

4.2 MSCI Controversies

MSCI Controversies provide assessments of controversies concerning the potential negative environmental, social, and/or governance impact of company operations, products and services. The evaluation framework used in MSCI Controversies is designed to be consistent with international norms represented by the UN Declaration of Human Rights, the ILO Declaration on Fundamental Principles and Rights at Work, and the UN Global Compact. MSCI Controversies Score falls on a 0-10 scale, with "0" being the most severe controversy.

The MSCI Controversies methodology can be found at: <https://www.msci.com/legal/disclosures/esg-disclosures>

4.3 MSCI Business Involvement Screening Research

MSCI Business Involvement Screening Research (BISR) aims to enable institutional investors to manage environmental, social and governance (ESG) standards and restrictions reliably and efficiently.

The MSCI Business Involvement Screening Research methodology can be found at: <https://www.msci.com/legal/disclosures/esg-disclosures>.

4.4 MSCI Climate Change Metrics

MSCI Climate Change Metrics provide climate data & tools to support institutional investors seeking to integrate climate risk & opportunities into their investment strategy and processes. This includes investors seeking to achieve a range of objectives, including measuring and reporting on climate risk

exposure, implementing low carbon and fossil fuel-free strategies, alignment with temperature pathways and factoring climate change research into their risk management processes, in particular through climate scenario analysis for both transition and physical risks.

For more details on MSCI Climate Change Metrics, please refer to:

<https://www.msci.com/legal/disclosures/climate-disclosures>.

4.4.1 Fossil Fuels and Power Generation Metrics

MSCI Solutions identifies companies involved in fossil fuel-related assets and activities including fossil fuel reserves, resource extraction, power generation and generation capacity, revenue from such assets and activities and capital investments in such assets and activities. The metrics are based on disclosed activities, disclosed revenue and estimates of revenue that are extrapolated from company disclosures and eligible third-party sources (such as NGOs).

Appendix I: Guidelines on Achieving the Target Sector Coverage of 50%

The Indexes target 50% coverage of the free float-adjusted market capitalization of each GICS sector of the regional Parent Index. The underlying principle in the construction of the indexes is to achieve cumulative sector coverage closest to 50%, while aiming to maintain index stability.

The following guidelines are used in achieving the target cumulative sector coverage of 50%:

- For each sector, the eligible companies of the regional Parent Index are first ranked based on the company level ESG Rating.
- In case two companies have the same ESG Ratings, the existing index constituent is given priority to maintain index stability. Between the two existing constituents with the same ESG Ratings the company with the higher industry-adjusted ESG score is given priority. For two existing index constituents with the same industry-adjusted ESG score, the security with the largest free float-adjusted market capitalization is given priority.
- The cumulative sector coverage at each rank is calculated.
- In each sector, companies are selected as per the rules mentioned in Section 3.1.2 until the cumulative sector coverage crosses 50% or there are no eligible securities left to be selected.
- MSCI defines the company that increases the cumulative sector coverage above 50% as the “marginal company”.
 - If the marginal company is a current index constituent, then it is always selected.
 - If the marginal company is not a current index constituent, then it is selected only if the cumulative sector coverage with the marginal company is closer to 50% compared to the cumulative sector coverage without the marginal company.
- The minimum cumulative sector coverage is set to 45%.
 - The marginal company is always selected if this is required to achieve cumulative sector coverage of 45%.
- Securities which are ineligible as per Section 2 will not be selected even if the cumulative sector coverage after selection of all eligible securities is below 50%.

Appendix II: Controversial Business Involvement Criteria for all Indexes except MSCI Latin America Selection 20/35 Capped Index

Companies, whose activities meet the following values and climate-based criteria, as evaluated by MSCI Solutions, are excluded from the Indexes:

Values-based Exclusion Criteria

- **Controversial Weapons**
 - All companies with any tie to Controversial Weapons (cluster munitions, landmines, depleted uranium weapons, biological/chemical weapons, blinding lasers, non-detectable fragments and incendiary weapons), as defined by the methodology of the MSCI Global Ex-Controversial Weapons Indexes available at <https://www.msci.com/index-methodology>.
- **Nuclear Weapons**
 - All companies that manufacture nuclear warheads and/or whole nuclear missiles.
 - All companies that manufacture components that were developed or are significantly modified for exclusive use in nuclear weapons (warheads and missiles).
 - All companies that manufacture or assemble delivery platforms that were developed or significantly modified for the exclusive delivery of nuclear weapons.
 - All companies that provide auxiliary services related to nuclear weapons.
 - All companies that manufacture components that were not developed or not significantly modified for exclusive use in nuclear weapons (warheads and missiles) but can be used in nuclear weapons.
 - All companies that manufacture or assemble delivery platforms that were not developed or not significantly modified for the exclusive delivery of nuclear weapons but have the capability to deliver nuclear weapons.
 - All companies that manufacture components for nuclear-exclusive delivery platforms.
- **Civilian Firearms**
 - All companies classified as “Producer” of firearms and small arms ammunitions for civilian markets. It does not include companies that cater to the military, government, and law enforcement markets.
 - All companies deriving 5% or more aggregate revenue from the production and distribution (wholesale or retail) of firearms or small arms ammunition intended for civilian use.
- **Alcohol**
 - All companies deriving 10% or more revenue from the production of alcohol-related products.
- **Conventional Weapons & Aggregate Weapons**
 - All companies deriving 10% or more revenue from the production of conventional weapons and components.
 - All companies deriving 10% or more aggregate revenue from conventional, controversial and nuclear weapons based on the following categories:

- Companies involved in the production of conventional weapons, components for such products or support systems and services for such products.
- Companies involved in the production of biological or chemical weapons, components for such products.
- Companies involved in the production of blinding laser, incendiary or non-detectable fragments weapons in its most recently completed fiscal year.
- Companies involved production of nuclear weapons, exclusive and dual-use delivery platform capable to deliver such products, intended and dual-use components of such products, services provided for such products.
- **Gambling**
 - All companies deriving 10% or more revenue from gambling operations, including online or mobile gambling, and supporting activities.
- **Nuclear Power**
 - All companies deriving 10% or more revenue from the ownership or operation of nuclear power plants.
- **Tobacco**
 - All companies that manufacture tobacco products, such as cigars, blunts, cigarettes, e-cigarettes, inhalers, beedis, kreteks, smokeless tobacco, snuff, snus, dissolvable and chewing tobacco. This also includes companies that grow or process raw tobacco leaves.
 - All companies deriving 5% or more reported revenue (or, where not disclosed, maximum estimated revenue) from the production, distribution or retail of tobacco products, as a licensor of brand names for tobacco products, or as a supplier for tobacco products as a percentage of total revenue in its most recently completed fiscal year. Tobacco products include nicotine-containing products, including traditional and alternative tobacco smoking products.
- **Palm Oil**
 - All companies deriving 5% or more revenue from the production of Palm Oil.

Climate Change-based Exclusion Criteria

- **Arctic Oil & Gas**
 - All companies deriving 5% or more aggregate revenue from arctic oil and arctic gas production. The definition of Arctic is geographical and includes production activities north of the 66.5 latitude. This includes offshore or onshore oil and gas production
- **Unconventional Oil & Gas**
 - All companies deriving 5% or more revenue (either reported or estimated) from unconventional oil and gas extraction, this includes revenue from oil sands, oil shale (kerogen-rich deposits), shale gas, shale oil, coal seam gas, and coal bed methane. It does not cover all types of conventional oil and gas production including Arctic onshore/offshore, deep water, shallow water and other onshore/offshore.

- **Thermal Coal**

- **Thermal Coal Mining:** All companies deriving 1% or more revenue (either reported or estimated) from the mining of thermal coal (including lignite, bituminous, anthracite and steam coal) and its sale to external parties. It excludes revenue from metallurgical coal, coal mined for internal power generation (e.g. in the case of vertically integrated power producers), intra-company sales of mined thermal coal, and revenue from coal trading (either reported or estimated).
- **Thermal Coal Distribution:** All companies with evidence of thermal coal distribution or transport involvement. This includes transport of thermal coal by road, rail, shipping or air, and physical trading of thermal coal. It does not include involvement in storage of thermal coal, or involvement in metallurgical coal-related activities.
- **Thermal Coal Power Generation:**
 - All companies deriving 5% or more revenue (either reported or estimated) from thermal coal-based power generation.
 - All companies that are deriving 50% or more power⁸ from thermal coal.
- **Thermal Coal Reserves:** All companies providing evidence of owning thermal coal including those that own less than 50% of a reserves field. Evidence of owning reserves includes companies providing the exact volume of reserves, and companies making a statement about their ownership of reserves.

- **Fossil Fuel Power Generation**

- All companies deriving 50% or more revenue from fossil fuel based power generation.⁹

- **Oil Activities¹⁰**

- All companies that derive 10% or more aggregate revenue (either reported or estimated) from oil-related activities, including:
 - Extraction and production of oil and natural gas liquids
 - Refining of oil fuels
 - Oil and oil products pipelines or natural gas liquids pipelines
 - Transportation of oil and oil products
 - Distribution of oil and related products
 - Exploration as a service to the oil and natural gas industries
 - Drilling wells as a service to the exploration and production of oil and natural gas

⁸ As per https://www.ipcc.ch/site/assets/uploads/2018/02/ipcc_wg3_ar5_chapter7.pdf, thermal coal based power generation has median lifecycle emissions exceeding 100gCO₂/kWh.

⁹ As per https://www.ipcc.ch/site/assets/uploads/2018/02/ipcc_wg3_ar5_chapter7.pdf, thermal coal based power generation, liquid fuel based power generation and natural gas based power generation have median lifecycle emissions exceeding 100gCO₂/kWh.

¹⁰ The combined oil & gas screen is applied for companies where the disaggregated oil/gas revenue data underlying the separate oil and gas screens is not available or is not consistent. The combined oil & gas screen excludes all companies deriving 10% or more aggregate revenue from oil and gas related activities, including distribution/retail, equipment and services, extraction and production, pipelines and transportation, and refining but excluding biofuel production and sales and trading activities. For further details, please refer to Appendix II of the MSCI EU CTB/PAB Index Framework at:

<https://www.msci.com/index/methodology/latest/EUCTBPABIndexFramework>

- **Gas Activities¹¹**

- All companies that derive 50% or more aggregate revenue (either reported or estimated) from gas-related activities, including:
 - Extraction and production of natural gas
 - Processing of natural gas fuels
 - Natural gas pipelines
 - Transportation of natural gas
 - Distribution of gas and related products
 - Exploration as a service to the oil and natural gas industries
 - Drilling wells as a service to the exploration and production of oil and natural gas

¹¹ As noted in footnote 12

Appendix III: Methodology Transitions

The methodology transition for the MSCI ESG Leaders Indexes and the MSCI ESG Selection P-Series 5% Issuer Capped Indexes is detailed in this section.

June 2013

Prior to the May 2013 Index Review, the MSCI ESG Leaders Indexes were constructed using Global Socrates ESG Ratings. Effective May 2013 Index Review, MSCI ESG Leaders Indexes transitioned to MSCI ESG IVA Ratings. Any company that had an ESG Rating of 'CCC' or lower was not eligible for inclusion in the MSCI ESG Leaders Indexes. The MSCI ESG Leaders Indexes were constructed by targeting 50% of the free float-adjusted market capitalization of each GICS sector of the underlying MSCI regional ESG Leaders Index.

June 2016

Effective May 2016 Index Review, the MSCI ESG Leaders Indexes reflected enhancements to the MSCI Controversies (formerly known as MSCI Impact Monitor). The details of the changes are as given below.

The changes to MSCI Controversies included adjusting the scoring model to align the scores with individual controversy case levels, including the introduction of an Orange flag, and the removal of specific controversial business involvement (CBI) criteria from the model to refocus the Controversies scores on event-driven controversies.

MSCI implemented the following changes to the MSCI ESG Leaders Indexes methodology effective June 1, 2016 to maintain consistency with the existing index construction objectives:

1. As per the old MSCI ESG Impact Monitor methodology, securities which had an Impact Monitor score of 0 and 1 had a Red controversy flag. Under the new methodology, only securities with a controversies score of 0 have a Red controversy flag. For indexes where constituents were ineligible to be included in the index if their Impact Monitor score was 0 or 1 (current Red controversy flag), the exclusion criteria was changed to Controversies score = 0 in order to continue to only exclude securities with Red controversy flag in the MSCI ESG Leaders Indexes.
2. MSCI Impact Monitor earlier incorporated exclusion rules based on controversial business involvement criteria related to alcohol, tobacco, gambling, nuclear power, conventional weapons and controversial weapons. Therefore, additional exclusion rules based on the controversial business involvement criteria related to alcohol, tobacco, gambling, nuclear power, conventional weapons and controversial weapons that were incorporated in the old MSCI Impact Monitor scores were introduced as part of the methodology of the MSCI ESG Leaders Indexes. The details of the exclusion rules are mentioned in Appendix II.

June 2018

Prior to the May 2018 Annual Index Review, existing constituents of the MSCI ESG Leaders Indexes could be maintained in the eligible universe if their MSCI ESG Rating was 'B' or above. Effective from the May 2018 Annual Index Review, existing constituents are required to have MSCI ESG Rating of 'BB' or above in order to be maintained in the eligible universe.

December 2020

Effective from the November 2020 Index Review, the controversial business involvement criteria have been enhanced to reflect the framework designed by MSCI Solutions to define significant involvement in controversial activities. According to this framework, there are four restrictiveness levels: Most Restrictive, Highly Restrictive, Moderately Restrictive, Least Restrictive. Also, screens for Fossil Fuel Extraction and Thermal Coal Power were added.

June 2022

The constituents of the European region of the MSCI EMU ESG Selection P-Series 5% Issuer Capped Index had differences compared to the constituents of the MSCI Europe ESG Selection P-Series 5% Issuer Capped Index prior to June 2022. The differences were due to a different threshold being applied till March 2020 for the Thermal Coal Power screen and differences in the rules for existing constituents versus non-constituents. Post June 2022, the constituents from the European region of the MSCI EMU ESG Selection P-Series 5% Issuer Capped Index are aligned with the constituents of the MSCI Europe ESG Selection P-Series 5% Issuer Capped Index.

March 2024

The MSCI EM ESG Leaders 5% Issuer Capped Index was transitioned to the MSCI EM ESG Selection P-Series 5% Issuer Capped Index at the March 2024 Index Review. Prior to March 1, 2024, the Index has the same constituents and weight as the MSCI EM ESG Leaders 5% Issuer Capped Index

Appendix IV: Controversial Business Involvement Criteria for the MSCI Latin America Selection 20/35 Capped Index

Companies whose activities meet the following values and climate-based criteria, as evaluated by MSCI Solutions, are excluded from the Indexes:

Values-based Exclusion Criteria

- **Controversial Weapons**
 - All companies with any tie to Controversial Weapons (cluster munitions, landmines, depleted uranium weapons, biological/chemical weapons, blinding lasers, non-detectable fragments and incendiary weapons), as defined by the methodology of the MSCI Ex-Controversial Weapons Indexes available at <https://www.msci.com/index/methodology/latest/XCW>
- **Nuclear Weapons**
 - All companies that manufacture nuclear warheads and/or whole nuclear missiles
 - All companies that manufacture components that were developed or are significantly modified for exclusive use in nuclear weapons (warheads and missiles)
 - All companies that manufacture or assemble delivery platforms that were developed or significantly modified for the exclusive delivery of nuclear weapons
 - All companies that provide auxiliary services related to nuclear weapons
 - All companies that manufacture components that were not developed or not significantly modified for exclusive use in nuclear weapons (warheads and missiles) but can be used in nuclear weapons
 - All companies that manufacture or assemble delivery platforms that were not developed or not significantly modified for the exclusive delivery of nuclear weapons but have the capability to deliver nuclear weapons
 - All companies that manufacture components for nuclear-exclusive delivery platforms
- **Civilian Firearms**
 - All companies classified as “Producer” of firearms and small arms ammunitions for civilian markets. It does not include companies that cater to the military, government, and law enforcement markets.
 - All companies deriving 5% or more aggregate revenue from the production and distribution (wholesale or retail) of firearms or small arms ammunition intended for civilian use.
- **Alcohol**
 - All companies that derive 10% or more revenue from the production of alcohol-related products.
- **Conventional & Aggregate Weapons**
 - All companies deriving 10% or more revenue from the production of conventional weapons and components

- All companies deriving 10% or more aggregate revenue from conventional, controversial and nuclear weapons based on the following categories:
 - Companies involved in the production of conventional weapons, components for such products or support systems and services for such products.
 - Companies involved in the production of biological or chemical weapons, components for such products.
 - Companies involved in the production of blinding laser, incendiary or non-detectable fragments weapons in its most recently completed fiscal year.
 - Companies involved production of nuclear weapons, exclusive and dual-use delivery platform capable to deliver such products, intended and dual-use components of such products, services provided for such products.
- **Gambling**
 - All companies deriving 10% or more revenue from ownership of operation of gambling-related business activities
- **Nuclear Power**
 - All companies deriving 10% or more revenue from the ownership or operation of nuclear power plants
- **Tobacco**
 - All companies that manufacture tobacco products, such as cigars, blunts, cigarettes, e-cigarettes, inhalers, beedis, kreteks, smokeless tobacco, snuff, snus, dissolvable and chewing tobacco. This also includes companies that grow or process raw tobacco leaves.
 - All companies deriving 5% or more reported revenue (or, where not disclosed, maximum estimated revenue) from the production, distribution or retail of tobacco products, as a licensor of brand names for tobacco products, or as a supplier for tobacco products as a percentage of total revenue in its most recently completed fiscal year. Tobacco products include nicotine-containing products, including traditional and alternative tobacco smoking products.
- **Palm Oil**
 - All companies deriving 5% or more revenue from the production of Palm Oil.
- **Arctic Oil & Gas**
 - All companies deriving 5% or more aggregate revenue from arctic oil and arctic gas production. The definition of Arctic is geographical and includes production activities north of the 66.5 latitude. This includes offshore or onshore oil and gas production

Climate Change-based Exclusion Criteria

- **Fossil Fuel Extraction**
 - All companies deriving 5% or more aggregate revenue (either reported or estimated) from thermal coal mining and unconventional oil and gas extraction.

- **Thermal Coal Mining:** Revenue from the mining of thermal coal (including lignite, bituminous, anthracite and steam coal) and its sale to external parties. It does not cover revenue from metallurgical coal; coal mined for internal power generation (e.g. in the case of vertically integrated power producers); intra-company sales of mined thermal coal; and revenue from coal trading
- **Unconventional Oil & Gas Extraction:** Revenue from oil sands, oil shale (kerogen-rich deposits), shale gas, shale oil, coal seam gas, and coal bed methane. It does not cover all types of conventional oil and gas production including Arctic onshore/offshore, deep water, shallow water and other onshore/offshore.

- **Thermal Coal**

- **Thermal Coal Power Generation:**

- All companies deriving 5% or more revenue (either reported or estimated) from thermal coal-based power generation.
 - All companies that are deriving 50% or more power¹² from thermal coal.

- **Thermal Coal Reserves:** All companies providing evidence of owning thermal coal including those that own less than 50% of a reserves field. Evidence of owning reserves includes companies providing the exact volume of reserves, and companies making a statement about their ownership of reserves.

¹² As per https://www.ipcc.ch/site/assets/uploads/2018/02/ipcc_wg3_ar5_chapter7.pdf, thermal coal based power generation has median lifecycle emissions exceeding 100gCO₂/kWh.

Appendix V: Capping for the MSCI Latin America Selection 20/35 Index

The MSCI Latin America Selection 20/35 Index will apply a 20/35 capping on all group entities as per the MSCI Capped Indexes Methodology¹³.

The 20/35 Capping constrains the weight of the largest group entity at 35%, and all other group entities at 20%, with a buffer of 10% applied on these limits at each index rebalancing. The 20/35 Capping is applied quarterly and changes are implemented as of the close of the last business day of each February, May, August and November.

The 20/35 Capping is applied on a quarterly and on an “as needed” basis. This means that when the 20/35 constraints (without buffers) are breached the Index will rebalance and the pro-forma rebalancing results will be announced at the end of that day. This rebalance will be effective at the open of the third business day following the breach, so there is an advance notification of two full business days.

¹³ Further details on the MSCI Capped Indexes, please refer to www.msci.com/index-methodology.

Appendix VI: Capping Mechanism

The Index employs a multi-tiered capping framework to promote diversification and limit concentration risk at both the issuer and sector levels. The mechanism is summarized as follows:

1. Issuer-Level Capping

- The maximum weight of any single issuer is capped at the higher of 5% or the issuer's weight in the Parent Index.
- Any excess weight from issuers exceeding this cap is redistributed proportionally to uncapped issuers within the Eligible Universe, based on their free float-adjusted market capitalization.

2. GICS Sector-Based Redistribution

- Within each GICS sector, excess weight from capped issuers is pooled and redistributed across all eligible uncapped issuers in other sectors.
- Redistribution is proportional to the free float-adjusted market capitalization of the receiving issuers.
- GICS Sector weights are constrained to match their weights in the Eligible Universe.
- The process is subject to both issuer-level and sector-level constraints.

3. Iterative Process

Redistribution follows an iterative process:

Step 1: Identify the most violating constraint, based on the highest *Deviation Ratio*:

- For upper bounds: $\text{Deviation Ratio} = \text{Current Weight} / \text{Upper Bound}$
- For lower bounds: $\text{Deviation Ratio} = \text{Lower Bound} / \text{Current Weight}$

Step 2: Adjust the most violating constraint to its prescribed bound.

Step 3: The excess weight (difference of current value to the respective bound value), is distributed proportionally to all eligible constituents

The iterative process is repeated until the maximum Deviation Ratio ≤ 1 (rounded to five decimal places) or it has reached a maximum of 5000 iterations where the capping steps will return the solution found till this iteration step.

Appendix VII: Methodology Set

The Indexes are governed by a set of methodology and policy documents ("Methodology Set"), including the present index methodology document as mentioned below:

- Description of methodology set –
<https://www.msci.com/index/methodology/latest/ReadMe>
- MSCI Corporate Events Methodology –
<https://www.msci.com/index/methodology/latest/CE>
- MSCI Fundamental Data Methodology –
<https://www.msci.com/index/methodology/latest/FundData>
- MSCI Index Calculation Methodology –
<https://www.msci.com/index/methodology/latest/IndexCalc>
- MSCI Index Glossary of Terms –
<https://www.msci.com/index/methodology/latest/IndexGlossary>
- MSCI Index Policies –
<https://www.msci.com/index/methodology/latest/IndexPolicy>
- MSCI Global Industry Classification Standard (GICS) Methodology –
<https://www.msci.com/index/methodology/latest/GICS>
- MSCI Global Investable Market Indexes Methodology –
<https://www.msci.com/index/methodology/latest/GIMI>
- MSCI Global ex Controversial Weapons Indexes Methodology –
www.msci.com/index/methodology/latest/XCW
- MSCI Selection Indexes Methodology –
<https://www.msci.com/index/methodology/latest/ESG>
- MSCI Capped Indexes Methodology –
<https://www.msci.com/index/methodology/latest/Capped>
- MSCI EU CTB/PAB Index Framework –
<https://www.msci.com/index/methodology/latest/EUCTBPABIndexFramework>
- ESG Factors In Methodology*

The Methodology Set for the Indexes can also be accessed from MSCI's webpage <https://www.msci.com/index-methodology> in the section 'Search Methodology by Index Name or Index Code'.

* 'ESG Factors in Methodology' contains the list of environmental, social, and governance factors considered, and how they are applied in the methodology (e.g., selection, weighting or exclusion). It can be accessed in the Methodology Set as described above.

Appendix VII: Changes to this Document

The following section has been modified as of February 2024:

Appendix 5: Methodology Set

- Added details on the Methodology Set for the Indexes.

The following section has been modified as of May 2024:

Section 3.3: Monthly Review of Controversies Index Reviews

- Missing data treatment for Monthly Review of Controversies clarified in Section

Section 4: MSCI Solutions

- Updated wording on the MSCI sustainability and climate products.

Appendix II: Controversial Business Involvement Criteria

- Updated the exclusion criteria for the Thermal Coal Power Generation screen

The following section has been modified as of December 2024

Section 4.4: MSCI Climate Change Metrics

- Added a sub-section under Climate Change Metrics to provide additional details on Fossil Fuels related activities.

The following sections have been modified as of May 2025

Section 2: Constructing the Indexes

- The methodology and Index names were updated. As of June 2, 2025 the MSCI ESG Leaders Select 5% Issuer Capped Indexes have been renamed as MSCI ESG Selection P-Series 5% Issuer Capped Indexes.
- The MSCI Latin America Selection 20/35 Index was added to the list of indexes and a footnote was added to highlight that this index applies different Controversial Business Involvement screening to the other Indexes which is detailed in Appendix IV.

Section 2.1.3 Controversial Business Involvement Criteria

- The screening criteria was updated. The Thermal Coal mining and unconventional oil & gas are applied separately.
- The new screening criteria for thermal coal distribution, oil & gas value chain and fossil fuel power generation were added.

Section 2.2: Index Construction

- The MSCI Latin America Selection 20/35 Index was added and the reference to regional indexes was clarified.
- Updated details for the construction of the MSCI AC Far East ex Japan ESG Selection P-Series 5% Issuer Capped Index

- A footnote was added to highlight that the MSCI Emerging Markets ESG Selection P-Series Index was transitioned to this methodology as of the February 2024 Index Review.

Section 2.4 Treatment of Unrated Companies

- Added the treatment of companies when data on Business Involvement Screening Research or Climate Change Metrics research is not available from MSCI Solutions

Appendix II: Controversial Business Involvement Criteria

- Added description for the updated screening criteria for thermal coal mining and the new screening criteria for oil & gas value chain, fossil fuel power generation and thermal coal distribution.

Appendix IV: Controversial Business Involvement Criteria for the MSCI Latin America Selection 20/35 Index

- Created a new section for the controversial business involvement screening criteria of the MSCI Latin America Selection 20/35 Index. The MSCI Latin America Selection 20/35 Index does not apply any of the new or updated screens that were implemented for the other MSCI ESG Selection P-Series 5% Issuer Capped Indexes as of the May 2025 Index Review.

Appendix V: MSCI Latin America Selection 20/35 Index

- Removed the description for the capping of two regional indexes which are transitioning to other methodologies and updated the capping for the MSCI Latin America Selection 20/35 Index.

The following sections have been modified as of August 2025

Section 1: Introduction

- Removed ESG Ratings Trend from the Index description
- Updated capping description for all Indexes except the MSCI Latin America Selection 20/35 Index

Section 2.1.3. Controversial Business Involvement Criteria

- Added new screens for Palm Oil and Arctic Oil & Gas

Section 2.3 Issuer Capping

- Modified the issuer capping from 5% to Max (5%, Issuer weight in Parent Index)

Section 3.1.2 Ranking of Eligible Securities

- Removed the ESG Ratings Trend from the ranking criteria

Section 3.1.3 Selection of Eligible Securities

- Removed AA prioritization from the top 50% selection.

Appendix I: Guidelines on Achieving the Target Sector Coverage of 50%

- Removed the ESG Rating Trend criteria and description

Appendix II: Controversial Business Involvement Criteria for all Indexes except MSCI Latin America Selection 20/35 Capped Index

- Updated Appendix with latest language
- Modified screening criteria for Civilian Firearms and Tobacco
- Added description for the new screening criteria for Palm Oil and Arctic Oil & Gas

Appendix IV: Controversial Business Involvement Criteria for the MSCI Latin America Selection 20/35 Capped Index

- Updated Appendix with latest language
- Updated the restrictiveness criteria for each exclusion criteria
- Modified screening criteria for Civilian Firearms and Tobacco
- Added description for the new screening criteria for Palm Oil and Arctic Oil & Gas

Appendix VI: Capping Mechanism

- A new appendix has been added to provide further details on the multi-tiered capping framework

Contact Us

About MSCI

MSCI is a leading provider of critical decision support tools and services for the global investment community. With over 50 years of expertise in research, data and technology, we power better investment decisions by enabling clients to understand and analyze key drivers of risk and return and confidently build more effective portfolios. We create industry-leading research-enhanced solutions that clients use to gain insight into and improve transparency across the investment process.

To learn more, please visit www.msci.com.
msci.com/contact-us

The process for submitting a formal index complaint can be found on the index regulation page of MSCI's website at: <https://www.msci.com/index-regulation>.

AMERICA

United States	+ 1 888 588 4567 *
Canada	+ 1 416 687 6270
Brazil	+ 55 11 4040 7830
Mexico	+ 52 81 1253 4020

EUROPE, MIDDLE EAST & AFRICA

South Africa	+ 27 21 673 0103
Germany	+ 49 69 133 859 00
Switzerland	+ 41 22 817 9777
United Kingdom	+ 44 20 7618 2222
Italy	+ 39 02 5849 0415
France	+ 33 17 6769 810

EUROPE, MIDDLE EAST & AFRICA

China	+ 86 21 61326611
Hong Kong	+ 852 2844 9333
India	+ 91 22 6784 9160
Malaysia	1800818185 *
South Korea	+ 82 70 4769 4231
Singapore	+ 65 67011177
Australia	+ 612 9033 9333
Taiwan	008 0112 7513 *
Thailand	0018 0015 6207 7181 *
Japan	+ 81 3 4579 0333

* toll-free

Notice and disclaimer

The data, data feeds, databases, reports, text, graphs, charts, images, videos, recordings, models, metrics, analytics, indexes, ratings, scores, cases, estimates, assessments, software, websites, products, services and other information and materials contained herein or delivered in connection with this notice (collectively, the "Information") are copyrighted, trade secrets (when not publicly available), trademarks and proprietary property of MSCI Inc. or its subsidiaries (collectively, "MSCI"), MSCI's licensors, direct or indirect suppliers and authorized sources, and/or any third party contributing to the Information (collectively, with MSCI, the "Information Providers"). All rights in the Information are reserved by MSCI and its Information Providers and user(s) shall not, nor assist others to, challenge or assert any rights in the Information.

Unless you contact MSCI and receive its prior written permission, you must NOT use the Information, directly or indirectly, in whole or in part (i) for commercial purposes, (ii) in a manner that competes with MSCI or impacts its ability to commercialize the Information or its services, (iii) to provide a service to a third party, (iv) to permit a third party to directly or indirectly access, use or resell the Information, (v) to redistribute or resell the Information in any form, (vi) to include the Information in any materials for public dissemination such as fund factsheets, market presentations, prospectuses, and investor information documents (e.g. KIID or KIDs), (vii) to create or as a component of any financial products, whether listed or traded over the counter or on a private placement basis or otherwise, (viii) to create any indexes, ratings or other data products, including in derivative works combined with other indexes or data or as a policy, product or performance benchmarks for active, passive or other financial products, (ix) to populate a database, or (x) to train, use as an input to, or otherwise in connection with any artificial intelligence, machine learning, large language models or similar technologies except as licensed and expressly authorized under MSCI's AI Contracting Supplement at <https://www.msci.com/legal/supplemental-terms-for-client-use-of-artificial-intelligence>.

The intellectual property rights of MSCI and its Information Providers may not be misappropriated or used in a competitive manner through the use of third-party data or financial products linked to the Information, including by using an MSCI index-linked future or option in a competing third-party index to provide an exposure to the underlying MSCI index or by using an MSCI index-linked ETF to create a financial product that provides an exposure to the underlying MSCI index without obtaining a license from MSCI.

The user or recipient of the Information assumes the entire risk of any use it may make, permit or cause to be made of the Information. NONE OF THE INFORMATION PROVIDERS MAKES ANY EXPRESS OR IMPLIED WARRANTIES OR REPRESENTATIONS WITH RESPECT TO THE INFORMATION (OR THE RESULTS TO BE OBTAINED BY THE USE THEREOF), AND TO THE MAXIMUM EXTENT PERMITTED BY APPLICABLE LAW, EACH INFORMATION PROVIDER EXPRESSLY DISCLAIMS ALL IMPLIED WARRANTIES (INCLUDING ANY IMPLIED WARRANTIES OF ORIGINALITY, ACCURACY, TIMELINESS, SUITABILITY, NON-INFRINGEMENT, COMPLETENESS, MERCHANTABILITY AND FITNESS FOR A PARTICULAR PURPOSE) WITH RESPECT TO ANY OF THE INFORMATION. Without limiting any of the foregoing and to the maximum extent permitted by applicable law, in no event shall MSCI or any other Information Provider have any liability arising out of or relating to any of the Information, including for any direct, indirect, special, punitive, consequential (including lost profits) or any other damages, even if notified of the possibility of such damages. The foregoing shall not exclude or limit any liability that may not by applicable law be excluded or limited.

The Information, including index construction, ratings, historical data, or analysis, is not a prediction or guarantee of future performance, and must not be relied upon as such. Past performance is not indicative of future results. The Information may contain back tested data. Back-tested performance based on back-tested data is not actual performance but is hypothetical. There are frequently material differences between back tested performance results and actual results subsequently achieved by any investment strategy. The Information may include "Signals," defined as quantitative attributes or the product of methods or formulas that describe or are derived from calculations using historical data. Signals are inherently backward-looking because of their use of historical data, and they are inherently inaccurate, not intended to predict the future and must not be relied upon as such. The relevance, correlations and accuracy of Signals frequently change materially over time.

The Information may include data relating to indicative prices, evaluated pricing or other information based on estimates or evaluations (collectively, "Evaluations") that are not current and do not reflect real-time traded prices. No evaluation method, including those used by the Information Providers, may consistently generate evaluations or estimates that correspond to actual "traded" prices of any relevant securities or other assets. Evaluations are subject to change at any time without notice and without any duty to update or inform you, may not reflect prices at which actual transactions or collateral calls may occur or have occurred. The market price of securities, financial instruments, and other assets can be determined only if and when executed in the market. There may be no, or may not have been any, secondary trading market for the relevant securities, financial instruments or other assets. Private capital, equity, credit and other assets and their prices may be assessed infrequently, may not be priced on a secondary market, and shall not be relied upon as an explicit or implicit valuation of a particular instrument. Any reliance on fair value estimates and non-market inputs introduces potential biases and subjectivity. Internal Rate of Return metrics are not fully representative without full disclosure of fund cash flows, assumptions, and time horizons.

The Information does not constitute, and must not be relied upon as, investment advice, credit ratings, or proxy advisory or voting services. None of the Information Providers, their products or services, are fiduciaries or make any recommendation, endorsement, or approval of any investment decision or asset allocation. Likewise, the Information does not represent an offer to sell, a solicitation to buy, or an endorsement of any security, financial product, instrument, investment vehicle, or trading strategy, whether or not linked to or in any way based on any MSCI index, rating, subcomponent, or other Information (collectively, "Linked Investments"). The Information should not be relied on and is not a substitute for the skill, judgment and experience of any user when making investment and other business decisions. MSCI is not responsible for any user's compliance with applicable laws and regulations. All Information is impersonal, not tailored to the needs of any person, entity or group of persons, not objectively verifiable in every respect, and may not be based on information that is important to any user.

It is not possible to invest in an index. Exposure to an asset class or trading strategy or other category represented by an index is only available through third party investable instruments (if any) based on that index. MSCI makes no assurance that any Linked Investments will accurately track index performance or provide positive investment returns. Index returns do not represent results of actual trading of investible assets/securities. MSCI maintains and calculates indexes but does not manage assets. The calculation of indexes and index returns may deviate from the stated methodology. Index returns do not reflect payment of any sales charges or fees an investor may pay to purchase securities underlying the index or Linked Investments. The imposition of these fees and charges would cause the performance of a Linked Investment to be different than the MSCI index performance.

Information provided by MSCI Solutions LLC and certain related entities ("MSCI Solutions"), including materials utilized in MSCI sustainability and climate products, have not been submitted to, nor received approval from any regulatory body. MSCI sustainability and climate offerings, research and data are produced by, and ratings are solely the opinion of MSCI Solutions. MSCI India Domestic ESG Ratings are produced by MSCI ESG Ratings and Research Private Limited and offered domestically in India. Other MSCI products and services may utilize information from MSCI Solutions, Barra LLC or other affiliates. More information can be found in the relevant methodologies on www.msci.com. MSCI Indexes are administered by MSCI Limited (UK) and MSCI Deutschland GmbH. No regulated use of any MSCI private real assets indexes in any jurisdiction is permitted without MSCI's express written authorization. The process for applying for MSCI's express written authorization can be found at: <https://www.msci.com/index-regulation>.

MSCI receives compensation in connection with licensing its indexes and other Information to third parties. MSCI Inc.'s revenue includes fees based on assets in Linked Investments. Information can be found in MSCI Inc.'s company filings on the Investor Relations section of msci.com. Issuers mentioned in MSCI Solutions materials or their affiliates may purchase research or other products or services from one or more MSCI affiliates, manage financial products such as mutual funds or ETFs rated by MSCI Solutions or its affiliates or are based on MSCI Indexes. Constituents of MSCI equity indexes are listed companies, which are included in or excluded from the indexes according to the application of the relevant index methodologies. Constituents in MSCI Inc. equity indexes may include MSCI Inc., clients of MSCI or suppliers to MSCI. MSCI Solutions has taken steps to mitigate potential conflicts of interest and safeguard the integrity and independence of its research and ratings.

MIFID2/MIFIR notice: MSCI Solutions does not distribute or act as an intermediary for financial instruments or structured deposits, nor does it deal on its own account, provide execution services for others or manage client accounts. No MSCI product or service supports, promotes or is intended to support or promote any such activity. MSCI Solutions is an independent provider of sustainability and climate data. All use of indicative prices for carbon credits must comply with any rules specified by MSCI. All transactions in carbon credits must be traded "over-the-counter" (i.e. not on a regulated market, trading venue or platform that performs a similar function to a trading venue) and result in physical delivery of the carbon credits.

You may not remove, alter, or obscure any attribution to MSCI or notices or disclaimers that apply to the Information. MSCI, Barra, RiskMetrics, and other MSCI brands and product names are the trademarks, service marks, or registered trademarks of MSCI or its subsidiaries in the United States and other jurisdictions. The Global Industry Classification Standard (GICS) was developed by and is the exclusive property of MSCI and S&P Dow Jones Indices. "Global Industry Classification Standard (GICS)" is a service mark of MSCI and S&P Dow Jones Indices. Terms such as including, includes, for example, such as and similar terms used herein are without limitation.

MSCI and its Information Providers may use automated technologies and artificial intelligence to help generate content and output incorporated in the Information.

Privacy notice: For information about how MSCI collects and uses personal data, please refer to our Privacy Notice at: <https://www.msci.com/privacy-pledge>. For copyright infringement claims contact us at dmca@msci.com. This notice is governed by the laws of the State of New York without regard to conflict of laws principles.