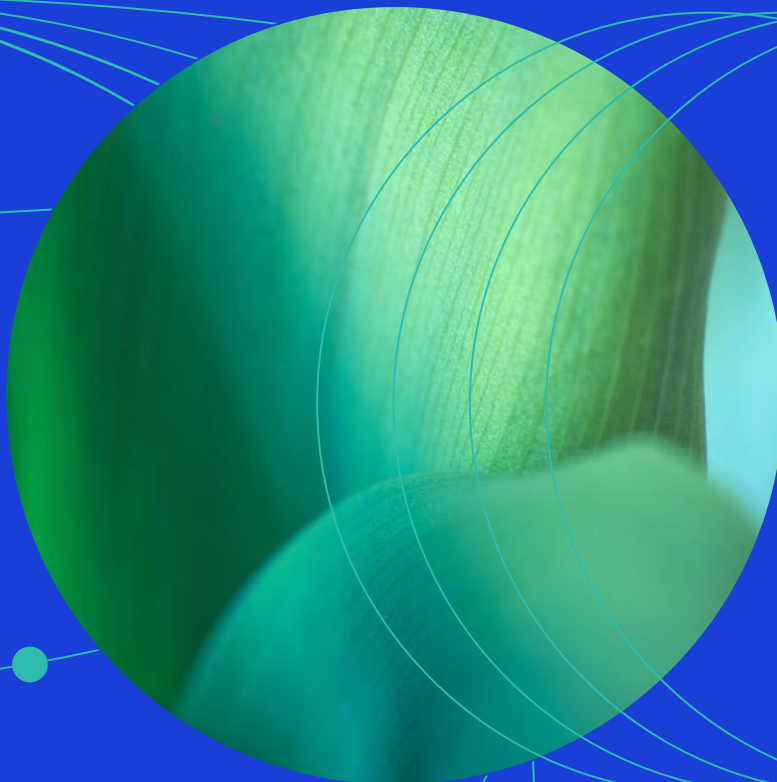




February 2026

MSCI Select Screened Indexes Methodology



Contents

1	Introduction.....	3
2	Constructing the Indexes	4
2.1	Eligible Universe	4
2.2	Eligibility Criteria	4
2.3	Weighting Scheme	5
2.4	GHG Intensity Reduction.....	6
2.5	Treatment of Unrated Companies.....	6
3	Maintaining the Indexes	7
3.1	Quarterly Index Reviews	7
3.2	Monthly Review of Controversies	7
3.3	Ongoing Event-Related Maintenance.....	7
4	MSCI Solutions.....	9
4.1	MSCI ESG Ratings	9
4.2	MSCI Controversies	9
4.3	MSCI Business Involvement Screening Research.....	9
4.4	MSCI Climate Change Metrics	9
4.4.1	Fossil Fuels and Power Generation Metrics	10
4.4.2	Greenhouse Gas (GHG) Emissions	10
	Appendix I: ESG Exclusion Criteria.....	11
	Appendix II: Eligible Universe	13
	Appendix III: Additional Weighting Scheme	14
	Appendix IV: Calculation of GHG Intensity	16
	Appendix V: Methodology Set.....	17
	Appendix VI: Changes to this Document	18

1 Introduction

The MSCI Select Screened Indexes ("the Indexes") are free float-adjusted market capitalization weighted indexes that exclude companies from underlying MSCI indexes ("Parent Indexes") based on Environmental, Social and Governance (ESG) criteria. The following companies are excluded:

- Companies that are assigned an MSCI ESG Rating of 'CCC' or
- Companies that are associated with conventional, controversial, civilian, and nuclear weapons as well as tobacco, palm oil and arctic oil & gas or
- Companies that derive revenues from thermal coal power and extraction of select fossil fuels or
- Companies that are involved in Red Flag controversies, Orange Flag Land Use and Biodiversity controversies or Orange Flag Supply Chain Management controversies or
- Companies that are not in compliance with the United Nations Global Compact principles

In addition, the Indexes target a minimum 30% reduction in carbon emission intensity relative to the underlying parent indexes ("Parent Indexes")¹.

¹ The Indexes are governed by a set of methodology and policy documents ("Methodology Set"), including the present index methodology document. Please refer to Appendix V for more details.

2 Constructing the Indexes

Constructing the Indexes involves the following steps.

- Defining the Eligible Universe
- Applying the Greenhouse Gas (GHG) Intensity Reduction

2.1 Eligible Universe

The Eligible Universe for the Indexes includes all the constituents of their respective Parent Index, as shown in Appendix II.

2.2 Eligibility Criteria

The Indexes use company ratings and research provided by MSCI Solutions LLC ("MSCI Solutions")² to determine eligibility for Index inclusion.

2.2.1 ESG Ratings Eligibility

The Indexes use MSCI ESG Ratings to identify companies that have demonstrated an ability to manage their ESG risks and opportunities. Companies with an MSCI ESG Rating of 'CCC' are excluded from the Indexes.

2.2.2 Controversial Business Involvement Criteria

The Indexes use MSCI Business Involvement Screening Research to identify companies that are involved in the following business activities. Companies that meet the business involvement criteria are excluded from the Indexes. Please refer to Appendix I for details on these criteria

- Conventional Weapons³
- Controversial Weapons
- Nuclear Weapons
- Civilian Firearms
- Tobacco
- Fossil Fuel Extraction
- Thermal Coal Power

² See section 4 for further information regarding ESG and climate data used in the Indexes that MSCI Limited and MSCI Deutschland GmbH source from MSCI Solutions LLC (MSCI Solutions), a separate subsidiary of MSCI Inc. MSCI Solutions is solely responsible for the creation, determination and management of such data as a provider to MSCI Limited and MSCI Deutschland GmbH. MSCI Limited and MSCI Deutschland GmbH are the benchmark administrators for the MSCI indexes.

³ Effective March 02, 2026, the Conventional Weapons exclusion not applied for all indexes. Going forwards, this exclusion is only applied for the MSCI Emerging Markets Select Screened Index and MSCI Pacific ex Japan Select Screened Index.

- Arctic Oil & Gas
- Palm Oil

In addition to the above, companies are also excluded from the Indexes if they exhibit any of the following characteristics:

- Companies assessed as having involvement in controversies that are classified as Red Flags (MSCI Controversies Score of 0). A Red Flag⁴ indicates an ongoing Very Severe controversy implicating a company directly through its actions, products, or operations.
- Companies assessed as having involvement in Land Use and Biodiversity controversies that are classified as Orange Flags (MSCI Controversies: Environment – Land Use and Biodiversity Score of 1). An Orange Flag indicates an ongoing Severe controversy implicating a company directly, or a Very Severe controversy that is either partially resolved or indirectly attributed to the company's actions, products, or operations.
- Companies assessed as having involvement in Supply Chain Management controversies that are classified as Orange Flags (MSCI Controversies: Environment – Supply Chain Management Score of 1). An Orange Flag indicates an ongoing Severe controversy implicating a company directly, or a Very Severe controversy that is either partially resolved or indirectly attributed to the company's actions, products, or operations.
- Failure to comply with the United Nations Global Compact Principles (UN Global Compact Alignment value of "Fail").

2.3 Weighting Scheme

The remaining securities, after the exclusions based on section 2.2, are weighted in proportion of their free float-adjusted market capitalization.

Additionally, security weights are adjusted to specific requirements of neutrality and active exposure relative to sector/country/region categories as detailed in Appendix III. The applicable region neutrality and active exposure constraints, along with the GHG-Intensity reduction described in the next section (2.4), are applied through an iterative process until all restrictions are met simultaneously.

⁴ A company receives a "Fail" designation under a specific Global Norms screen if it is alleged to be involved in one or more Red Flag controversy cases related to alignment with the corresponding global norms:

Organization for Economic Co-operation and Development, United Nations Global Compact, United Nations Guiding Principles on Business & Human Rights Alignment, International Labor Organization - Fundamental Principles and Rights at Work (with & without Health & Safety).

For more details on Controversies or Global Norms, please refer to the [MSCI Controversies and Global Norms Methodology](#)

2.4 GHG Intensity Reduction

After the weighting scheme is applied as per section 2.3, the GHG intensity relative to the Parent Index is assessed. If the GHG intensity⁵ is not at least 30% lower than the Parent Index, additional securities are excluded from the Eligible Universe to achieve a reduction of 30% GHG intensity relative to the Parent Index. The following iterative process is applied:

1. Securities are ranked in descending order of GHG intensity.
2. The security with the highest GHG intensity is excluded and the resulting Index is compared to the Parent Index, to determine if a 30% reduction in GHG intensity has been achieved.
3. If the reduction has been achieved, no further securities are excluded. If the reduction has not been achieved, further securities are excluded as per steps 1 and 2 until the 30% reduction is achieved.

2.4.1 Re-eligibility following GHG Intensity Reduction Exclusion⁶

Any security excluded due to the GHG Intensity Reduction described in Section 2.4 will be subject to a 12-month waiting period before it becomes eligible for re-inclusion in the Indexes. The timeline below illustrates this process, where 't' is the number of Index Reviews:

Time since exclusion	Index Review	Eligibility Status
0	T	Security excluded due to GHG intensity reduction.
< 12 months	T+1, T+2, T+3	Security not eligible for inclusion (waiting period)
>= 12 months	T+4	Security becomes eligible again for inclusion in the Indexes.

2.5 Treatment of Unrated Companies

Companies not assessed by MSCI Solutions on data for any of the following MSCI sustainability and climate products are not eligible for inclusion in the Indexes.

- MSCI Controversies
- MSCI Climate Change Metrics
- MSCI Business Involvement Screening Research (BISR)

For the treatment of unrated companies in the calculation of GHG Intensity, please refer to Appendix IV.

⁵ Please refer to Appendix IV for details of the calculation of GHG Intensity.

⁶ Section 2.4.1 is not applicable for the MSCI Emerging Markets Select Screened Index and MSCI Pacific ex Japan Select Screened Index.

3 Maintaining the Indexes

3.1 Quarterly Index Reviews

The Indexes are reviewed on a quarterly basis to coincide with the regular Index Reviews of the MSCI Global Investable Market Indexes. The changes are implemented as of the close of the last business day of February, May, August and November.

In general, MSCI uses MSCI Solutions data⁶ (including MSCI ESG Ratings, MSCI Controversies Scores, MSCI Business Involvement Screening Research and MSCI Climate Change Metrics) as of the end of the month preceding the Index Reviews for the rebalancing of the Index. For some securities, such data may not be published by MSCI Solutions by the end of the month preceding the Index Review. For such securities, MSCI will use ESG data published after the end of month, when available, for the rebalancing of the Index.

The pro forma Indexes are in general announced nine business days before the effective date.

3.2 Monthly Review of Controversies

Index constituents are reviewed on a monthly basis for the involvement in controversies and for compliance with the United Nations Global Compact Principles. Existing constituents will be deleted if they face controversies as defined as defined by MSCI Controversies Score of 0 ('Red flag' companies), or if they fail to comply with the UN Global Compact Principles.

MSCI uses MSCI Controversies data as of the end of the month preceding the review (e.g., end of June data for the end of July monthly review). For some securities, such data may not be published by MSCI Solutions by the end of the month preceding the review. For such securities, MSCI will use ESG data published after the end of month, when available, for the monthly review of the Index.

The pro forma Indexes are generally announced nine business days before the first business day of the month.

3.3 Ongoing Event-Related Maintenance

The following section briefly describes the treatment of common corporate events within the Indexes.

No new securities will be added (except where noted below) to the Indexes between Index Reviews. For cases where additions are noted below, securities will be added to the Index only if added to the Parent Index.

Parent Index deletions will be reflected simultaneously.

⁶ See section 4 for details of data sourced from MSCI Solutions used in the Indexes.

There are no deletions from the Indexes between Index Reviews on account of a security becoming ineligible because of a change in business involvement, MSCI ESG Rating and/or failure to comply with the UN Global Compact Principles and/or decrease in MSCI Controversies Score.

Event Type

Event Details

New additions to the Parent Index

A new security added to the parent index (such as IPO and other early inclusions) will not be added to the index.

Spin-Offs

All securities created as a result of the spin-off of an existing Index constituent will not be added to the Index at the time of event implementation. Reevaluation for addition in the Indexes will occur at the subsequent Index Review.

Merger/Acquisition

For Mergers and Acquisitions, the acquirer's post event weight will account for the proportionate amount of shares involved in deal consideration, while cash proceeds will be invested across the Index.

If an existing Index constituent is acquired by a non-Index constituent, the existing constituent will be deleted from the Index and the acquiring non-constituent will not be added to the Index.

Changes in Security Characteristics

A security will continue to be an Index constituent if there are changes in characteristics (country, sector, size segment, etc.) Reevaluation for continued inclusion in the Index will occur at the subsequent Index Review.

Further detail and illustration regarding specific treatment of corporate events relevant to this Index can be found in the MSCI Corporate Events Methodology book.

The MSCI Corporate Events methodology book is available at: <https://www.msci.com/index-methodology>.

4 MSCI Solutions

The Indexes are products of MSCI Inc. that utilize information such as company ratings and research produced and provided by MSCI Solutions LLC (MSCI Solutions), a subsidiary of MSCI Inc. In particular, the Indexes use the following MSCI sustainability and climate products: MSCI Controversies, MSCI Business Involvement Screening Research and MSCI Climate Change Metrics. MSCI Indexes are administered by MSCI Limited and MSCI Deutschland GmbH.

4.1 MSCI ESG Ratings

MSCI ESG Ratings aim to measure entities' management of environmental, social and governance risks and opportunities. MSCI ESG Ratings use a weighted average key issue calculation that is normalized by industry to arrive at an industry-adjusted ESG score (0-10), which is then translated to a seven-point scale from 'AAA' to 'CCC', indicating how an entity manages relevant key issues relative to industry peers.

The MSCI ESG Ratings methodology can be found at: <https://www.msci.com/legal/sustainability-and-climate-resources-and-disclosures>.

4.2 MSCI Controversies

MSCI Controversies provide assessments of controversies concerning the potential negative environmental, social, and/or governance impact of company operations, products and services. The evaluation framework used in MSCI Controversies is designed to be consistent with international norms represented by the UN Declaration of Human Rights, the ILO Declaration on Fundamental Principles and Rights at Work, and the UN Global Compact. MSCI Controversies Score falls on a 0-10 scale, with "0" being the most severe controversy.

The MSCI Controversies methodology can be found at: <https://www.msci.com/legal/sustainability-and-climate-resources-and-disclosures>

4.3 MSCI Business Involvement Screening Research

MSCI Business Involvement Screening Research (BISR) aims to enable institutional investors to manage environmental, social and governance (ESG) standards and restrictions reliably and efficiently.

The MSCI Business Involvement Screening Research methodology can be found at: <https://www.msci.com/legal/sustainability-and-climate-resources-and-disclosures>.

4.4 MSCI Climate Change Metrics

MSCI Climate Change Metrics provides climate data & tools to support institutional investors seeking to integrate climate risk & opportunities into their investment strategy and processes. This includes investors seeking to achieve a range of objectives, including measuring and reporting on climate risk exposure, implementing low carbon and fossil fuel-free strategies, alignment with temperature pathways and factoring climate change research into their risk management processes, in particular through climate scenario analysis for both transition and physical risks.

The dataset spans across the four dimensions of a climate strategy: transition risks, green opportunities, physical risks and 1.5° alignment.

For more details on MSCI Climate Change Metrics, please refer to <https://www.msci.com/legal/sustainability-and-climate-resources-and-disclosures>

4.4.1 Fossil Fuels and Power Generation Metrics

MSCI Solutions identifies companies involved in fossil fuel-related assets and activities including fossil fuel reserves, resource extraction, power generation and generation capacity, revenue from such assets and activities and capital investments in such assets and activities. The metrics are based on disclosed activities, disclosed revenue and estimates of revenue that are extrapolated from company disclosures and eligible third-party sources (such as NGOs).

4.4.2 Greenhouse Gas (GHG) Emissions

MSCI Solutions collects reported emissions and uses proprietary estimation methodologies that follows the GHG Protocol in including carbon dioxide (CO₂) and the five other principal GHGs: hydrofluorocarbons (HFCs), methane (CH₄), nitrous oxide (N₂O), perfluorocarbons (PFCs), and sulfur hexafluoride (SF₆). Emissions of these other gases are accounted for in terms of the quantity of CO₂ that has an equivalent global warming potential.

Appendix I: Controversial Business Involvement Criteria

MSCI Solutions has developed a framework designed to define significant involvement in controversial activities. According to this framework, there are four levels of restrictiveness: Most Restrictive, Highly Restrictive, Moderately Restrictive and Least Restrictive.

Each controversial activity screened by the MSCI Select Screened Indexes (except Fossil Fuel Extraction, Thermal Coal Power, Palm Oil, Arctic Oil & Gas and Global Norms) is assigned to one of these restrictiveness levels:

"Most Restrictive" screen applied

- **Controversial Weapons**

- All companies with any tie to Controversial Weapons (cluster munitions, landmines, depleted uranium weapons, biological/chemical weapons, blinding lasers, non-detectable fragments and incendiary weapons), as defined by the methodology of the MSCI Ex-Controversial Weapons Indexes available at <https://www.msci.com/index-methodology>.

"Highly Restrictive" screen applied

- **Nuclear Weapons**

- All companies that manufacture nuclear warheads and/or whole nuclear missiles.
- All companies that manufacture components that were developed or are significantly modified for exclusive use in nuclear weapons (warheads and missiles).

- **Civilian Firearms**

- All companies classified as "Producer" of firearms and small arms ammunitions for civilian markets. It does not include companies that cater to the military, government, and law enforcement markets
- All companies deriving 5% or more aggregate revenue from the production and distribution (wholesale or retail) of firearms or small arms ammunition intended for civilian use

- **Tobacco**

- All companies classified as a "Producer"
- All companies deriving 5% or more aggregate revenue from the production, distribution, retail and supply of tobacco-related products.

Activities not classified under any specific tolerance level

- **Fossil Fuel Extraction**

- All companies deriving 5% or more aggregate revenue (either reported or estimated) from thermal coal mining and unconventional oil and gas extraction
 - Thermal Coal Mining: Revenue from the mining of thermal coal (including lignite, bituminous, anthracite and steam coal) and its sale to external parties. It does not cover revenue from metallurgical coal; coal mined for internal power generation (e.g. in the case of vertically

integrated power producers); intra-company sales of mined thermal coal; and revenue from coal trading

- Unconventional Oil & Gas Extraction: Revenue from oil sands, oil shale (kerogen-rich deposits), shale gas, shale oil, coal seam gas, and coal bed methane. It does not cover all types of conventional oil and gas production including Arctic onshore/offshore, deep water, shallow water and other onshore/offshore

- **Thermal Coal Power**

- All companies deriving 5% or more revenue (either reported or estimated) from thermal coal-based power generation

- **Arctic Oil & Gas**

- All companies deriving 5% or more revenue from arctic oil and arctic gas production. The definition of Arctic is geographical and includes production activities north of the 66.5 latitude. This includes offshore or onshore oil and gas production

- **Palm Oil**

- All companies deriving 5% or more aggregate revenue from the production of Palm Oil

- **Global Norms – United Nations Global Compact Compliance**

- All companies that fail to comply with the United Nations Global Compact principles

The following exclusions (in addition to the exclusions above) are only applicable to the MSCI Emerging Markets Select Screened and MSCI Pacific ex Japan Select Screened Indexes

- **Conventional Weapons**

- All companies deriving 5% or more revenue from the production of conventional weapons and components
- All companies deriving 10% or more aggregate revenue from weapons systems, components, and support systems and services.

- **Nuclear Weapons**

- All companies that manufacture nuclear warheads and/or whole nuclear missiles.
- All companies that manufacture components that were developed or are significantly modified for exclusive use in nuclear weapons (warheads and missiles).
- All companies that manufacture or assemble delivery platforms that were developed or significantly modified for the exclusive delivery of nuclear weapons.
- All companies that provide auxiliary services related to nuclear weapons.
- All companies that manufacture components that were not developed or not significantly modified for exclusive use in nuclear weapons (warheads and missiles) but can be used in nuclear weapons.
- All companies that manufacture or assemble delivery platforms that were not developed or not significantly modified for the exclusive delivery of nuclear weapons but have the capability to deliver nuclear weapons.
- All companies that manufacture components for nuclear-exclusive delivery platforms.

Appendix II: Eligible Universe

The Eligible Universe for the Indexes includes all the constituents of their respective MSCI Parent Index, as shown below

Index Name	Parent Index
MSCI World Select Screened Index	MSCI World
MSCI USA Select Screened Index	MSCI USA
MSCI Japan Select Screened Index	MSCI Japan
MSCI EM Select Screened Index	MSCI EM
MSCI Europe Select Screened Index	MSCI Europe
MSCI EMU Select Screened Index	MSCI EMU
MSCI ACWI Select Screened Index	MSCI ACWI
MSCI EM Asia Select Screened Index	MSCI EM Asia
MSCI Pacific ex Japan Select Screened Index	MSCI Pacific ex Japan
MSCI Canada Select Screened Index	MSCI Canada
MSCI China A Inclusion Select Screened Index	MSCI China A Inclusion

Appendix III: Additional Weighting Scheme

After the exclusions based on section 2.2 and the weighting scheme applied based on section 2.3, the weights for the Indexes are updated as specified below.

Region Neutrality³ : The weight of each region in the Indexes is equated with the weight of that region in the corresponding Parent Index. This is done by normalizing the weights of the constituents within each region to reflect the effective Parent Index region weight.

Sector Active Exposure⁴: The Indexes weights are updated to control the sector weights from deviating at most a fixed percentage relative to the sector weights of the corresponding Parent Index.

Country Active Exposure: The Indexes weights are updated to control the country weights from deviating at most a fixed percentage relative to the country weights of the corresponding Parent Index.

Index Name	Region Neutrality	Sector Active Exposure Absolute Limit	Country Active Exposure Absolute Limit	Cap on Maximum Country Weight
MSCI World Select Screened Index	Yes	1%	No	No
MSCI USA Select Screened Index	No	5%	No	No
MSCI Japan Select Screened Index	No	1%	No	No
MSCI EM Select Screened Index	No	No	5%	No
MSCI Europe Select Screened Index	No	1%	No	No
MSCI EMU Select Screened Index	No	1%	No	No

³ Regions currently identified are Americas, Europe & Middle East and Pacific. In addition, the Emerging Markets (EM) region is used in the MSCI ACWI Select Screened Index

⁴ The active exposure absolute limits do not apply for sectors/countries that are left empty after applying the exclusions as per Section 2.2

Index Name	Region Neutrality	Sector Active Exposure Absolute Limit	Country Active Exposure Absolute Limit	Cap on Maximum Country Weight
MSCI ACWI Select Screened Index	Yes	Within Developed Markets (DM): In North America: 5% In rest of countries: 1% No sector limit is applied to Emerging Markets (EM)	Within Emerging Markets (EM): 1% No country limit is applied to Developed Markets (DM)	No
MSCI EM Asia Select Screened Index	No	No	5%	Maximum weight for India capped at 18% ⁵
MSCI Pacific ex Japan Select Screened Index	No	1%	No	No
MSCI Canada Select Screened Index	No	1%	No	No
MSCI China A Inclusion Select Screened Index	No	1%	No	No

⁵ The capping structure for the MSCI EM Asia Select Screened Index is applied as follows: the maximum weight to India is capped at 18% at each Quarterly Index Review. On a monthly basis, between Index Reviews, the exposure for India is capped to a maximum of 18%. On a daily basis, the weight for India is reset to 18% if it exceeds a threshold of 20% at the end of any business day. Monthly and daily capping are effective in the index starting February 9, 2024

Appendix IV: Calculation of GHG Intensity

The security level and Index level GHG intensity are calculated as per below formula:

$$\text{Security Level GHG Intensity} = \frac{\text{Carbon Emissions Scope 1 + 2 + 3}}{\text{Enterprise Value} + \text{Cash (in M\%)}}$$

Index Level GHG Intensity

$$= \frac{\text{sum of (Constituent weight * Security Level GHG Intensity)}}{\text{sum of constituent weight with Carbon emissions and EVIC data available}}$$

Securities with missing Carbon Emissions and/or Enterprise Value + Cash are not considered for potential exclusion under section 2.4

Appendix V: Methodology Set

The Index is governed by a set of methodology and policy documents ("Methodology Set"), including the present index methodology document as mentioned below:

- Description of methodology set –
<https://www.msci.com/index/methodology/latest/ReadMe>
- MSCI Corporate Events Methodology –
<https://www.msci.com/index/methodology/latest/CE>
- MSCI Fundamental Data Methodology –
<https://www.msci.com/index/methodology/latest/FundData>
- MSCI Index Calculation Methodology –
<https://www.msci.com/index/methodology/latest/IndexCalc>
- MSCI Index Glossary of Terms –
<https://www.msci.com/index/methodology/latest/IndexGlossary>
- MSCI Index Policies –
<https://www.msci.com/index/methodology/latest/IndexPolicy>
- MSCI Global Industry Classification Standard (GICS) Methodology –
<https://www.msci.com/index/methodology/latest/GICS>
- MSCI Global Investable Market Indexes Methodology –
<https://www.msci.com/index/methodology/latest/GIMI>
- MSCI Global ex Controversial Weapons Indexes Methodology –
<https://www.msci.com/index/methodology/latest/XCW>
- ESG Factors In Methodology*

The Methodology Set for the Index can also be accessed from MSCI's webpage

<https://www.msci.com/index-methodology> in the section 'Search Methodology by Index Name or Index Code'.

* 'ESG Factors in Methodology' contains the list of environmental, social, and governance factors considered, and how they are applied in the methodology (e.g., selection, weighting or exclusion). It can be accessed in the Methodology Set as described above.

Appendix VI: Changes to this Document

First version reviewed and published in April 2021.

The following modifications are effective from May 2021:

Section 1: Introduction

- Updated indexes list: MSCI ACWI Select ESG Screened Index added

Appendix II: Eligible Universe

- Updated Eligible Universe table

Appendix III: Additional Weighting Scheme

- Updated Weighting Scheme table

The following modifications are effective from August 2021:

Appendix I: ESG Exclusion Criteria

- Updated criteria for Conventional Weapons

The following modifications are effective from November 2021:

Section 1: Introduction

- Updated indexes list: MSCI EM Asia Select ESG Screened Index and MSCI Pacific ex Japan Select ESG Screened Index added

Appendix II: Eligible Universe

- Updated Eligible Universe table

Appendix III: Additional Weighting Scheme

- Updated Weighting Scheme table

The following modifications are effective from April 2022:

Section 1: Introduction

- Updated indexes list: MSCI Canada Select ESG Screened Index and MSCI China A Inclusion Select ESG Screened Index added

Appendix II: Eligible Universe

- Updated Eligible Universe table

Appendix III: Additional Weighting Scheme

- Updated Weighting Scheme table

The following modifications are effective from May 2022:

Section 3.2: ESG Exclusions

- Added 'Fossil Fuel Extraction' and 'Thermal Coal Power'
- Removed 'Thermal Coal' and 'Oil Sands'

Section 4.2: Ongoing Event-Related Maintenance

- Clarified the maintenance rules

Appendix I: ESG Exclusions Criteria

- Added screens for 'Fossil Fuel Extraction' and 'Thermal Coal Power'
- Removed screens for 'Thermal Coal' and 'Oil Sands'
- Added note on treatment for unrated securities or securities with missing coverage

The following modifications are effective from August 2022:

Section 1: Introduction

- Added exclusion criteria for MSCI Controversies Score of zero

Section 3.2.2: ESG Exclusions

- Added exclusion criteria for MSCI Controversies Score of zero

The following modifications are effective from November 2022:

Appendix III: Additional Weighting Scheme

- Updated Weighting Scheme table

The following modifications are effective from February 2023:

Section 3.1: Eligible Universe

- Added screens for 'Arctic Oil & Gas' and 'Palm Oil'
- Added references to 'Environment – Land Use & Biodiversity Score' and 'Environment – Supply Chain Management Score'

Section 3.4: GHG Intensity Reduction

- New Section

Section 4.2: Monthly Review of Controversies

- New Section

Appendix I: ESG Exclusions Criteria

- Added screens for 'Palm Oil' and 'Arctic Oil & Gas'

Appendix IV: Calculation of GHG Intensity

- New Appendix

Methodology book was updated to reflect the transition of the MSCI Global Investable Market Indexes (GIMI) to Quarterly Comprehensive Index Reviews.

All references to “Semi-Annual Index Reviews” and “Quarterly Index Reviews” of the MSCI GIMI were replaced with “Index Reviews”.

The following modifications are effective from June 2023:

Section 1: Introduction

- Added footnote on Methodology Set

Section 2.2: Eligibility Criteria

- Clarified the exclusion criteria for companies involved in Controversies

Section 2.3: Weighting Scheme

- Details added to the index weighting scheme process

Section 4: MSCI Solutions

- Moved that section after the Section 3 (Maintaining the MSCI ESG Screened Indexes)
- Updated the descriptions of MSCI sustainability and climate products

The following modifications are effective from August 2023:

Appendix 3: Additional Weighting Scheme

- Added footnote on Active Exposure Absolute Limits

The following modifications are effective from February 2024:

Appendix 3: Additional Weighting Scheme

- Enhanced capping structure implemented for the EM Asia region, specifically for India exposure. Added footnote describing the frequencies and capping parameters. The enhanced capping structure is effective from February 9, 2024.

The following sections have been modified as of February 2025

- The methodology and index names were updated. Effective February 3, 2025, the MSCI Select ESG Screened Indexes have been renamed to MSCI Select Screened Indexes.

Section 2.5 Treatment of Unrated Companies

- Moved treatment of companies when ratings and research is not available from MSCI Solutions to a new section.
- Added the treatment of companies when business involvement screening research or climate change metrics research are not available from MSCI Solutions

Section 4.4: MSCI Climate Change Metrics.

- Added a sub-section under Climate Change Metrics to provide additional details on Fossil Fuels related activities and Greenhouse Gas Emissions.

Appendix II: Eligible Universe

- Updated the index names in this section.

Appendix V: Methodology Set

- Added details on the Methodology Set for the Indexes

The following sections have been modified as of February 2026

Section 2.2.2: Controversial Business Involvement Criteria

- Updated disclosure for the Red Flag controversies exclusion to provide additional clarity on the international standards referenced by the MSCI Controversies / Global Norms framework.
- Added a new footnote limiting the Conventional Weapons screen to the two indexes listed in the footnote.

Section 2.4.1: Re-eligibility following GHG Intensity Reduction Exclusion

- Introduced a 12-month waiting period for securities excluded as a result of the GHG Intensity Reduction process

Section 2.5: Treatment of Unrated Companies

- Included a reference to the corresponding appendix for GHG intensity calculation when data is unavailable

Appendix I: Controversial Business Involvement Criteria

- Updated the exclusion criteria to screen only companies that are directly involved in creating nuclear weapons.
- Added a new note clarifying that the Conventional Weapons and Nuclear Weapons screens apply only to the two indexes listed in the Appendix

Contact Us

About MSCI

MSCI is a leading provider of critical decision support tools and services for the global investment community. With over 50 years of expertise in research, data and technology, we power better investment decisions by enabling clients to understand and analyze key drivers of risk and return and confidently build more effective portfolios. We create industry-leading research-enhanced solutions that clients use to gain insight into and improve transparency across the investment process.

To learn more, please visit www.msci.com.

msci.com/contact-us

The process for submitting a formal index complaint can be found on the index regulation page of MSCI's website at: <https://www.msci.com/index-regulation>.

AMERICA

United States	+ 1 888 588 4567 *
Canada	+ 1 416 687 6270
Brazil	+ 55 11 4040 7830
Mexico	+ 52 81 1253 4020

EUROPE, MIDDLE EAST & AFRICA

South Africa	+ 27 21 673 0103
Germany	+ 49 69 133 859 00
Switzerland	+ 41 22 817 9777
United Kingdom	+ 44 20 7618 2222
Italy	+ 39 02 5849 0415
France	+ 33 17 6769 810

EUROPE, MIDDLE EAST & AFRICA

China	+ 86 21 61326611
Hong Kong	+ 852 2844 9333
India	+ 91 22 6784 9160
Malaysia	1800818185 *
South Korea	+ 82 70 4769 4231
Singapore	+ 65 67011177
Australia	+ 612 9033 9333
Taiwan	008 0112 7513 *
Thailand	0018 0015 6207 7181 *
Japan	+ 81 3 4579 0333
* toll-free	

Notice and disclaimer

The data, data feeds, databases, reports, text, graphs, charts, images, videos, recordings, models, metrics, analytics, indexes, ratings, scores, cases, estimates, assessments, software, websites, products, services and other information and materials contained herein or delivered in connection with this notice (collectively, the "Information") are copyrighted, trade secrets (when not publicly available), trademarks and proprietary property of MSCI Inc. or its subsidiaries (collectively, "MSCI"), MSCI's licensors, direct or indirect suppliers and authorized sources, and/or any third party contributing to the Information (collectively, with MSCI, the "Information Providers"). All rights in the Information are reserved by MSCI and its Information Providers and user(s) shall not, nor assist others to, challenge or assert any rights in the Information. e

Unless you contact MSCI and receive its prior written permission, you must NOT use the Information, directly or indirectly, in whole or in part (i) for commercial purposes, (ii) in a manner that competes with MSCI or impacts its ability to commercialize the Information or its services, (iii) to provide a service to a third party, (iv) to permit a third party to directly or indirectly access, use or resell the Information, (v) to redistribute or resell the Information in any form, (vi) to include the Information in any materials for public dissemination such as fund factsheets, market presentations, prospectuses, and investor information documents (e.g. KIDs or KIDS), (vii) to create or as a component of any financial products, whether listed or traded over the counter or on a private placement basis or otherwise, (viii) to create any indexes, ratings or other data products, including in derivative works combined with other indexes or data or as a policy, product or performance benchmarks for active, passive or other financial products, (ix) to populate a database, or (x) to train, use as an input to, or otherwise in connection with any artificial intelligence, machine learning, large language models or similar technologies except as licensed and expressly authorized under MSCI's AI Contracting Supplement at <https://www.msci.com/legal/supplemental-terms-for-client-use-of-artificial-intelligence>.

The intellectual property rights of MSCI and its Information Providers may not be misappropriated or used in a competitive manner through the use of third-party data or financial products linked to the Information, including by using an MSCI index-linked future or option in a competing third-party index to provide an exposure to the underlying MSCI index or by using an MSCI index-linked ETF to create a financial product that provides an exposure to the underlying MSCI index without obtaining a license from MSCI. m

The user or recipient of the Information assumes the entire risk of any use it may make, permit or cause to be made of the Information. NONE OF THE INFORMATION PROVIDERS MAKES ANY EXPRESS OR IMPLIED WARRANTIES OR REPRESENTATIONS WITH RESPECT TO THE INFORMATION (OR THE RESULTS TO BE OBTAINED BY THE USE THEREOF), AND TO THE MAXIMUM EXTENT PERMITTED BY APPLICABLE LAW, EACH INFORMATION PROVIDER EXPRESSLY DISCLAIMS ALL IMPLIED WARRANTIES (INCLUDING ANY IMPLIED WARRANTIES OF ORIGINALITY, ACCURACY, TIMELINESS, SUITABILITY, NON-INFRINGEMENT, COMPLETENESS, MERCHANTABILITY AND FITNESS FOR A PARTICULAR PURPOSE) WITH RESPECT TO ANY OF THE INFORMATION. Without limiting any of the foregoing and to the maximum extent permitted by applicable law, in no event shall MSCI or any other Information Provider have any liability arising out of or relating to any of the Information, including for any direct, indirect, special, punitive, consequential (including lost profits) or any other damages, even if notified of the possibility of such damages. The foregoing shall not exclude or limit any liability that may not be by applicable law be excluded or limited. o

The Information, including index construction, ratings, historical data, or analysis, is not a prediction or guarantee of future performance, and must not be relied upon as such. Past performance is not indicative of future results. The Information may contain back tested data. Back-tested performance based on back-tested data is not actual performance but is hypothetical. There are frequently material differences between back tested performance results and actual results subsequently achieved by any investment strategy. The Information may include "Signals," defined as quantitative attributes or the product of methods or formulas that describe or are derived from calculations using historical data. Signals are inherently backward-looking because of their use of historical data, and they are inherently inaccurate, not intended to predict the future and must not be relied upon as such. The relevance, correlations and accuracy of Signals frequently change materially over time. .

The Information may include data relating to indicative prices, evaluated pricing or other information based on estimates or evaluations (collectively, "Evaluations") that are not current and do not reflect real-time traded prices. No evaluation method, including those used by the Information Providers, may consistently generate evaluations or estimates that correspond to actual "traded" prices of any relevant securities or other assets. Evaluations are subject to change at any time without notice and without any duty to update or inform you, may not reflect prices at which actual transactions or collateral calls may occur or have occurred. The market price of securities, financial instruments, and other assets can be determined only if and when executed in the market. There may be no, or may not have been any, secondary trading market for the relevant securities, financial instruments or other assets. Private capital, equity, credit and other assets and their prices may be assessed infrequently, may not be priced on a secondary market, and shall not be relied upon as an explicit or implicit valuation of a particular instrument. Any reliance on fair value estimates and non-market inputs introduces potential biases and subjectivity. Internal Rate of Return metrics are not fully representative without full disclosure of fund cash flows, assumptions, and time horizons. p

The Information does not constitute, and must not be relied upon as, investment advice, credit ratings, or proxy advisory or voting services. None of the Information Providers, their products or services, are fiduciaries or make any recommendation, endorsement, or approval of any investment decision or asset allocation. Likewise, the Information does not represent an offer to sell, a solicitation to buy, or an endorsement of any security, financial product, instrument, investment vehicle, or trading strategy, whether or not linked to or in any way based on any MSCI index, rating, subcomponent, or other Information (collectively, "Linked Investments"). The Information should not be relied on and is not a substitute for the skill, judgment and experience of any user when making investment and other business decisions. MSCI is not responsible for any user's compliance with applicable laws and regulations. All Information is impersonal, not tailored to the needs of any person, entity or group of persons, not objectively verifiable in every respect, and may not be based on information that is important to any user. c

It is not possible to invest in an index. Exposure to an asset class or trading strategy or other category represented by an index is only available through third party investable instruments (if any) based on that index. MSCI makes no assurance that any Linked Investments will accurately track index performance or provide positive investment returns. Index returns do not represent results of actual trading of investable assets/securities. MSCI maintains and calculates indexes but does not manage assets. The calculation of indexes and index returns may deviate from the stated methodology. Index returns do not reflect payment of any sales charges or fees an investor may pay to purchase securities underlying the index or Linked Investments. The imposition of these fees and charges would cause the performance of a Linked Investment to be different than the MSCI index performance. h

Information provided by MSCI Solutions LLC and certain related entities ("MSCI Solutions"), including materials utilized in MSCI sustainability and climate products, have not been submitted to, nor received approval from any regulatory body. MSCI sustainability and climate offerings, research and data are produced by, and ratings are solely the opinion of MSCI Solutions. Other MSCI products and services may utilize information from MSCI Solutions, Barra LLC or other affiliates. More information can be found in the relevant methodologies on www.msci.com. MSCI Indexes are administered by MSCI Limited (UK) and MSCI Deutschland GmbH. No regulated use of any MSCI private real assets indexes in any jurisdiction is permitted without MSCI's express written authorization. The process for applying for MSCI's express written authorization can be found at: <https://www.msci.com/index-regulation>.

MSCI receives compensation in connection with licensing its indexes and other Information to third parties. MSCI Inc.'s revenue includes fees based on assets in Linked Investments. Information can be found in MSCI Inc.'s company filings on the Investor Relations section of msci.com. Issuers mentioned in MSCI Solutions materials or their affiliates may purchase research or other products or services from one or more MSCI affiliates, manage financial products such as mutual funds or ETFs rated by MSCI Solutions or its affiliates or are based on MSCI Indexes. Constituents of MSCI equity indexes are listed companies, which are included in or excluded from the indexes according to the application of the relevant index methodologies. Constituents in MSCI Inc. equity indexes may include MSCI Inc., clients of MSCI or suppliers to MSCI. MSCI Solutions has taken steps to mitigate potential conflicts of interest and safeguard the integrity and independence of its research and ratings. o

MIFID2/MIFIR notice: MSCI Solutions does not distribute or act as an intermediary for financial instruments or structured deposits, nor does it deal on its own account, provide execution services for others or manage client accounts. No MSCI product or service supports, promotes or is intended to support or promote any such activity. MSCI Solutions is an independent provider of sustainability and climate data. All use of indicative prices for carbon credits must comply with any rules specified by MSCI. All transactions in carbon credits must be traded "over-the-counter" (i.e. not on a regulated market, trading venue or platform that performs a similar function to a trading venue) and result in physical delivery of the carbon credits. s

You may not remove, alter, or obscure any attribution to MSCI or notices or disclaimers that apply to the Information. MSCI, Barra, RiskMetrics, and other MSCI brands and product names are the trademarks, service marks, or registered trademarks of MSCI or its subsidiaries in the United States and other jurisdictions. The Global Industry Classification Standard (GICS) was developed by and is the exclusive property of MSCI and S&P Dow Jones Indices. "Global Industry Classification Standard (GICS)" is a service mark of MSCI and S&P Dow Jones Indices. Terms such as including, includes, for example, such as and similar terms used herein are without limitation. c

MSCI and its Information Providers may use automated technologies and artificial intelligence to help generate content and output incorporated in the Information.

Privacy notice: For information about how MSCI collects and uses personal data, please refer to our Privacy Notice at: <https://www.msci.com/privacy-pledge>. For copyright infringement claims contact us at dmca@msci.com. This notice is governed by the laws of the State of New York without regard to conflict of laws principles