

RiskMetrics® Wealthbench

Leverage powerful analytics, quality data and transparency for more informed management and better decisions.

RiskMetrics Wealthbench is a web based platform used by investment advisors to help them assess portfolio risk, construct asset allocation policy and create comprehensive client proposals. The highly configurable SaaS platform incorporates robust analytics, high quality market data, back-tested models and transparent methodologies to provide a feature rich environment for advisors to manage client wealth and financial risk.

Benefits and features

Risk transparency

Unlike typical wealth management applications, WealthBench provides institutional-quality risk analytics. It provides portfolio-level statistics from the security level up, based on current correlations among portfolio holdings.

A multi-period, simulation-based optimization methodology,

WealthBench's Multi-Period Optimization (MPO) develops allocations based on individual client characteristics including tax assumptions (US only), cash flows and goals as well as capital market assumptions and asset class constraints.

A consistent platform across the advisor base

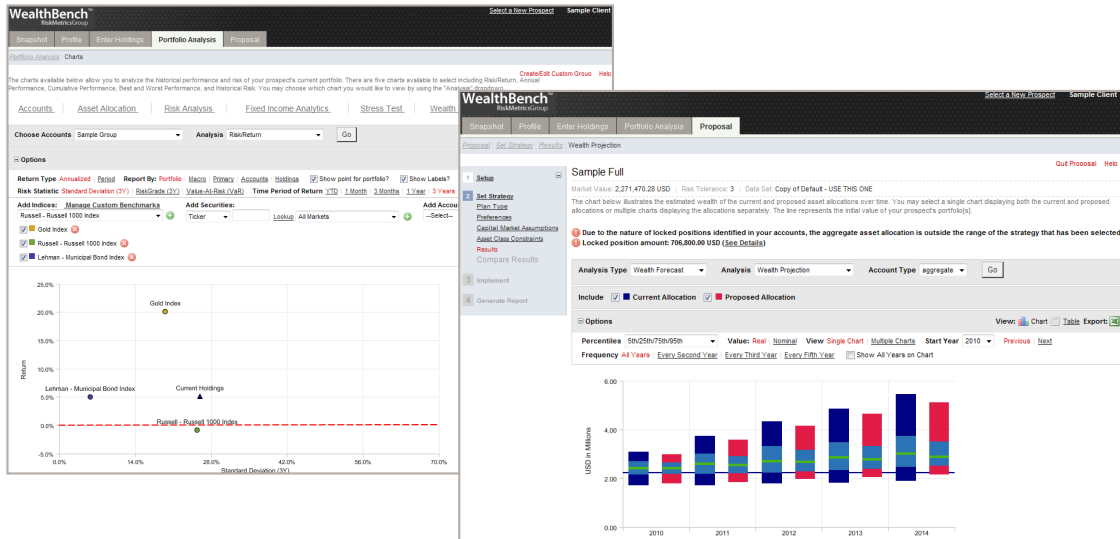
At the institutional level, WealthBench allows a firm to configure a custom, standardized interface across its advisor base. Firm configurable components include: asset class schema, incorporation of firm security master and client holding feeds, capital market assumptions, model allocations/portfolios and firm sponsored recommended lists. In addition to its configuration and integration features, WealthBench allows each firm to customize its own client proposals.

Technology and support

By integrating a firm's security master universe, asset classification schema, and model allocations into the WealthBench platform, advisors can focus on building better client relationships and spend less time inputting data. WealthBench's web-based Software as a Service (SaaS) application provides firms with 24x7 access and technical support. Adding services like Single Sign-On allows for a more cohesive user experience.

Client relationships

WealthBench can be used by firms to help them provide proactive, better informed advice to their clients, including reporting that is actionable, tailored to each client's specific risk tolerance, return objectives, and financial goals.

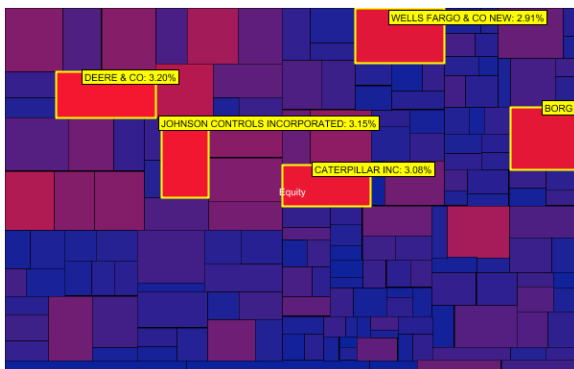


Risk management

Understanding risk is the first step to managing risk. WealthBench's sophisticated institutional-quality risk analysis allows advisors to better understand and manage risk in client portfolios. Using WealthBench, advisors can analyze multi-asset portfolios denominated in different currencies.

Risk analysis and stress testing

Advisors can conduct an exhaustive analysis of a client's current portfolio not only at the asset class level but also at the individual security/product level. Advisors can measure client risk in both normal and stressed market conditions. Advisors can easily analyze the benefits of portfolio diversification and the effect of making selected changes to a portfolio from a risk and return perspective.

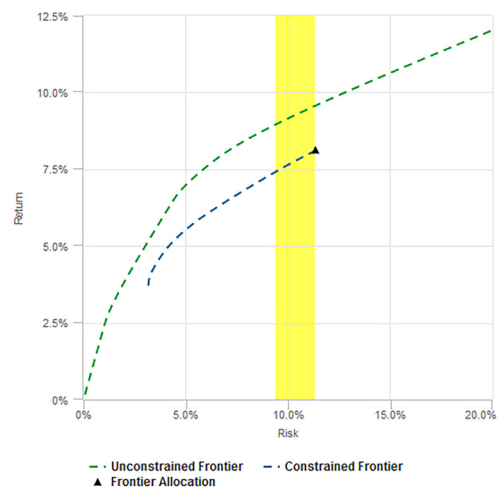


Position level risk transparency

Using WealthBench, advisors can illustrate which positions, asset classes, sectors, etc. contribute the most risk to a portfolio. Advisors can quantify risk contribution, down-side risk and diversification. Down-side risk measures allow advisors to discuss the potential losses a portfolio might experience.

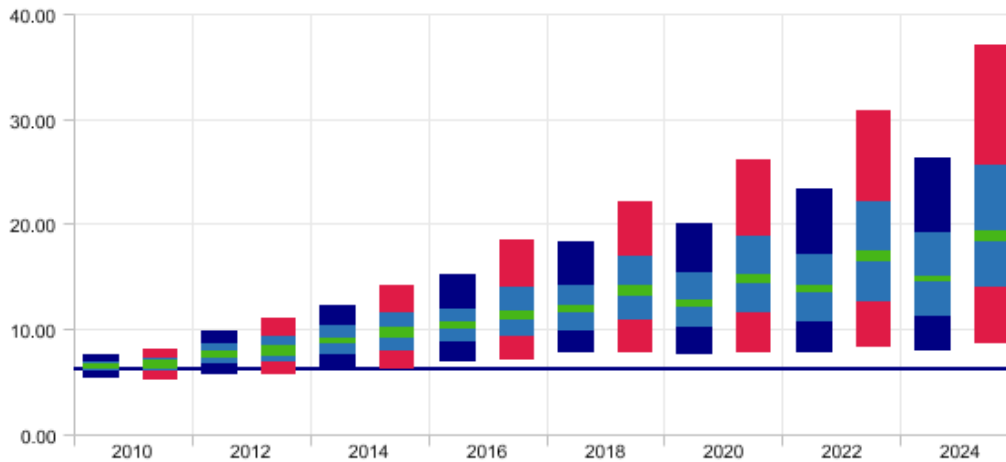
Asset allocation

At the center of the investment planning process is the selection and modeling of an appropriate asset allocation policy. WealthBench provides users with flexibility, allowing them to construct the most appropriate policy based on the client's specific profile (risk tolerance, constraints, cash flows, goals, etc).



Wealth simulation

Cash flow granular Monte Carlo wealth simulation allows advisors to illustrate possible future wealth values to clients, including the probability of meeting goals and the impact of concentrated holdings.



Reporting

WealthBench allows advisors to generate presentation-quality reports on current and proposed portfolio allocation, wealth projections, cash flows, risk analysis and a host of other analytical data. These professional reports are multilingual, extremely flexible and custom built to represent each firm's brand.

Goals-based planning

WealthBench Goal Analyzer powered by GoalMetrics, MSCI's latest research on asset allocation and goals-based investing, introduces a new dynamic asset allocation framework, that can help improve outcomes for investors, one that adapts to the changing funding needs over an investor's lifetime and to changes in economic scenarios. Traditional conversations about risk focus on market volatility. Goal Analyzer lets advisors focus instead on risk as long-term shortfall—the risk that a client will fail to meet their stated goals. Shortfall risk is generally easier for a client to understand or for an advisor to articulate.

About MSCI

MSCI is a leading provider of critical decision support tools and services for the global investment community. With over 45 years of expertise in research, data and technology, we power better investment decisions by enabling clients to understand and analyze key drivers of risk and return and confidently build more effective portfolios. We create industry-leading research-enhanced solutions that clients use to gain insight into and improve transparency across the investment process.

To learn more, please visit www.msci.com.

The information contained herein (the "Information") may not be reproduced or disseminated in whole or in part without prior written permission from MSCI. The Information may not be used to verify or correct other data, to create indexes, risk models, or analytics, or in connection with issuing, offering, sponsoring, managing or marketing any securities, portfolios, financial products or other investment vehicles. Historical data and analysis should not be taken as an indication or guarantee of any future performance, analysis, forecast or prediction. None of the Information or MSCI index or other product or service constitutes an offer to buy or sell, or a promotion or recommendation of, any security, financial instrument or product or trading strategy. Further, none of the Information or any MSCI index is intended to constitute investment advice or a recommendation to make (or refrain from making) any kind of investment decision and may not be relied on as such. The Information is provided "as is" and the user of the Information assumes the entire risk of any use it may make or permit to be made of the Information. NONE OF MSCI INC. OR ANY OF ITS SUBSIDIARIES OR ITS OR THEIR DIRECT OR INDIRECT SUPPLIERS OR ANY THIRD PARTY INVOLVED IN THE MAKING OR COMPILING OF THE INFORMATION (EACH, AN "MSCI PARTY") MAKES ANY WARRANTIES OR REPRESENTATIONS AND, TO THE MAXIMUM EXTENT PERMITTED BY LAW, EACH MSCI PARTY HEREBY EXPRESSLY DISCLAIMS ALL IMPLIED WARRANTIES, INCLUDING WARRANTIES OF MERCHANTABILITY AND FITNESS FOR A PARTICULAR PURPOSE. WITHOUT LIMITING ANY OF THE FOREGOING AND TO THE MAXIMUM EXTENT PERMITTED BY LAW, IN NO EVENT SHALL ANY OF THE MSCI PARTIES HAVE ANY LIABILITY REGARDING ANY OF THE INFORMATION FOR ANY DIRECT, INDIRECT, SPECIAL, PUNITIVE, CONSEQUENTIAL (INCLUDING LOST PROFITS) OR ANY OTHER DAMAGES EVEN IF NOTIFIED OF THE POSSIBILITY OF SUCH DAMAGES. The foregoing shall not exclude or limit any liability that may not by applicable law be excluded or limited.

©2019 MSCI Inc. All rights reserved | CFS0719