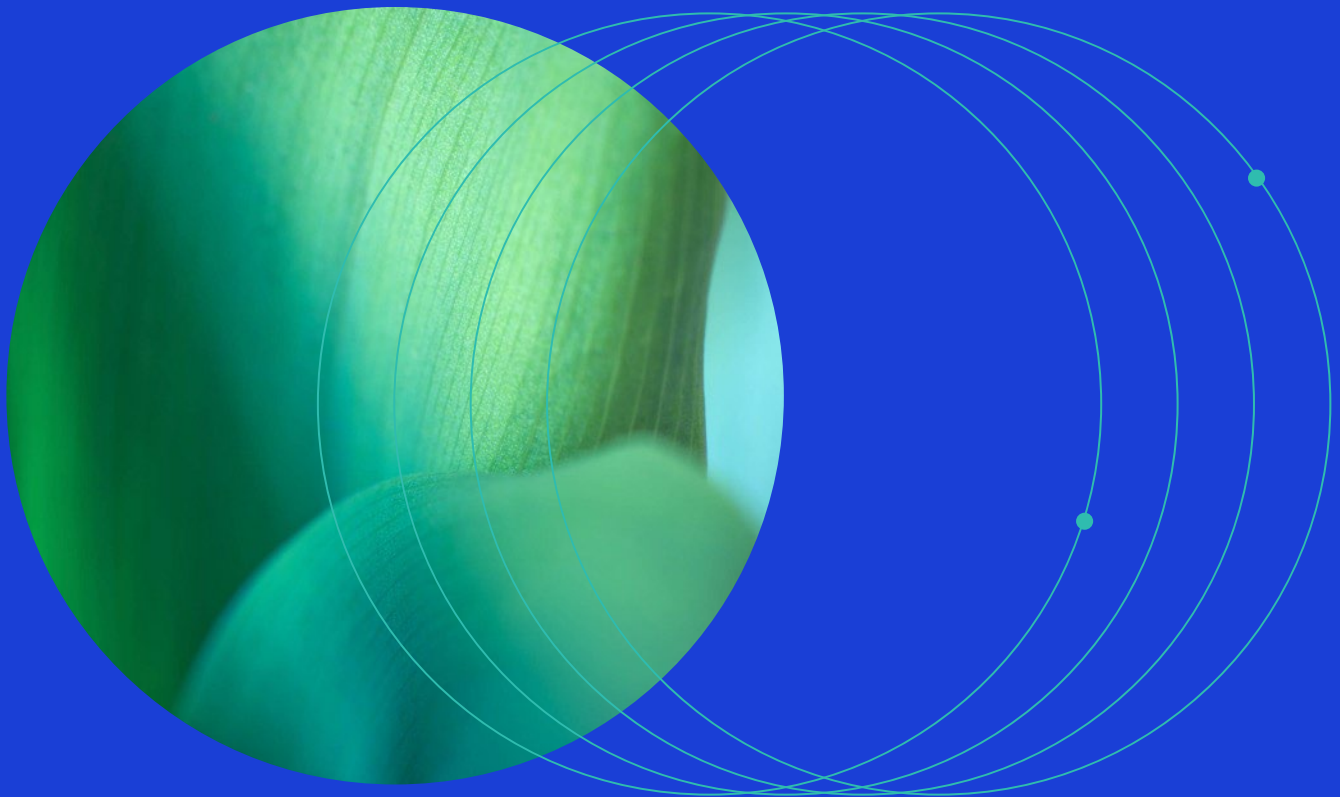




May 2026

# MSCI Government Bond Indexes (MGBI) Methodology



## Contents

1	<b>General Methodology Overview .....</b>	<b>3</b>
2	<b>Index Construction: General guidelines .....</b>	<b>4</b>
3	<b>Index Construction: MSCI Government Bond Index – Developed Market .....</b>	<b>5</b>
4	<b>Index Construction: Single currency MSCI Government Bond Indexes.....</b>	<b>7</b>
5	<b>Index Construction: MSCI All Maturities Government Bond Indexes .....</b>	<b>8</b>
6	<b>Sub-Indexes Based on Country, Maturity Buckets, Region, etc. ....</b>	<b>9</b>
7	<b>Index Rebalancing &amp; Maintenance .....</b>	<b>10</b>
	<b>Appendix I: Methodology Set .....</b>	<b>11</b>
	<b>Appendix II: Changes to the Methodology Book.....</b>	<b>12</b>

## 1 General Methodology Overview

The MSCI Government Bond Indexes<sup>1</sup> ('the Indexes') are constructed to measure the performance of eligible bonds issued by government-related entities in the global fixed income markets.

The MSCI Government Bond Indexes are rules based and conform to a general construction guideline as described in this methodology document.

The spirit of index design is to be representative of the market universe, as well as be replicable by global institutional investors. Broadly, the index methodology selects fix coupon, local currency, and investment grade bonds from the relevant issuers. The eligible bonds are further screened for maturity and size cut-offs as outlined in relevant sections of this methodology document.

---

<sup>1</sup> The Indexes are governed by a set of methodology and policy documents ("Methodology Set"), including the present index methodology document. The Methodology Set for the Indexes can be accessed from MSCI's webpage <https://www.msci.com/index-methodology> in the section 'Search Methodology by Index Name or Index Code'. The Methodology Set includes a document 'ESG Factors in Methodology' that contains the list of environmental, social, and governance factors considered, and how they are applied in the methodology (e.g., selection, weighting or exclusion).

## 2 Index Construction: General guidelines

**Security Type:** The MSCI Government Bond Indexes (herein ‘the Indexes’) include local currency bonds issued from government-related entities within the global fixed income universe. In general, the universe includes fixed rate coupon bonds.

**Credit Rating:** Each issuer of index constituents must be rated by either Fitch, S&P or Moody's. For bonds that are rated by two rating agencies, the lower rating will be used to determine the index inclusion criteria. For bonds that are rated by all three rating agencies, the median rating will be used to determine the index inclusion criteria.

Index constituents that are not rated at a bond level will be considered for index inclusion based on Fitch, S&P or Moody's issuer level long term credit rating.

**Maturity:** Each index constituent must have a maturity greater than or equal to 1 year as measured from the Rebalancing Date (defined below). New additions to the Indexes must have a maturity greater than or equal to 1 ½ years as measured from the Rebalancing Date.

**Weighting:** Index constituents will be weighed by market value<sup>2</sup> within the index.

**Pricing:** MSCI uses bid side pricing from its data vendors. Securities not priced by any of the designated pricing sources are ineligible for index inclusion.

**Settlement:** MSCI applies standard same-day (T+0) index settlement convention, unless otherwise specified.

---

<sup>2</sup> Please refer to MSCI Fixed Income Index calculation methodology at [www.msci.com/index-methodology](http://www.msci.com/index-methodology) for further details on security level market value calculation.

### 3 Index Construction: MSCI Government Bond Index – Developed Market

The MSCI Government Bond Index – Developed Markets (“MGBI-DM Index”; MSCI Index Code: 753530) is a multi-currency index that includes fixed-rate, local currency government bonds issued by Developed Market issuers. In addition, each eligible country must be rated Investment Grade, utilizing the median of the three ratings from Fitch, Moody’s and S&P.

The MGBI-DM Index construction follows general guidelines outlined in Section 2. In addition to those, the following rules are also applicable for the MGBI-DM Index construction.

**Eligible Countries for MGBI-DM Index inclusion:** The MGBI-DM Index includes countries that have the following assessments<sup>3</sup> as per the MSCI Fixed Income Market Classification Framework<sup>4</sup>

- Economic Development Assessment for the country must be Developed.
- Market Size as measured by total eligible debt stock must be greater than \$50 billion for inclusion in the index and the market must maintain a size of greater than \$25 billion to remain in the index.
- Market Accessibility rating should be “High” on all the seven parameters enlisted in the Fixed Income Market Accessibility Assessment section of the MSCI Fixed Income Market Classification Framework

List of countries eligible for inclusion within the MGBI-DM Index are noted in Table 1

**Table 1**

Countries eligible for inclusion in MGBI – DM Index		
Australia	Greece	Portugal
Austria	Ireland	Singapore
Belgium	Israel	Slovakia
Canada	Italy	Spain
Denmark	Japan	Sweden

<sup>3</sup> At an annual frequency.

<sup>4</sup> Please refer to the MSCI Fixed Income Market Classification Framework document for further details. Available at <https://www.msci.com/our-solutions/indexes/market-classification>.

Finland	Netherlands	Switzerland
France	New Zealand	UK
Germany	Norway	USA

**Size:** MSCI calibrates and determines size-based index inclusion criteria to balance representativeness and liquidity for each currency within the index.

At a security level, size is determined by its current outstanding amount. At rebalancing, each security included in the MGBI-DM Index will have size greater than or equal to the thresholds tabulated in Table 2.

**Table 2**

Currency	Security Size Threshold
USD	2 billion
EUR	2 billion
GBP	2 billion
CAD	2 billion
SGD	2 billion
AUD	2 billion
CHF	2 billion
NZD	2 billion
ILS	5 billion
DKK	20 billion
NOK	20 billion
SEK	20 billion
JPY	300 billion

## 4 Index Construction: Single currency MSCI Government Bond Indexes

MSCI Government Bond Indexes are constructed to measure the performance of eligible bonds issued by government-related entities in the global fixed income markets.

The index construction for the single currency MSCI Government Bond indexes (“the Single Currency Indexes”) follows the general guidelines outlined in Section 2.

Similar to the broader based index criteria, the Single Currency Indexes will screen for bond outstanding amount. At rebalancing, each security included in the following Single Currency Indexes will have size greater than or equal to the thresholds tabulated in Table 3 below.

**Table 3**

Index	Security Size Threshold
MSCI U.S. Government Bond Index (746078)	USD 2 billion
MSCI Eurozone Government Bond Index <sup>5</sup> (746079)	EUR 2 billion
MSCI UK Government Bond Index (746080)	GBP 2 billion
MSCI Canada Government Bond Index (746082)	CAD 2 billion
MSCI Canada Province & Municipal Bond Index (746939)	CAD 150 million
MSCI Japan Government Bond Index (758381)	JPY 300 billion
MSCI Australia Government Bond Index (758880)	AUD 2 billion

<sup>5</sup> Countries included in the MSCI Eurozone Government Bond Index are Austria, Belgium, Finland, France, Germany, Greece, Ireland, Italy, Netherlands, Portugal, Slovakia and Spain.

## 5 Index Construction: MSCI All Maturities Government Bond Indexes

The MSCI All Maturities Government Bond Indexes are constructed to broaden the maturity scope of the indexes described in Sections 3 and 4.

For each index referenced in Sections 3 and 4, an 'All Maturities' version is constructed by relaxing the time to maturity screen as defined below –

**All Maturity Screen:** Each index constituent (new additions included) must have a maturity greater than or equal to 1 month as measured from the Rebalancing Date.

The MSCI All Maturities Government Bond Indexes are tabulated below –

**Table 4**

MSCI Index Code	Index Name
763744	MSCI UK All Maturities Government Bond Index

## 6 Sub-Indexes Based on Country, Maturity Buckets, Region, etc.

In addition to the standard MSCI Government Bond Indexes described in this document, MSCI also provides a range of sub-indexes derived from these parent indexes to offer more granular insight and benchmarking capabilities. These sub-indexes are derived systematically from the main indexes and can be segmented across multiple dimensions (individually or in combination). Key dimensions include, but are not limited to, the following:

### Country-Specific Sub-Indexes

These sub-indexes focus on the performance of eligible government bonds issued by a specific country that is included in the parent MSCI Government Bond Index. This allows investors to assess and monitor sovereign bond performance at an individual country level.

### Time to Maturity Buckets

To facilitate duration-based analysis and portfolio segmentation, MSCI also maintains sub-indexes categorized by time to maturity. Common maturity buckets include, but are not limited to:

- 1 month – 1 year
- 1–3 years
- 3–5 years
- 5–7 years
- 7–10 years
- 10–20 years
- 20+ years

These sub-indexes follow the same general eligibility and construction principles as the MSCI Government Bond Indexes with the underlying universe filtered according to the selected dimension(s). In practice, MSCI can generate sub-indexes along any single dimension or across combinations such as maturity-by-country, rating-by-region, country-by-currency, or broader multi-dimensional frameworks to support a wide range of analytical and benchmarking needs.

## 7 Index Rebalancing & Maintenance

- The composition of the MSCI Government Bond Index is reviewed monthly, with an effective rebalancing impact of the first business day of the month. For clarification, bonds are added to the index on the closing of last business day of every month, however, the return impact is on the first business day of the month.
- Change in the Index composition is based on latest data available three days prior to the Rebalancing Date, which is defined as the Cut-Off Date. Any inclusion or exclusion criteria satisfied for a given security in the universe, after the Cut-Off Date, will generally become effective at the following monthly rebalancing; should conditions remain unchanged. In exceptional cases, for instance, cases of input data correction, MSCI can reduce the Cut-Off Date for Index rebalancing from T-3 to T-2, T-1, or T. In such instances, MSCI will notify Index clients of such changes via announcement.
- MSCI will disclose proforma index rebalancing results starting the second business day of each month. MSCI will freeze the proforma index rebalancing results as of the Cut-Off Date.
- Bonds are either added to or removed from the index solely on monthly rebalancing dates. For existing index components, any changes to index eligibility will only be reflected in the subsequent monthly rebalancing.
- Any cash that accrues within the index in each month is re-invested on a pro-rata basis across the index constituents, on the Rebalancing Date. In essence, cash in the index is swept out on rebalancing and the opening index portfolio on the Rebalancing Date starts with zero accrued cash balance.
- Specific variants of total return calculation of the index on the Rebalancing Date may be adjusted for transaction costs<sup>6</sup> as securities are added to the index at the offer price.

For further information on index total return calculation and corporate events handling please refer to the MSCI Fixed Income Index Calculation Methodology<sup>7</sup>.

For the holiday calendar used in the indexes, please refer to the MSCI Fixed Income Data Methodology<sup>8</sup>.

<sup>6</sup> Refer to the MSCI Fixed Income Index Calculation Methodology for detail. Available at <https://www.msci.com/index-methodology>

<sup>7</sup> Refer to the MSCI Fixed Income Index Calculation Methodology for detail. Available at <https://www.msci.com/index-methodology>

<sup>8</sup> The methodologies are available at: <https://www.msci.com/index-methodology>.

## Appendix I: Methodology Set

The Indexes are governed by a set of methodology and policy documents (“Methodology Set”), including the present index methodology document as mentioned below:

- Description of methodology set – <https://www.msci.com/index/methodology/latest/FIInfo>
- MSCI Fixed Income Data Methodology – <https://www.msci.com/index/methodology/latest/FIDATA>
- MSCI Fixed Income Calculation Methodology – <https://www.msci.com/index/methodology/latest/FIINDEXCALC>
- MSCI Fixed Income Glossary of Terms – <https://www.msci.com/index/methodology/latest/FIGLOSS>
- MSCI Fixed Income Index Policies – <https://www.msci.com/index/methodology/latest/FIINDEXPOLICY>
- MSCI Government Bond Indexes Methodology – <https://www.msci.com/index/methodology/latest/FIGOV>

The Methodology Set for the Indexes can also be accessed from MSCI’s webpage <https://www.msci.com/index-methodology> in the section ‘Search Methodology by Index Name or Index Code’.

## Appendix II: Changes to the Methodology Book

### The following sections have been modified since May 2023:

Added Section 3 - Index Construction: MSCI Government Bond Index – Developed Markets  
 Added Appendix: Fixed Income Market Classification Framework

### The following sections have been modified since October 2023:

Updated Footnote 2 to reference the MSCI Market Classification Framework document.  
 Removed Appendix: Fixed Income Market Classification Framework.

### The following sections have been modified since December 2023:

Clarified treatment of Cut Off Date for exceptional cases in Section 3

### The following sections have been modified since December 2023:

Appendix I: Methodology Set

- Added details on the Methodology Set for the Index

### The following sections have been modified since April 2025:

Updated section 2 and 3 to reflect the integration of Fitch Credit Ratings in the index construction methodology of the MSCI Government Bond Indexes

### The following sections have been modified as of June 2025:

- Updated branding template.
- Added Section 6 on availability of sub-indexes based on Country and Time to Maturity Buckets.

### The following sections have been modified as of December 2025:

- Amended language in Section 6 to clarify that a Government Bond sub-index can be constructed by slicing and dicing based on customized combinations of multiple key dimensions like credit rating, country, currency, region, time to maturity etc.

**The following sections have been modified as of May 2026:**

- Added a section to incorporate the index construction of MSCI All Maturities Government Bond Indexes.

## Contact Us

### About MSCI

MSCI is a leading provider of critical decision support tools and services for the global investment community. With over 50 years of expertise in research, data and technology, we power better investment decisions by enabling clients to understand and analyze key drivers of risk and return and confidently build more effective portfolios. We create industry-leading research-enhanced solutions that clients use to gain insight into and improve transparency across the investment process.

To learn more, please visit [www.msci.com](http://www.msci.com).  
[msci.com/contact-us](http://msci.com/contact-us)

The process for submitting a formal index complaint can be found on the index regulation page of MSCI's website at: <https://www.msci.com/index-regulation>.

### AMERICA

United States	+ 1 888 588 4567 *
Canada	+ 1 416 687 6270
Brazil	+ 55 11 4040 7830
Mexico	+ 52 81 1253 4020

### EUROPE, MIDDLE EAST & AFRICA

South Africa	+ 27 21 673 0103
Germany	+ 49 69 133 859 00
Switzerland	+ 41 22 817 9777
United Kingdom	+ 44 20 7618 2222
Italy	+ 39 02 5849 0415
France	+ 33 17 6769 810

### EUROPE, MIDDLE EAST & AFRICA

China	+ 86 21 61326611
Hong Kong	+ 852 2844 9333
India	+ 91 22 6784 9160
Malaysia	1800818185 *
South Korea	+ 82 70 4769 4231
Singapore	+ 65 67011177
Australia	+ 612 9033 9333
Taiwan	008 0112 7513 *
Thailand	0018 0015 6207 7181 *
Japan	+ 81 3 4579 0333

\* toll-free

## Notice and Disclaimer

The data, data feeds, databases, reports, text, graphs, charts, images, videos, recordings, models, metrics, analytics, indexes, ratings, scores, cases, estimates, assessments, software, websites, products, services and other information and materials contained herein or delivered in connection with this notice (collectively, the "Information") are copyrighted, trade secrets (when not publicly available), trademarks and proprietary property of MSCI Inc. or its subsidiaries (collectively, "MSCI"), MSCI's licensors, direct or indirect suppliers and authorized sources, and/or any third party contributing to the Information (collectively, with MSCI, the "Information Providers"). All rights in the Information are reserved by MSCI and its Information Providers and user(s) shall not, nor assist others to, challenge or assert any rights in the Information.

Unless you contact MSCI and receive its prior written permission, you must NOT use the Information, directly or indirectly, in whole or in part (i) for commercial purposes, (ii) in a manner that competes with MSCI or impacts its ability to commercialize the Information or its services, (iii) to provide a service to a third party, (iv) to permit a third party to directly or indirectly access, use or resell the Information, (v) to redistribute or resell the Information in any form, (vi) to include the Information in any materials for public dissemination such as fund factsheets, market presentations, prospectuses, and investor information documents (e.g. KIDs or KIDS), (vii) to create or as a component of any financial products, whether listed or traded over the counter or on a private placement basis or otherwise, (viii) to create any indexes, ratings or other data products, including in derivative works combined with other indexes or data or as a policy, product or performance benchmarks for active, passive or other financial products, (ix) to populate a database, or (x) to train, use as an input to, or otherwise in connection with any artificial intelligence, machine learning, large language models or similar technologies except as licensed and expressly authorized under MSCI's AI Contracting Supplement at <https://www.msci.com/legal/supplemental-terms-for-client-use-of-artificial-intelligence>.

The intellectual property rights of MSCI and its Information Providers may not be misappropriated or used in a competitive manner through the use of third-party data or financial products linked to the Information, including by using an MSCI index-linked future or option in a competing third-party index to provide an exposure to the underlying MSCI index or by using an MSCI index-linked ETF to create a financial product that provides an exposure to the underlying MSCI index without obtaining a license from MSCI.

The user or recipient of the Information assumes the entire risk of any use it may make, permit or cause to be made of the Information. NONE OF THE INFORMATION PROVIDERS MAKES ANY EXPRESS OR IMPLIED WARRANTIES OR REPRESENTATIONS WITH RESPECT TO THE INFORMATION (OR THE RESULTS TO BE OBTAINED BY THE USE THEREOF), AND TO THE MAXIMUM EXTENT PERMITTED BY APPLICABLE LAW, EACH INFORMATION PROVIDER EXPRESSLY DISCLAIMS ALL IMPLIED WARRANTIES (INCLUDING ANY IMPLIED WARRANTIES OF ORIGINALITY, ACCURACY, TIMELINESS, SUITABILITY, NON-INFRINGEMENT, COMPLETENESS, MERCHANTABILITY AND FITNESS FOR A PARTICULAR PURPOSE) WITH RESPECT TO ANY OF THE INFORMATION. Without limiting any of the foregoing and to the maximum extent permitted by applicable law, in no event shall MSCI or any other Information Provider have any liability arising out of or relating to any of the Information, including for any direct, indirect, special, punitive, consequential (including lost profits) or any other damages, even if notified of the possibility of such damages. The foregoing shall not exclude or limit any liability that may not be applicable law be excluded or limited.

The Information, including index construction, ratings, historical data, or analysis, is not a prediction or guarantee of future performance, and must not be relied upon as such. Past performance is not indicative of future results. The Information may contain back tested data. Back-tested performance based on back-tested data is not actual performance but is hypothetical. There are frequently material differences between back tested performance results and actual results subsequently achieved by any investment strategy. The Information may include "Signals," defined as quantitative attributes or the product of methods or formulas that describe or are derived from calculations using historical data. Signals are inherently backward-looking because of their use of historical data, and they are inherently inaccurate, not intended to predict the future and must not be relied upon as such. The relevance, correlations and accuracy of Signals frequently change materially over time.

The Information may include data relating to indicative prices, evaluated pricing or other information based on estimates or evaluations (collectively, "Evaluations") that are not current and do not reflect real-time traded prices. No evaluation method, including those used by the Information Providers, may consistently generate evaluations or estimates that correspond to actual "traded" prices of any relevant securities or other assets. Evaluations are subject to change at any time without notice and without any duty to update or inform you, may not reflect prices at which actual transactions or collateral calls may occur or have occurred. The market price of securities, financial instruments, and other assets can be determined only if and when executed in the market. There may be no, or may not have been any, secondary trading market for the relevant securities, financial instruments or other assets. Private capital, equity, credit and other assets and their prices may be assessed infrequently, may not be priced on a secondary market, and shall not be relied upon as an explicit or implicit valuation of a particular instrument. Any reliance on fair value estimates and non-market inputs introduces potential biases and subjectivity. Internal Rate of Return metrics are not fully representative without full disclosure of fund cash flows, assumptions, and time horizons.

The Information does not constitute, and must not be relied upon as, investment advice, credit ratings, or proxy advisory or voting services. None of the Information Providers, their products or services, are fiduciaries or make any recommendation, endorsement, or approval of any investment decision or asset allocation. Likewise, the Information does not represent an offer to sell, a solicitation to buy, or an endorsement of any security, financial product, instrument, investment vehicle, or trading strategy, whether or not linked to or in any way based on any MSCI index, rating, subcomponent, or other Information (collectively, "Linked Investments"). The Information should not be relied on and is not a substitute for the skill, judgment and experience of any user when making investment and other business decisions. MSCI is not responsible for any user's compliance with applicable laws and regulations. All Information is impersonal, not tailored to the needs of any person, entity or group of persons, not objectively verifiable in every respect, and may not be based on information that is important to any user.

It is not possible to invest in an index. Exposure to an asset class or trading strategy or other category represented by an index is only available through third party investable instruments (if any) based on that index. MSCI makes no assurance that any Linked Investments will accurately track index performance or provide positive investment returns. Index returns do not represent results of actual trading of investible assets/securities. MSCI maintains and calculates indexes but does not manage assets. The calculation of indexes and index returns may deviate from the stated methodology. Index returns do not reflect payment of any sales charges or fees an investor may pay to purchase securities underlying the index or Linked Investments. The imposition of these fees and charges would cause the performance of a Linked Investment to be different than the MSCI index performance.

Information provided by MSCI Solutions LLC and certain related entities ("MSCI Solutions"), including materials utilized in MSCI sustainability and climate products, have not been submitted to, nor received approval from any regulatory body. MSCI sustainability and climate offerings, research and data are produced by, and ratings are solely the opinion of MSCI Solutions. MSCI India Domestic ESG Ratings are produced by MSCI ESG Ratings and Research Private Limited and offered domestically in India. Other MSCI products and services may utilize information from MSCI Solutions, Barra LLC or other affiliates. More information can be found in the relevant methodologies on [www.msci.com](http://www.msci.com). MSCI Indexes are administered by MSCI Limited (UK) and MSCI Deutschland GmbH. No regulated use of any MSCI private real assets indexes in any jurisdiction is permitted without MSCI's express written authorization. The process for applying for MSCI's express written authorization can be found at: <https://www.msci.com/index-regulation>.

MSCI receives compensation in connection with licensing its indexes and other Information to third parties. MSCI Inc.'s revenue includes fees based on assets in Linked Investments. Information can be found in MSCI Inc.'s company filings on the Investor Relations section of [msci.com](http://msci.com). Issuers mentioned in MSCI Solutions materials or their affiliates may purchase research or other products or services from one or more MSCI affiliates, manage financial products such as mutual funds or ETFs rated by MSCI Solutions or its affiliates or are based on MSCI Indexes. Constituents of MSCI equity indexes are listed companies, which are included in or excluded from the indexes according to the application of the relevant index methodologies. Constituents in MSCI Inc. equity indexes may include MSCI Inc., clients of MSCI or suppliers to MSCI. MSCI Solutions has taken steps to mitigate potential conflicts of interest and safeguard the integrity and independence of its research and ratings.

MIFID2/MIFIR notice: MSCI Solutions does not distribute or act as an intermediary for financial instruments or structured deposits, nor does it deal on its own account, provide execution services for others or manage client accounts. No MSCI product or service supports, promotes or is intended to support or promote any such activity. MSCI Solutions is an independent provider of sustainability and climate data. All use of indicative prices for carbon credits must comply with any rules specified by MSCI. All transactions in carbon credits must be traded "over-the-counter" (i.e. not on a regulated market, trading venue or platform that performs a similar function to a trading venue) and result in physical delivery of the carbon credits.

You may not remove, alter, or obscure any attribution to MSCI or notices or disclaimers that apply to the Information. MSCI, Barra, RiskMetrics, and other MSCI brands and product names are the trademarks, service marks, or registered trademarks of MSCI or its subsidiaries in the United States and other jurisdictions. The Global Industry Classification Standard (GICS) was developed by and is the exclusive property of MSCI and S&P Dow Jones Indices. "Global Industry Classification Standard (GICS)" is a service mark of MSCI and S&P Dow Jones Indices. Terms such as including, includes, for example, such as and similar terms used herein are without limitation.

MSCI and its Information Providers may use automated technologies and artificial intelligence to help generate content and output incorporated in the Information.

Privacy notice: For information about how MSCI collects and uses personal data, please refer to our Privacy Notice at: <https://www.msci.com/privacy-pledge>. For copyright infringement claims contact us at [dmca@msci.com](mailto:dmca@msci.com). This notice is governed by the laws of the State of New York without regard to conflict of laws principles.